

# **Mobile Elevating Work Platforms**

Scissors, Verticals, Stock Pickers & Low Level Access

# R SERIES

## R1932/R2632/R2646/R3246 Scissor Lifts

	<b>R1932</b>	<b>R2632</b>	<b>R2646</b>	<b>R3246</b>
Platform Height (Indoor)	19-ft / 5.8-m	25-ft 5-in / 7.8-m	26-ft / 7.92-m	32-ft / 9.8-m
Platform Height (Outdoor)	19-ft / 5.8-m	21-ft / 6.4-m	26-ft / 7.92-m	32-ft / 9.75-m
Platform Height - Lowered	38.6-in / .981-m	43.6-in / 1.11-m	45-in / 1.14-m	50.9-in / 1.29-m
No. Occupants (Indoor)	2	2	2	2
No. Occupants (Outdoor)	1	1	1	1
Platform Railing Height	43.3-in / 1.10-m	44.6-in / 1.13-m	44.6-in / 1.13-m	44.6-in / 1.13-m
Overall Height	82.8-in / 2.10-m	88.2-in / 2.24-m	89.6-in / 2.28-m	96.3-in / 2.45-m
— With Rails Folded	64.3-in / 1.63-m	70.3-in / 1.79-m	71.7-in / 1.82-m	77.6-in / 1.97-m
Platform Dimensions <sup>1</sup>	65.5 x 30.3-in / 1.66 x .77-m	87.6 x 27.7-in / 2.22 x .70-m	87.6 x 41.5-in / 2.22 x 1.05-m	87.6 x 41.5-in / 2.22 x 1.05-m
— Platform Extension	36-in / 91-cm	34-in / 86.5-cm	36-in / 91-cm	36-in / 91-cm
Overall Machine Length	68.7-in / 1.74-m	94.3-in / 2.40-m	94.3-in / 2.4-m	94.3-in / 2.40-m
Overall Machine Width	32-in / 81-cm	32-in / 81-cm	46-in / 117-cm	46-in / 117-cm
Wheelbase	53-in / 1.34-m	74-in / 1.88-m	74-in / 1.88-m	74-in / 1.88-m
Ground Clearance	2.8-in / 7-cm	3.9-in / 9.8-cm	3.9-in / 9.8-cm	3.9-in / 9.8-cm
Platform Capacity (Indoor)	507-lb / 230-kg	507-lb / 230-kg	1,200-lb / 545-kg	705-lb / 320-kg
Platform Capacity (Outdoor)	507-lb / 230-kg	275-lb / 125-kg	1,200-lb / 545-kg	507-lb / 230-kg
— Capacity on Deck Extension	265-lb / 120-kg	265-lb / 120-kg	265-lb / 120-kg	265-lb / 120-kg
Lift/Lower Time (No Load)	20/27 seconds	33/36 seconds	47/44 seconds	42/44 seconds
Lift/Lower Time (Rated Load)	25/26 seconds	39/29 seconds	54/37 seconds	50/37 seconds
Maximum Drive Height (Indoor)	Full Height	Full Height	Full Height	Full Height
Maximum Drive Height (Outdoor)	Full Height	21-ft / 6.4-m	Full Height	Full Height
Weight*	3,450-lb / 1,564-kg	4,280-lb / 1,941-kg	5,267-lb / 2,389-kg	5,410-lb / 2,454-kg
Ground Bearing Pressure	114 psi / 8.0-kg/cm <sup>2</sup>	92 psi / 6.5-kg/cm <sup>2</sup>	122 psi / 8.6-kg/cm <sup>2</sup>	131 psi / 9.21-kg/cm <sup>2</sup>
Drive Speed—Lowered	2.1 mph / 3.4 km/h	2.2 mph / 3.5 km/h	3 mph / 4.8 km/h	2.2 mph / 3.5 km/h
Drive Speed—Elevated	0.5 mph / 0.8 km/h	0.5 mph / 0.8 km/h	0.5 mph / 0.8 km/h	0.5 mph / 0.8 km/h
Max Tilt Rating				
— Indoor (Side to Side)	1.75 Degrees	1.50 Degrees	2.50 Degrees	2.50 Degrees
— Outdoor (Side to Side)	1.50 Degrees	1.50 Degrees	1.50 Degrees	1.50 Degrees
Fore and Aft	3.75 Degrees	3.50 Degrees	3.50 Degrees	3.50 Degrees
Gradeability	25%	25%	25%	25%
Turning Radius (Inside)	Zero	Zero	Zero	Zero
Turning Radius (Outside)	66-in / 1.68-m	88.2-in / 2.24-m	88-in / 2.24-m	88-in / 2.24-m
Max Wind Speed Rating	28 mph / 12.5 m/s	28 mph / 12.5 m/s	28 mph / 12.5 m/s	28 mph / 12.5 m/s
Tire Size - Non-Marking Solid	12.7 x 4-in / 323 x 100-mm	16 x 5-in / 406 x 127-mm	16 x 5-in / 406 x 125 mm	16 x 5-in / 406 x 127-mm
Batteries	4 x 6V 220 amp-hr	4 x 6V 220 amp-hr	4 x 6V 220 amp-hr	4 x 6V 220 amp-hr
Charger	27 amp	27 amp	27 amp	27 amp
Pump	Fixed Displacement Gear	Fixed Displacement Gear	Fixed Displacement Gear	Fixed Displacement Gear
Hydraulic Reservoir	4 gal / 15 L	4.8 gal / 18 L	4 gal / 15 L	4 gal / 15 L
Brakes (On Drive Wheels)	Multi-Disc Friction	Multi-Disc Friction	Multi-Disc Friction	Multi-Disc Friction
Rail Type	Fold-Down	Fold-Down	Fold-Down	Fold-Down
Drive	Hydraulic Front Wheel	Hydraulic Front Wheel	Hydraulic Front Wheel	Hydraulic Front Wheel

\*Certain weights and dimensions may vary due to options and to compliance with country standards. Specifications may change to meet country standards or with addition of optional equipment.

R1932i Indoor-only model available, consult factory

1. Dimensions reflect outside measurements.

# LIGHTWEIGHT ES SERIES

## ES1330L / ES1530L Scissor Lifts

	<b>ES1330L</b>	<b>ES1530L</b>
Platform Height—Elevated (Indoor)	13-ft / 3.8-m	15-ft / 4.5-m
Platform Height - Elevated (Outdoor)	13-ft / 3.8-m	10-ft / 3-m
Platform Height—Lowered	28.0-in / 70-cm	31.1-in / 80-cm
Platform Capacity	500-lb / 227-kg	500-lb / 227-kg
—Capacity on Deck Extension	250-lb / 115-kg	250-lb / 115-kg
No. Occupants (Indoor)	2	1
No. Occupants (Outdoor)	1	1
Platform Railing Height	43.3-in / 1.1-m	43.3-in / 1.1-m
Overall Height	71.7-in / 1.8-m	74.8-in / 1.9-m
Platform Dimensions <sup>1</sup>	52.8 x 27.6-in / 1.34 x .70-m	52.8 x 27.6-in / 1.34 x .70-m
—Platform Extension	21.6-in / 55-cm	21.6-in / 55-cm
Overall Machine Length	56.2-in / 1.4-m	56.2-in / 1.4-m
Overall Machine Width	30-in / 76-cm	30-in / 76-cm
Wheelbase	42.3-in / 1.1-m	42.3-in / 1.1-m
Ground Clearance	2.4-in / 6-cm	2.4-in / 6-cm
Lift/Lower Time (No Load)	17/17 seconds	19/19 seconds
Lift/Lower Time (Rated Load)	20/16 seconds	22/17 seconds
Maximum Drive Height (Indoor)	13-ft / 3.8-m	15-ft / 4.5-m
Maximum Drive Height (Outdoor)	13-ft / 3.8-m	10-ft / 4.5-m
Weight*	1,984-lb / 900-kg	1,940-lb / 880-kg
Ground Bearing Pressure	119 psi / 8.3-kg/cm <sup>2</sup>	126 psi / 8.82-kg/cm <sup>2</sup>
Drive Speed—Lowered	2.4 mph / 3.8 km/h	2.4 mph / 3.8 km/h
Drive Speed—Elevated	0.5 mph / .8 km/h	0.5 mph / .8 km/h
Max Tilt Rating		
— Indoor (side to side)	1.75 Degrees	2.5 Degrees
— Outdoor (side to side)	1.50 Degrees	1.50 Degrees
Fore and Aft	3 Degrees	3 Degrees
Gradeability	25%	25%
Turning Radius (Inside)	Zero	Zero
Turning Radius (Outside)	55-in / 1.4-m	55-in / 1.4-m
Max Wind Speed Rating	28 mph / 12.5 m/s	28 mph / 12.5 m/s
Tire Size (Non-Marking Solid)	10 x 3-in / 255 x 75-mm	10 x 3-in / 255 x 75-mm
Batteries	2 x 12V 105 amp-hr	2 x 12V 105 amp-hr
Charger	27 Amp	27 Amp
Pump	Fixed Displacement Gear	Fixed Displacement Gear
Hydraulic Reservoir	1.3 gal / 5 L	1.3 gal / 5 L
Brakes (On Drive Wheels)	Electric, Friction	Electric, Friction
Rail Type	Fixed	Fixed
Drive	24V DC	24V DC

\*Certain weights and dimensions may vary due to options and to compliance with country standards. Specifications may change to meet country standards or with addition of optional equipment.

1. Dimensions reflect outside measurements.

# ES SERIES

## ES1932/ES2632/ES2646/ES3246/ES4046 Scissor Lifts

	<b>ES1932</b>	<b>ES2632</b>	<b>ES2646</b>	<b>ES3246</b>	<b>ES4046</b>
Platform Height—Elevated (Indoor)	19-ft / 5.8-m	25-ft 5-in / 7.8-m	26-ft / 7.92-m	32-ft / 9.8-m	39.1-ft / 11.9-m
Platform Height—Elevated (Outdoor)	19-ft / 5.8-m	21-ft / 6.4-m	26-ft / 7.92-m	32-ft / 9.8-m	28-ft 8.5-in / 8.75-m
Platform Height—Lowered	38.6-in / 981-m	43.6-in / 1.11-m	45.0-in / 1.14-m	50.9-in / 1.29-m	54.8-in / 1.4-m
Platform Capacity (Indoor)	507-lb / 230-kg	507-lb / 230-kg	1,200-lb / 545-kg	705-lb / 320-kg	770-lb / 349.3-kg
Platform Capacity (Outdoor)	507-lb / 230-kg	275-lb / 125-kg	1,200-lb / 545-kg	507-lb / 230-kg	550-lb / 249.5-kg
—Capacity on Deck Extension	265-lb / 120-kg	265-lb / 120-kg	265-lb / 120-kg	265-lb / 120-kg	250-lb / 113.4-kg
No. Occupants (Indoor)	2	2	2	2	3
No. Occupants (Outdoor)	1	1	1	1	1
Platform Railing Height	44.6-in / 1.13-m	44.6-in / 1.13-m	44.6-in / 1.13-m	44.6-in / 1.13-m	44.6-in / 1.13-m
Overall Height	82.8-in / 2.10-m	88.2-in / 2.24-m	89.6-in / 2.28-m	96.3-in / 2.45-m	99.5-in / 2.53-m
—With Rails Folded	78.2-in / 1.99-m	70.3-in / 1.8-m	71.7-in / 1.82-m	77.6-in / 1.97-m	78.5-in / 1.99-m
Platform Dimensions <sup>1</sup>	62.7 x 25.4-in / 1.59 x .64-m	87.6 x 27.7-in / 2.22 x .70-m	87.6 x 41.5-in / 2.22 x 1.05-m	87.6 x 41.5-in / 2.22 x 1.05-m	97.1 x 37.4-in / 2.47 x 0.95-m
—Platform Extension	36-in / 91-cm	34-in / 86.5-cm	36-in / 91-cm	36-in / 91-cm	36-in / 91.4-cm
Overall-machine Length	68.7-in / 1.74-m	94.3-in / 2.4-m	94.3-in / 2.4-m	94.3-in / 2.4-m	106.6-in / 2.7-m
Overall-machine Width	32-in / 81-cm	32-in / 81-cm	46-in / 117-cm	46-in / 117-cm	46-in / 117-cm
Wheelbase	53-in / 1.34-m	74-in / 1.88-m	74-in / 1.88-m	74-in / 1.88-m	80.4-in / 2.04-m
Ground Clearance	2.8-in / 7-cm	3.9-in / 9.8-cm	3.9-in / 9.8-cm	3.9-in / 9.8-cm	4.8-in / 12.19-cm
Lift/Lower Time (No Load)	22/29 seconds	38/40 seconds	49/44 seconds	51/48 seconds	66/52 Seconds
Lift/Lower Time (Rated Load)	27/28 seconds	46/34 seconds	62/37 seconds	54/41 seconds	76/42 seconds
Maximum Drive Height (Indoor)	19-ft / 5.79-m	Full Height	Full Height	Full Height	38.1-ft / 11.6-m
Maximum Drive Height (Outdoor)	19-ft / 5.79-m	21-ft / 9.8-m	Full Height	Full Height	28-ft / 8.75-m
Weight*	3,450-lb / 1,565-kg	4,400-lb / 1,996-kg	5,295-lb / 2,401-kg	5,620-lb / 2,549.19-kg	6,230-lb / 2826-kg
Ground Bearing Pressure	114 psi / 8.0 kg/cm <sup>2</sup>	107 psi / 7.5 kg/cm <sup>2</sup>	137 psi / 9.6 kg/cm <sup>2</sup>	140 psi / 9.8 kg/cm <sup>2</sup>	152psi / 10.7 kg/cm <sup>2</sup>
Drive Speed—Lowered	3 mph / 4.8 km/h	2.75 mph / 4.4 km/h	3 mph / 4.8 km/h	3 mph / 4.8 km/h	3 mph / 4.8 km/h
Drive Speed—Elevated	0.5 mph / 0.8 km/h	0.5 mph / 0.8 km/h	0.5 mph / 0.8 km/h	0.5 mph / 0.8 km/h	0.5 mph / 0.8 km/h
Max Tilt Rating					
— Indoor	1.75 Degrees	1.50 Degrees	2.50 Degrees	2.50 Degrees	2.50 Degrees
— Outdoor	1.50 Degrees	1.50 Degrees	1.50 Degrees	1.50 Degrees	1.50 Degrees
— Fore and Aft	3.75 Degrees	3.50 Degrees	3.50 Degrees	3.50 Degrees	3.50 Degrees
Gradeability	25%	25%	25%	25%	25%
Turning Radius (Inside)	Zero	Zero	Zero	Zero	Zero
Turning Radius (Outside)	66-in / 1.68-m	88.2-in / 2.24-m	88-in / 2.24-m	88-in / 2.24-m	94.4-in / 2.39-m
Max Wind Speed Rating	28 mph / 12.5 m/s	28 mph / 12.5 m/s	28 mph / 12.5 m/s	28 mph / 12.5 m/s	28 mph / 12.5 m/s
Tire Size (Non-Marking Solid)	12.7 x 4-in / 323 x 100-mm	16 x 5-in / 406 x 125-mm	16 x 5-in / 406 x 125-mm	16 x 5-in / 406 x 125-mm	16 x 5-in / 406 x 125-mm
Batteries	4 x 6V 220 amp-hr	4 x 6V, 220 amp-hr	4 x 6V, 220 amp-hr	4 x 6V, 220 amp-hr	4 x 6V, 255 amp-hr
Charger	27 amp	27 amp	27 amp	27 amp	27 amp
Pump	Fixed Displacement Gear	Fixed Displacement Gear	Fixed Displacement Gear	Fixed Displacement Gear	Fixed Displacement Gear
Hydraulic Reservoir	1 gal / 3.8 L	1.25 gal / 4.73 L	1.7 gal / 6.4 L	1.7 gal / 6.4 L	3.2 gal / 12 L
Brakes (on drive wheels)	Multi-Disc Friction	Electric, Friction	Electric, Friction	Electric, Friction	Electric, Friction
Rail Type	QuikFold	Fold Down	Fold Down	Fold Down	Fold Down
Drive	24V DC	24V DC	24V DC	24V DC	24V AC

\*Certain weights and dimensions may vary due to options and to compliance with country standards. Specifications may change to meet country standards or with addition of optional equipment.  
ES1932i Indoor-only model available, consult factory  
1. Dimensions reflect outside measurements.

# DAVINCI SERIES - ALL ELECTRIC

## AE1932 Scissor Lift

### AE1932

Platform Height (Indoor)	19-ft / 5.79-m
Platform Height (Outdoor)	19-ft / 5.79-m
Platform Height — Lowered	38.7-in / 98-cm
Platform Railing Height <sup>1</sup>	44.4-in / 1.28-m
Overall Height	83.2-in / 2.11-m
— With Rails Folded	78.2-in / 1.99-m
Platform Dimensions <sup>2</sup>	65.5 x 29.1-in / 1.66 x 74-cm
— Platform Extension	36-in / 91.4-cm
Overall Machine Length	68.7-in / 1.74-m
Overall Machine Width	32-in / 81-cm
Wheelbase	53-in / 1.34-m
Ground Clearance	2.8-in / 7-cm
Platform Capacity (Indoor)	606-lb / 275-kg
Platform Capacity (Outdoor)	606-lb / 275-kg
— Capacity on Deck Extension	265-lb / 120-kg
No. Occupants (Indoor)	2
No. Occupants (Outdoor)	1
Lift/Lower Time	24/26 seconds
Maximum Drive Height (Indoor)	Full Height
Maximum Drive Height (Outdoor)	Full Height
Weight*	3,475-lb / 1,576-kg
Ground Bearing Pressure	150 psi / 10.5-kg/cm <sup>2</sup>
Drive Speed—Lowered	4 mph / 6.4 km/h
Drive Speed—Elevated	0.5 mph / 0.8 km/h
Max Tilt Rating	
— Indoor (Side to Side)	1.75 Degrees
— Outdoor (Side to Side)	1.5 Degrees
— Fore and Aft	3.75 Degrees
Gradeability	25%
Turning Radius (Inside)	Zero
Turning Radius (Outside)	66-in / 1.68-m
Max Wind Speed Rating	28 mph / 12.5 m/s
Tire Size (Non-Marking Solid)	12.5 x 4-in / 323 x 100-mm
Battery	Single 24V Lithium Ion, 80 aH
Charger	27 amp
Lift System	Fully Electric
Steer System	Fully Electric
Brakes (On Drive Wheels)	Multi-Disc Friction
Rail Type	QuikFold
Drive	24V AC

\*Certain weights and dimensions may vary due to options and to compliance with country standards.

1. Platform railing height with standard QuikFold Rails

2. Dimensions reflect outside measurements.



# ERT SERIES

## ERT2669 / ERT3369 / ERT4069 / ERT4769 Scissors

	<b>ERT2669</b>	<b>ERT3369</b>	<b>ERT4069</b>	<b>ERT4769</b>
Platform Height	26-ft 2-in / 7.98-m	32-ft 8-in / 9.96-m	40-ft 3-in / 12.3-m	47-ft / 14.3-m
Platform Height — Lowered	4-ft 3-in / 1.3-m	4-ft 9-in / 1.46-m	4-ft 10-in / 1.46-m	5-ft 4-in / 1.62-m
Platform Capacity (Single Extension)	1,500-lb / 680-kg	1,000-lb / 454-kg	800-lb / 363-kg	800-lb / 363-kg
— Capacity on Deck Extension	300-lb / 136-kg	300-lb / 136-kg	300-lb / 136-kg	300-lb / 136-kg
No. Occupants (Indoor/Outdoor)	4/4	4/2	3/2	3/2
Platform Railing Height	44.7-in / 1.14-m	44.7-in / 1.14-m	44.7-in / 1.14-m	44.7-in / 1.14-m
Overall Height	96.7-in / 2.46-m	102.9-in / 2.61-m	103-in / 2.62-m	109.1-in / 2.77-m
Platform Dimensions <sup>1</sup>	130.5 x 63-in / 3.3 x 1.6-m	130.5 x 63-in / 3.3 x 1.6-m	130.5 x 63-in / 3.3 x 1.6-m	130.5 x 63-in / 3.3 x 1.6-m
— Platform Extension	42-in / 1.07-m	42-in / 1.07-m	42-in / 1.07-m	42-in / 1.07-m
Overall Machine Length	139-in / 3.53-m	139-in / 3.53-m	139-in / 3.53-m	139-in / 3.53-m
Overall Machine Width	69.3-in / 1.76-m	69.3-in / 1.76-m	69.3-in / 1.76-m	69.3-in / 1.76-m
Wheelbase	81.3-in / 2.07-m	81.3-in / 2.07-m	81.3-in / 2.07-m	81.3-in / 2.07-m
Ground Clearance	9.5-in / 24-cm	9.5-in / 24-cm	9-in / 22-cm	9-in / 22-cm
Lift/Lower Time	36/28 seconds	42/33 seconds	69/46 seconds	81/55 seconds
Maximum Drive Height	Full Height	Full Height	Full Height	Full Height
Weight (Single Extension w/out Leveling Jacks) <sup>2</sup>	8,250-lb / 3,750-kg	9,425-lb / 4,284-kg	10,558-lb / 4,799-kg	15,200-lb / 6,909-kg
Ground Bearing Pressure	40 psi / 2.81 kg/cm <sup>2</sup>	40 psi / 2.81 kg/cm <sup>2</sup>	44 psi / 3.09 kg/cm <sup>2</sup>	56 psi / 3.94 kg/cm <sup>2</sup>
Drive Speed—Lowered	3.5 mph / 5.6 km/h	3.5 mph / 5.6 km/h	3.5 mph / 5.6 km/h	3.5 mph / 5.6 km/h
Drive Speed—Elevated	0.5 mph / 0.8 km/h	0.5 mph / 0.8 km/h	0.3 mph / 0.48 km/h	0.3 mph / 0.48 km/h
Max Tilt Rating (Side-to-Side) <sup>3</sup>	2.5 Degrees	2.5 Degrees	2.5 Degrees	2.5 Degrees
Max Tilt Rating (Fore/Aft) <sup>3</sup>	3 Degrees	3 Degrees	3 Degrees	3 Degrees
Gradeability	40%	35%	35%	35%
Turning Radius (Inside)	83-in / 2.11-m	83-in / 2.11-m	83-in / 2.11-m	83-in / 2.11-m
Turning Radius (Outside)	174.8-in / 4.44-m	174.8-in / 4.44-m	174.8-in / 4.44-m	174.8-in / 4.44-m
Max Wind Speed Rating	28 mph / 12.5 m/s	28 mph / 12.5 m/s	28 mph / 12.5 m/s	28 mph / 12.5 m/s
Tire size (Non-Marking)	26 x 12 Foam-Filled	26 x 12 Foam-Filled	26 x 12 Foam-Filled	26 x 12 Foam-Filled
Batteries	8 x 6V, 225 Ah	8 x 6V, 225 Ah	8 x 6V, 310 Ah	8 x 6V, 375 Ah
Rail Type	Fold Down	Fold Down	Fold Down	Fold Down
Drive (2WD)	AC Electric Drive	AC Electric Drive	AC Electric Drive	AC Electric Drive
Generator Set (Kubota Stage V OC60-E4) <sup>3</sup>	6 hp / 4.5 kW	6 hp / 4.5 kW	6 hp / 4.5 kW	6 hp / 4.5 kW
Hydraulic Reservoir	13.2 gal / 50 L	13.2 gal / 50 L	13.2 gal / 50 L	13.2 gal / 50 L

\*Certain options or country standards increase weight.

Specifications may change without notice to meet country standards or with addition of optional equipment.

1. Dimensions reflect inside measurements.

2. At max height

3. Optional configuration

# RT SERIES (69-IN WIDE)

## RT2669 / RT3369 / RT4069 / RT4769 Scissors

	<b>RT2669</b>	<b>RT3369</b>	<b>RT4069</b>	<b>RT4769</b>
Platform Height	26-ft 2-in / 7.98-m	32-ft 8-in / 9.96-m	40-ft 3-in / 12.3-m	47-ft / 14.3-m
Platform Height — Lowered	4-ft 3-in / 1.3-m	4-ft 9-in / 1.46-m	4-ft 10-in / 1.46-m	5-ft 4-in / 1.62-m
Platform Capacity (Single Extension)	1,500-lb / 680-kg	1,000-lb / 454-kg	800-lb / 363-kg	800-lb / 363-kg
— Capacity on Deck Extension	300-lb / 136-kg	300-lb / 136-kg	300-lb / 136-kg	300-lb / 136-kg
No. Occupants (Indoor/Outdoor)	4/4	4/2	3/2	3/2
Platform Railing Height	44.7-in / 1.14-m	44.7-in / 1.14-m	44.7-in / 1.14-m	44.7-in / 1.14-m
Overall Height	96.7-in / 2.46-m	102.9-in / 2.61-m	103-in / 2.62-m	109.1-in / 2.77-m
Platform Dimensions <sup>1</sup>	130.5 x 63-in / 3.3 x 1.6-m	130.5 x 63-in / 3.3 x 1.6-m	130.5 x 63-in / 3.3 x 1.6-m	130.5 x 63-in / 3.3 x 1.6-m
— Platform Extension	42-in / 1.07-m	42-in / 1.07-m	42-in / 1.07-m	42-in / 1.07-m
Overall Machine Length	139-in / 3.53-m	139-in / 3.53-m	139-in / 3.53-m	139-in / 3.53-m
Overall Machine Width	69.3-in / 1.76-m	69.3-in / 1.76-m	69.3-in / 1.76-m	69.3-in / 1.76-m
Wheelbase	81.3-in / 2.07-m	81.3-in / 2.07-m	81.3-in / 2.07-m	81.3-in / 2.07-m
Ground Clearance	9.5-in / 24-cm	9.5-in / 24-cm	9-in / 22-cm	9-in / 22-cm
Lift/Lower Time	32/37 seconds	40/40 seconds	50/48 seconds	65/60 seconds
Maximum Drive Height	Full Height	Full Height	Full Height	Full Height
Weight (Single Extension w/out Leveling Jacks)*	8,090-lb / 3,677-kg	9,080-lb / 4,127-kg	10,540-lb / 4,791-kg	15,000-lb / 6,818-kg
Ground Bearing Pressure	40 psi / 2.81 kg/cm <sup>2</sup>	40 psi / 2.81 kg/cm <sup>2</sup>	44 psi / 3.09 kg/cm <sup>2</sup>	56 psi / 3.94 kg/cm <sup>2</sup>
Drive Speed—Lowered	3.5 mph / 5.6 km/h	3.5 mph / 5.6 km/h	3.0 mph / 4.82 km/h	3.0 mph / 4.82 km/h
Drive Speed—Elevated	0.5 mph / 0.8 km/h	0.5 mph / 0.8 km/h	0.3 mph / 0.48 km/h	0.3 mph / 0.48 km/h
Max Tilt Rating (Side-to-Side) <sup>2</sup>	2.5 Degrees	2.5 Degrees	2.5 Degrees	2.5 Degrees
Max Tilt Rating (Fore/Aft) <sup>2</sup>	3 Degrees	3 Degrees	3 Degrees	3 Degrees
Gradeability	40%	35%	35%	35%
Turning Radius (Inside)	83-in / 2.11-m	83-in / 2.11-m	83-in / 2.11-m	83-in / 2.11-m
Turning Radius (Outside)	174.8-in / 4.44-m	174.8-in / 4.44-m	174.8-in / 4.44-m	174.8-in / 4.44-m
Max Wind Speed Rating	28 mph / 12.5 m/s	28 mph / 12.5 m/s	28 mph / 12.5 m/s	28 mph / 12.5 m/s
Tire size	26 x 12 Foam-Filled	26 x 12 Foam-Filled	26 x 12 Foam-Filled	26 x 12 Foam-Filled
Rail Type	Fold Down	Fold Down	Fold Down	Fold Down
Drive	4WD Hydrostatic	4WD Hydrostatic	4WD Hydrostatic	4WD Hydrostatic
Dual Fuel Engine	Kubota WG972-GL-E4 31 hp / 23.2 kW	Kubota WG972-GL-E4 31 hp / 23.2 kW	Kubota WG972-GL-E4 31 hp / 23.2 kW	Kubota WG972-GL-E4 31 hp / 23.2 kW
Diesel Engine	Kubota D1305-E4B 24.8 hp / 18.5 kW	Kubota D1305-E4B 24.8 hp / 18.5 kW	Kubota D1305-E4B 24.8 hp / 18.5 kW	Kubota D1305-E4B 24.8 hp / 18.5 kW
Fuel Tank Capacity	10 gal / 38 L	10 gal / 38 L	10 gal / 38 L	10 gal / 38 L
Hydraulic Reservoir	13.2 gal / 50 L	13.2 gal / 50 L	13.2 gal / 50 L	13.2 gal / 50 L

\*Certain options or country standards increase weight.

Specifications may change without notice to meet country standards or with addition of optional equipment.

1. Dimensions reflect inside measurements.

2. At max height

# RT LARGE ROUGH TERRAIN SERIES (94-IN WIDE)

## RT3394 / RT4394 / RT5394 Scissors

	<b>RT3394</b>	<b>RT4394</b>	<b>RT5394</b>
Platform Height—Elevated	33-ft / 10.06-m	43-ft / 13.11-m	53-ft / 16.5-m
Platform Height—Lowered	5-ft 3.57-in / 1.97-m	6-ft 5-in / 1.84-m	7-ft / 2.13-m
No. Occupants	6	6	6
Platform Railing Height	43.5-in / 1.1-m	43.5-in / 1.1-m	43.5-in / 1.1-m
Overall Height	9-ft 1-in / 2.8-m	9-ft 10-in / 3.0-m	10-ft 5-in / 3.2-m
—With Rails Lowered	6-ft 5.75-in / 1.97-m	7-ft 2.4-in / 2.19-m	7-ft 9-in / 2.36-m
Platform Dimensions <sup>1</sup>	70.5 x 149.8-in / 1.8 x 3.8-m	70.5 x 149.8-in / 1.8 x 3.8-m	70.5 x 149.8-in / 1.8 x 3.8-m
Platform Extension	4-ft / 1.22-m	4-ft / 1.22-m	4-ft / 1.22-m
Overall Length	16-ft / 4.9-m	16-ft / 4.9-m	16-ft / 4.9-m
Overall Width	7-ft 9-in / 2.36-m	7-ft 9-in / 2.36-m	7-ft 7-in / 2.31-m
Wheelbase	9-ft 9-in / 2.97-m	9-ft 9-in / 2.97-m	9-ft 9-in / 2.97-m
Ground Clearance	13.6-in / 34.5-cm	13.6-in / 34.5-cm	12-in / 30-cm
Platform Capacity	2,250-lb / 1,020-kg	1,500-lb / 680-kg	1,500-lb / 680-kg
—Capacity on Extension	500-lb / 227-kg	500-lb / 227-kg	500-lb / 227-kg
—Capacity w/Dual Extensions	2,000-lb / 907-kg	1,250-lb / 567-kg	1,250-lb / 567-kg
Lift/Lower Time	35/37 seconds	45/47 seconds	59/55 seconds
Maximum Drive Height	Full Height	Full Height	32-ft / 9.75-m
Weight w/One Extension*	11,820-lb / 5,372-kg	15,210-lb / 6,914-kg	17,110-lb / 7,761-kg
Ground Bearing Pressure**	73 psi / 5.1-kg/cm <sup>2</sup>	83 psi / 5.8-kg/cm <sup>2</sup>	90 psi / 6.3-kg/cm <sup>2</sup>
Drive Speed (Lowered)	3.5 mph / 4.8 km/h	3.5 mph / 4.8 km/h	3.5 mph / 5.6 km/h
Drive Speed (Elevated)	0.5 mph / 0.8 km/h	0.5 mph / 0.8 km/h	0.5 mph / 0.8 km/h
Tilt Rating (Side-to-Side)	3 Degrees	3 Degrees	1.5 Degrees
Tilt Rating (Side-to-Side/Fore-Aft)	5 Degrees	5 Degrees	1.5 Degrees
Gradeability	45%	45%	40%
Turning Radius (Inside)	8-ft 10.5-in / 2.71-m	8-ft 10.5-in / 2.71-m	9-ft / 2.74-m
Turning Radius (Outside)	19-ft 5.5-in / 5.93-m	19-ft 5.5-in / 5.93-m	19-ft 9-in / 6.02-m
Max Wind Speed Rating	28 mph / 12.5 m/s	28 mph / 12.5 m/s	28 mph / 12.5 m/s
Tire Size/Type	12 x 16.5 Foam-Filled	12 x 16.5 Foam-Filled	12 x 16.5 Foam-Filled
Axle Oscillation	8-in / 20-cm	8-in / 20-cm	8-in / 20-cm
Brakes—4 Wheel	Spring Applied	Spring Applied	Spring Applied
Dual Fuel Engine	Kubota W6972 31 hp / 23 kW	Kubota W6972 31 hp / 23 kW	Kubota W6972 31 hp / 23 kW
Diesel Engine	Kubota D1305 24.8 hp / 18.5 kW	Kubota D1305 24.8 hp / 18.5 kW	Kubota D1305 24.8 hp / 18.5 kW
Fuel Tank Capacity	22 gal / 83.3 L	22 gal / 83.3 L	22 gal / 83.3 L
Hydraulic Reservoir	32 gal / 121.42 L	32 gal / 121.42 L	32 gal / 121.42 L

\*Certain options or country standards increase weight.

\*\*Ground bearing pressure applies to standard tires.

Specifications may change without notice to meet country standards or with addition of optional equipment.

1. Dimensions reflect inside measurements.



# 1230ES

## Electric Vertical Mast Lift

### 1230ES

Platform Height — Elevated	12-ft / 3.66-m
Platform Height — Lowered	1-ft 10-in / 0.56-m
Platform Railing Height	3-ft 7-in / 1.10-m
Overall Height	5-ft 5-in / 1.66-m
Platform Dimensions <sup>1</sup>	27 x 33-in / 0.68 x .84-m
Overall Length	54-in / 1.36-m
Overall Width	30-in / 0.76-m
Wheelbase	3-ft 5-in / 1.04-m
Ground Clearance	2.6-in / 66-cm
Platform Capacity	500-lb / 227-kg
Lift/Lower Time (No Load)	15/21 seconds
Lift/Lower Time (Rated Load)	17/25 seconds
Maximum Drive Height	Full Height
Weight	1,775-lb / 805-kg
Ground Bearing Pressure	123 psi / 8.65-kg/cm <sup>2</sup>
Drive Speed — Lowered	3 mph / 4.8 km/h
Drive Speed — Elevated	0.5 mph / 0.8 km/h
Gradeability	25%
Turning Radius (Inside)	4.4-in / 11.2-cm
Turning Radius (Outside)	4-ft 10-in / 1.46-m
Max Wind Speed Rating	0 mph / 0 m/s - Indoor Use Only
Tire Size/Type	100 x 323 Non-Marking Solid
Brakes (On Drive Wheels)	Electric, Friction
Batteries	4 x 6V, 220 amp-hr
Charger	20 Amp Automatic (120V/240V - 50/60 HZ)
Drive	24V Electric
Hydraulic Reservoir	1.88 gal / 7.1 L

NOTE: Rated for indoor use only

1. Dimensions reflect inside measurements

# ACCESSMASTER® MANUALLY PROPELLED Vertical Personnel Lifts

<b>AM Series (With Outriggers)</b>	<b>25AM</b>	<b>30AM</b>	<b>38AM</b>
Working Height	31-ft / 9.45-m	35 -ft 7 in / 10.88-m	44-ft / 13.4-m
Platform Height	25-ft 2-in / 7.67-m	29 ft 7 in. / 9.05-m	38-ft / 11.58-m
Platform Capacity*	350-lb / 160-kg	300-lb / 136-kg	300-lb / 136-kg
Standard Platform	26 x 28-in / 66 x 71-cm	26 x 28-in / 66 x 71-cm	26 x 28-in / 66 x 71-cm
Overall Height	77-in / 1.95-m	78-in / 1.98-m	104.5-in / 2.65-m
Overall Width	29.5-in / 0.75-m	29.5-in / 0.75-m	29.5-in / 0.75-m
Overall Length	55-in / 1.40-m	58-in / 1.47-m	61-in / 1.55-m
Overall Length—Without Battery Pack	47-in / 1.19-m	47-in / 1.19-m	47-in / 1.19-m
Overall Height—Tilted Back	N/A	N/A	77.5-in / 1.97-m
Overall Length—Tilted Back	N/A	N/A	119-in / 3.02-m
Ground Entry Height	16.5-in / 0.42 -m	16.5-in / 0.42 -m	16.5 -in / 0.42-m
Outrigger Footprint Length	68.1-in / 1.57-m	79-in / 2-m	85.8-in / 2.13-m
Outrigger Footprint Width	62-in / 1.57-m	72-in / 1.83-m	80.5-in / 2.0-m
Distance to Wall—Front	6-in / 15.5-cm	9.5-in / 24-cm	15-in / 38-cm
Distance to Wall—Side	11.5-in / 28.9-cm	20.5-in / 52-cm	24-in / 61-cm
Weight**—AC	825-lb / 374-kg	1,030-lb / 467-kg	1,265-lb / 574-kg
Weight**—DC	905-lb / 411-kg	1,110-lb / 504-kg	1,395-lb / 633-kg
Rear Wheels	10 x 2-in / 25 x 5-cm	10 x 2-in / 25 x 5-cm	10 x 2-in / 25 x 5-cm
Front Caster Wheels	6 x 2-in / 15 x 5-cm	6 x 2-in / 15 x 5-cm	6 x 2-in / 15 x 5-cm
Ground Bearing Pressure	49 psi / 3.5-kg/cm <sup>2</sup>	49 psi / 3.5-kg/cm <sup>2</sup>	49 psi / 3.5-kg/cm <sup>2</sup>
Lift/Lower Time	62/37 seconds	72/35 seconds	120/50 seconds
Batteries	12 V DC/93 Amp hr	12 V DC/93 Amp hr	12 V DC/93 Amp hr
Max Outrigger Load	510-lb	510-lb	510-lb
Max Outrigger Ground Bearing Pressure	49 psi / 3.5-kg/cm <sup>2</sup>	49 psi / 3.5-kg/cm <sup>2</sup>	49 psi / 3.5-kg/cm <sup>2</sup>
Front to Front Gradability Max	10 Degrees	9 Degrees	8 Degrees
Side to Side Gradability Max	11.5 Degrees	8.4 Degrees	7.1 Degrees
Max Wind Speed Rating	0 mph / 0 m/s - Indoor Use Only	0 mph / 0 m/s - Indoor Use Only	0 mph / 0 m/s - Indoor Use Only

\* Standard Platform.

\*\* Certain options or country standards increase weight.

Specifications may change to meet country standards or with addition of optional equipment.

# E18 SERIES

## Mobile Vertical Mast Lifts

	NEW <b>E18MML</b>	NEW <b>E18MCL</b>
Platform Height—Elevated (Indoor)	18-ft / 5.5-m	18-ft / 5.5-m
Platform Height - Elevated (Outdoor)	N/A	13-ft / 4-m
Platform Capacity*	400-lb / 181-kg	400-lb / 181-kg
—Capacity on Deck Extension*	N/A	250-lb / 113-kg
—Capacity on Work Tray*	100-lb / 45-kg	N/A
No. Occupants (Indoor)	1	1
No. Occupants (Outdoor)	N/A	1
Overall Height	78-in / 1.98-m	78-in / 1.98-m
Platform Dimensions*	29.5 x 28-in / 75 x 71-cm	30 x 51-in (Extracted) / 76 x 130-cm
—Platform Extension*	N/A	19.5-in / 50-cm
Overall Machine Length	32-in / 81-cm	32-in / 81-cm
Overall Machine Width	30-in / 76-cm	30-in / 76-cm
Platform Entry Height	18.5-in / 47-cm	18.5-in / 47-cm
Wheelbase	41.4-in / 1.05-m	41.4-in / 1.05-m
Ground Clearance	2.5-in / 6.35-cm	2.5-in / 6.35-cm
Lift/Lower Time	23/23	23/23
Maximum Drive Height (Indoor)	Full Height	Full Height
Maximum Drive Height (Outdoor)	N/A	13-ft / 4-m
Weight**	1,950-lb / 885-kg	1,950-lb / 885-kg
Ground Bearing Pressure	TBD	TBD
Drive Speed—Lowered	2.5 mph / 4 km/h	2.5 mph / 4 km/h
Drive Speed—Elevated	0.5 mph / .8 km/h	0.5 mph / .8 km/h
Gradeability	30%	30%
Turning Radius (Inside)	Zero	Zero
Turning Radius (Outside)	48-in / 1.2-m	55-in / 1.4-m
Max Wind Speed Rating	0 mph / 0 m/s - Indoor Use Only	28 mph / 12.5 m/s
Tire Size (Rear) - Non-Marking	10 x 3-in	10 x 3-in
Tire Size (Front) - Non-Marking	8-in Casters	8-in
Batteries	Four 6V - 220 AH	Four 6V - 220 AH
Charger	27 amp	27 amp
Brakes (On Drive Wheels)	Electric	Electric
Drive	Drive 4 Brush Direct Electric Drive (Planetary Gear)	Drive 4 Brush Direct Electric Drive (Planetary Gear)

\*Based on Standard Configuration

\*\*Certain weights and dimensions may vary due to options and to compliance with country standards.

# ECOLIFT™ SERIES

## Non-Powered Vertical Lifts

	<b>PECOLIFT</b>	<b>ECOLIFT</b>
Working Height	11-ft / 3.33-m	13-ft / 4.03-m
Platform Height	5-ft / 1.50-m	7-ft / 2.20-m
Stowed Height	5-ft .08-in / 1.55-m	6-ft 3-in / 1.94-m
Stowed Width	27.5-in / 70-cm	27.5-in / 70-cm
Stowed Length	38.7-in / 0.985-m	50.3-in / 1.28-m
Platform Size	28 x 23.6-in / 72 x 60-cm	33.4 x 25.4-in / 85 x 64.4-cm
Rated Capacity	330-lb / 150-kg	330-lb / 150-kg
Weight	397-lb / 180-kg	672-lb / 305-kg
Max Ground Bearing Pressure Front	160 psi / 11.2-kg/cm <sup>2</sup>	170 psi / 11.9-kg/cm <sup>2</sup>
Max Ground Bearing Pressure Rear	168 psi / 11.8-kg/cm <sup>2</sup>	175 psi / 12.3-kg/cm <sup>2</sup>

CE – Eco\_479  
ANSI – Eco70

CE – Peco\_476  
ANSI – Eco50

# Push-Around Mast Lifts

	<b>Nano_473</b>	<b>PowerTower_481</b>
Working Height	14-ft 2-in / 4.32-m	16-ft 2-in / 5.11-m
Platform Height	8-ft 2-in / 2.5-m	10-ft 2-in / 3.10-m
Stowed Height	61.4-in / 1.56-m	6-ft 1-in / 1.85-m
Platform Entry Height	14-in / 36-cm	29-in / 74-cm
Platform Size	39 x 29-in / 1 x .75-m	60 x 29.5-in / 1.52 x .75-m
Overall Vehicle Length	47-in / 1.19-m	63-in / 1.60-m
Overall Vehicle Width	29.5-in / 75-cm	30-in / 76-cm
Platform Capacity	440-lb / 200-kg	550-lb / 249-kg
Weight	628-lb / 285-kg	753-lb / 342-kg
Max Ground Bearing Pressure Front	173 psi / 12.2-kg/cm <sup>2</sup>	489 psi / 34.4-kg/cm <sup>2</sup>
Max Ground Bearing Pressure Rear	166 psi / 11.7-kg/cm <sup>2</sup>	321 psi / 22.6-kg/cm <sup>2</sup>
Batteries	12V 120 amp-hr	12V 120 amp-hr
Battery Charger	Automatic 110V-240V Charger	Automatic 110V-240V Charger

CE – Nano\_473  
ANSI – 830P

CE – PowerTower\_481  
ANSI – 1030P



# MSP SERIES

## Mobile Stock Pickers

	<b>10MSP</b>	<b>NEW E18MSP</b>
Platform Height—Elevated (Indoor)	10-ft / 3.05-m	18-ft / 5.5-m
Platform Height - Elevated (Outdoor)	N/A	N/A
Platform Capacity*	350-lb / 159-kg	400-lb / 181-kg
—Capacity on Deck Extension*	N/A	N/A
—Capacity on Work Tray*	250-lb / 113-kg	100-lb / 45-kg
No. Occupants (Indoor)	1	1
No. Occupants (Outdoor)	N/A	N/A
Overall Height	57-in / 145-cm	78-in / 1.98-m
Platform Dimensions*	27 x 20-in / 69 x 49.5-cm	29.5 x 28-in / 75 x 71-cm
—Platform Extension*	N/A	N/A
Overall Machine Length	61-in / 155-cm	32-in / 81-cm
Overall Machine Width	32.5-in / 82.5-cm - With Bumper	30-in / 76-cm
Platform Entry Height	13.75-in / 35-cm	18.5-in / 47-cm
Wheelbase	46.4-in / 1.18-m	41.4-in / 1.05-m
Ground Clearance	2-in / 5-cm	2.5-in / 6.35-cm
Lift/Lower Time	13/13 seconds	23/23
Maximum Drive Height (Indoor)	Full Height	Full Height
Maximum Drive Height (Outdoor)	N/A	N/A
Weight**	1,100-lb / 499-kg	1,950-lb / 885-kg
Ground Bearing Pressure	TBD	TBD
Drive Speed—Lowered	5.0 mph / 8.0 km/h	2.5 mph / 4 km/h
Drive Speed—Elevated	0.5 mph / .8 km/h	0.5 mph / .8 km/h
Gradeability	15%	30%
Turning Radius (Inside)	Zero	Zero
Turning Radius (Outside)	65-in / 1.65-m	48-in / 1.2-m
Max Wind Speed Rating	0 mph / 0 m/s - Indoor Use Only	0 mph / 0 m/s - Indoor Use Only
Tire Size (Rear) - Non-Marking	12.62 x 4-in (32 x 10-cm)	10 x 3-in
Tire Size (Front) - Non-Marking	8 x 2.5-in (20 x 6-cm) Caster Wheels	8-in Casters
Batteries	4 Sealed 210 amp-hr Maintenance Free (AGM)	Four 6V - 220 AH
Charger	25 amp	27 amp
Brakes (On Drive Wheels)	Electric	Electric
Drive	Drive 4 Brush Direct Electric Drive (Planetary Gear)	Drive 4 Brush Direct Electric Drive (Planetary Gear)

\*Based on Standard Configuration

\*\*Certain weights and dimensions may vary due to options and to compliance with country standards.

# **Mobile Elevating Work Platforms**

## Booms

# TOUCAN<sup>®</sup> SERIES

## Mast-Style Boom Lifts

	<b>20E</b>	<b>26E</b>	<b>32E</b>	<b>12E Plus</b>
Platform Height	20-ft 3-in / 6.2-m	26-ft 6-in / 8.10-m	32-ft 3-in / 9.83-m	32-ft 3-in (9.83-m)
Horizontal Outreach	6-ft 5-in / 1.97-m	8-ft 8-in / 2.64-m	14-ft 9-in / 4.55-m	14-ft 9-in (6.05-m)
Up and Over Height	16-ft 7-in / 5.05-m	21-ft 4-in / 6.51-m	22-ft 8-in / 6.95-m	22-ft 8-in (7.12-m)
Swing	345 Degrees Non-Continuous	345 Degrees Non-Continuous	345 Degrees Non-Continuous	345 Degrees Non-Continuous
Platform Capacity	500-lb / 227-kg	500-lb / 227-kg	500-lb / 227-kg	500-lb (200-kg)
Platform Rotator	N/A	N/A	120 Degrees Hydraulic	120 Degrees Hydraulic
Jib (Range of Articulation)	112 Degrees (+45, -67) Vertical	127 Degrees (+66, -61) Vertical	125 Degrees Vertical/10- to 15-ft Telescopic	125 Degrees Vertical/10- to 15-ft Telescopic
Platform Size	32 x 36-in / 0.81 x 0.90-m	28 x 36-in / 0.7 x 0.9-m	27.5 x 41.3-in / 0.70 x 1.05-m	27.5 x 41.3-in (0.70 x 1.05-m)
Overall Width	3-ft 3-in / 0.99-m	3-ft 3-in / 0.99-m	3-ft 9-in / 1.20-m	3-ft 9-in (1.20-m)
Tailswing	6.7-in / 17-cm	4.7-in / 12-cm	5.9-in / 15-cm	5.9-in (13-cm)
Height Stowed	6-ft 5-in / 1.99-m	6-ft 5-in / 1.99-m	6-ft 5-in / 1.99-m	6-ft 5-in (1.99-m)
Stowed Length (Drop Bar)	6-ft 9-in / 2.10-m	9-ft 3-in / 2.82-m	12-ft / 3.65-m	12-ft (3.65-m)
Wheelbase	3-ft 9-in / 1.20-m	3-ft 9-in / 1.20-m	5-ft 3-in / 1.6-m	5-ft 3-in (1.6-m)
Ground Clearance	3.9-in / 10-cm	3.9-in / 10-cm	3.9-in / 10-cm	3.9-in (10-cm)
Weight*	4,980-lb / 2,260-kg	6,900-lb / 3,130-kg	10,140-lb / 4,600-kg	10,802-lb (4,900-kg)
Ground Bearing Pressure**	255 psi / 17.9-kg/cm <sup>2</sup>	319 psi / 22.4-kg/cm <sup>2</sup>	185 psi / 13-kg/cm <sup>2</sup>	185 psi (14.0-kg/cm <sup>2</sup> )
Drive Speed (Lowered)	3.4 mph / 5.5 km/h	3.4 mph / 5.5 km/h	3.4 mph / 5.5 km/h	3.4 mph (5.5 km/h)
Drive Speed (Elevated)	.47 mph / .76 km/h	.47-.25 mph / .76-.41 km/h <sup>1</sup>	.47 mph / .76 km/h	30%
Gradeability	25%	25%	25%	2-ft 5-in (0.75-m)
Turning Radius (Inside)	1-ft 8-in / 0.55-m	1-ft 8-in / 0.55-m	2-ft 5-in / 0.75-m	8-ft 5-in (2.6-m)
Turning Radius (Outside)	6-ft 5-in / 1.99-m	6-ft 5-in / 1.99-m	8-ft 5-in / 2.6-m	18 x 7 x 12.12 Non-Marking
Tire Size/Type	16 x 5 x 10.5 Non-Marking	12.5 x 406 Non-Marking	18 x 7 x 12.12 Non-Marking	48V DC
Electrical System	24V DC	24V DC	48V DC	260 amp-hr
Batteries	4x6V 213Ah AGM	260 amp-hr AGM	260 amp-hr	20 amps
Battery Charger	27 amps	27 amps	20 amps	2 — AC
Drive Motors	2 — AC	2 — AC	2 — AC	Spring Applied Disc
Brakes	Spring Applied Disc	Spring Applied Disc	Spring Applied Disc	6.4 hp/ 5.2 cc/rev
Hydraulic Motor/Pump	6.4 hp/ 3.3 cc/rev	6.4 hp/ 5.2 cc/rev	6.4 hp/ 5.2 cc/rev	5.8 gal (22 L)
Hydraulic Reservoir	1.98 gal / 7.5 L	2.38 gal / 9 L	5.8 gal / 22 L	

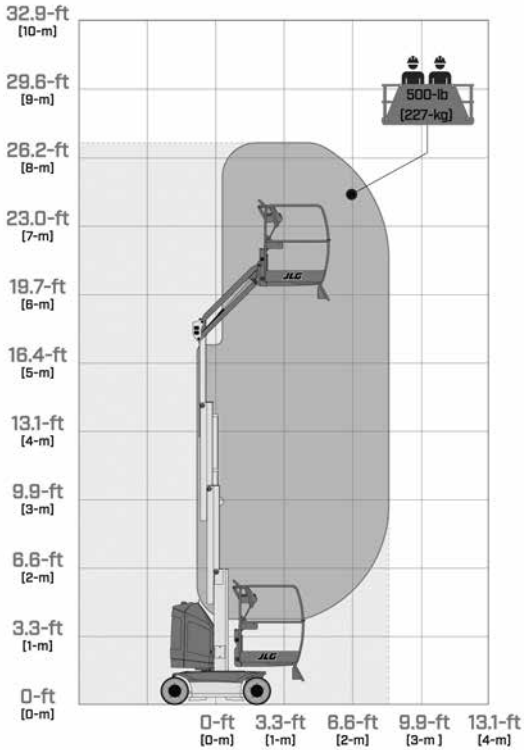
\*Certain options or country standards increase weight.

\*\*Ground bearing pressure applies to standard tires.

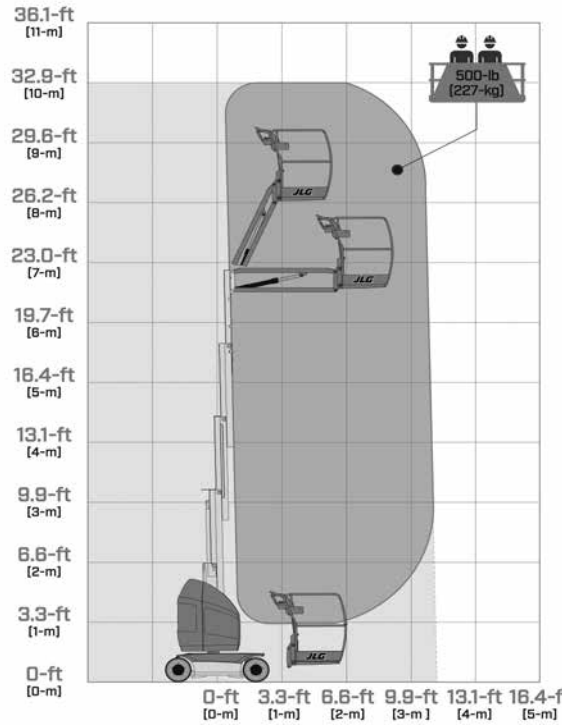
1. .47 mph up to 23-ft 7.5-in in platform height (with jib fully raised); .25 mph above 23-ft 7.5-in in platform height (with jib fully raised):



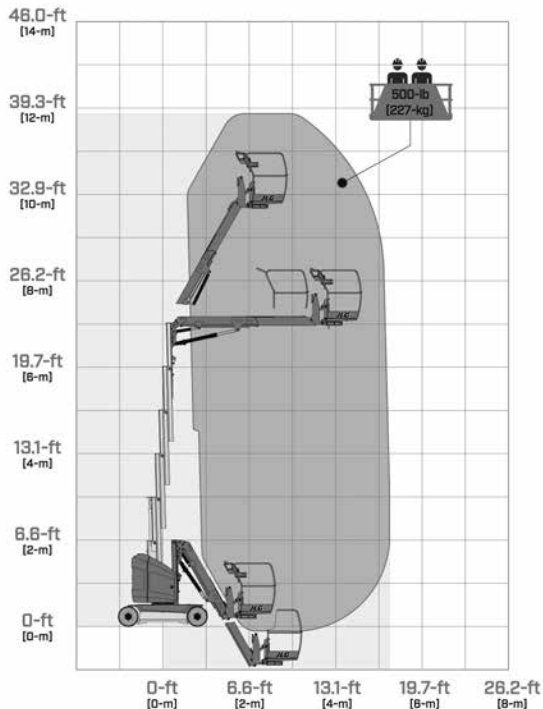
## 20E



## 26E



## 12E - 32E



### SPECIAL FEATURES INCLUDE:

- Compact dimensions for accessing hard-to-reach areas.
- Versatile articulating jib provides up to 14-ft 6-in (4.42-m) up and over reach.
- 345 degree rotating mast for unmatched positioning capabilities.
- Platform rotator (standard on 32E).
- Capacity for two workers and supplies.
- Drive through doorways and down narrow aisles.
- Navigate around multiple obstacles on the ground and in the air.
- Long lasting, environmentally friendly electric power.

# Compact Crawler Series

	<b>X430AJ</b>	<b>X500AJ</b>	<b>X540AJ</b>	<b>X600AJ*</b>	<b>X660SJ</b>	<b>X770AJ</b>	<b>X1000AJ</b>
Platform Height	43-ft 6-in / 13.30-m	49-ft / 14.95-m	54-ft / 16.46-m	59-ft 3-in / 18.05-m	65-ft 7-in / 20-m	77-ft 5-in / 23.60-m	100-ft / 30.48-m
Horizontal Outreach	21-ft 7-in - 6.60-m	23-ft / 7.00-m	24-ft / 7.32-m	30-ft / 9.1-m	39-ft / 11.9-m	43-ft / 13.1-m	54-ft 2-in / 16.50-m
Swing	360 Degrees Non-continuous	360 Degrees Non-continuous	360 Degrees Non-continuous	360 Degrees Non-continuous	360 Degrees Non-continuous	360 Degrees Non-continuous	360 Degrees Non-continuous
Max. Platform Capacity	500-lb / 227-kg	500-lb / 227-kg	500-lb / 227-kg	500-lb / 227-kg	500-lb / 227-kg	500-lb / 227-kg	500-lb / 227-kg
Platform Rotation	124 Degrees (+/-62)	124 Degrees (+/-62)	124 Degrees (+/-62)	124 Degrees (+/-62)	124 Degrees (+/-62)	124 Degrees (+/-62)	180 Degrees (+85/-95)
Jib (Range of Articulation)	89 Degrees (0/-89)	89 Degrees (0/-89)	89 Degrees (0/-89)	89 Degrees (0/-89)	89 Degrees (0/-89)	89 Degrees (0/-89)	180 Degrees (+85/-95)
Platform Size	58 x 30-in / 1.47 x 0.76-m	58 x 30-in / 1.47 x 0.76-m	55 x 30.4-in / 1.4 x 0.77-m	55 x 31-in / 1.4 x 0.77-m	51.5 x 25.5-in / 1.31 x 0.65-m	58 x 30-in / 1.47 x 0.76-m	63 x 28-in / 1.60 x 0.71-m
Overall Width	29-in / 75-cm	31-in / 78-cm	30.4-in / 77-m	31-in / 78-cm	35-in / 89-cm	39-in / 99-cm	47-in / 119-m
Stowed Height	6-ft 6-in / 1.98-m	6-ft 6-in / 1.98-m	6-ft 7-in / 1.99-m	6-ft 7-in / 1.99-m	6-ft 6-in / 1.98-m	6-ft 6-in / 1.98-m	6-ft 6-in / 1.98-m
Outrigger Footprint	9-ft 8-in x 9-ft 8-in / 3.0 x 3.0-m	10-ft 5-in x 10-ft 5-in / 3.17 x 3.17-m	9-ft 7-in x 9-ft 7-in / 2.9-m x 2.9-m	9-ft 7-in x 9-ft 7-in / 2.9-m x 2.9-m	14-ft 1-in x 13-ft 4-in / 4.27-m x 4.08-m	14-ft 6-in x 14-ft 3-in / 4.41 x 4.31-m	18-ft 2-in x 16-ft 5-in / 5.49 x 5-m
Outrigger Footprint - Narrow	N/A	N/A	N/A	N/A	18-ft 10-in x 7-ft 11-in / 5.73-m x 2.41-m	19-ft 2-in x 9-ft 3-in / 5.84 x 2.81-m	22-ft 2-in x 12-ft 2-in / 6.71 x 3.71-m
Stowed Length	13-ft 2-in / 4.02-m	14-ft 10-in / 4.53-m	16-ft 7-in / 5.1-m	16-ft 5-in / 5.01-m	21-ft 11-in / 6.44-m	20-ft 9-in / 6.34-m	21-ft 3-in / 6.48-m
Without Platform	11-ft 2-in / 3.40-m	13-ft 8-in / 4.16-m	14-ft 6-in / 4.4-m	14-ft 5-in / 4.4-m	19-ft 1-in / 5.82-m	19-ft 7-in / 5.98-m	19-ft 3-in / 5.80-m
Track Length	4-ft 1-in / 1.24-m	4-ft 1-in / 1.24-m	4-ft 10-in / 1.5-m	4-ft 10-in / 1.47-m	5-ft 7-in / 1.71-m	6-ft 10-in / 2.08-m	6-ft 10-in / 2.08-m
Weight**	4,392-lb / 1,992-kg	5,071 lb / 2,300-kg	6,239-lbs / 2,830-kg	6,548-lbs / 2,970-kg	7,273 lb / 3,350-kg	9,665 lb / 4,385-kg	16,790 lb / 7,616-kg
Ground Bearing Pressure							
—Outriggers	34.1 psi / 2.40 kg/cm <sup>2</sup>	35.53 psi / 2.49 kg/cm <sup>2</sup>	36 psi / .62 kg/cm <sup>2</sup>	44.09 psi / 3.09 kg/cm <sup>2</sup>	79.7psi / 5.6 km/cm <sup>2</sup>	64.1 psi / 4.50 kg/cm <sup>2</sup>	58 psi / 4.1 kg/cm <sup>2</sup>
—Tracks	8.20 psi / 0.58 kg/cm <sup>2</sup>	9.72 psi / .68 kg/cm <sup>2</sup>	8.8 psi / .62 kg/cm <sup>2</sup>	9.28 psi / .65 kg/cm <sup>2</sup>	9.08psi / .63 kg/cm <sup>2</sup>	7.7 psi / 0.54 kg/cm <sup>2</sup>	11.3 psi / 0.79 kg/cm <sup>2</sup>
Drive Speed	0.87 mph / 1.4 km/h	0.8 mph / 1.3 km/h	1.6 mph / 2.5 km/h	1.6 mph / 2.5 km/h	1.2 mph / 2.0 km/h	0.7 mph / 1.2 km/h	0.8 mph / 1.3 km/h
Gradeability	28%	28%	28%	28%	40%	28%	28%
Max Wind Speed Rating	28 mph / 12.5 m/s	28 mph / 12.5 m/s	28 mph / 12.5 m/s	28 mph / 12.5 m/s	28 mph / 12.5 m/s	28 mph / 12.5 m/s	28 mph / 12.5 m/s
Engine	Honda iGX390 11.7 hp / 8.7 kW	Honda iGX390 11.7 hp / 8.7 kW	Diesel Kubota 14.5 hp / 10.81 Kw	Diesel Kubota Z602 19.5 hp / 14.5 kW	Diesel Kubota Z602 14.5 HP / 10.8kW	Diesel Kubota D902 21.6 hp / 16.1 kW	Diesel Kubota D902 21.6 hp / 16.1 kW
Electric System (Optional)	100Ah 36V Lithium-Ion	100Ah 48V Lithium-Ion	120Ah 64V Lithium-Ion	120Ah 64V Lithium-Ion	120Ah 51.4V Lithium-Ion	100Ah 76V Lithium-Ion	150Ah 76V Lithium-Ion
Bi-Energy Option Available	No	No	Yes	Yes	Yes	Yes	Yes
Fuel Tank Capacity (Diesel)	1.4 gal. / 5.3 L	1.5 gal. / 5.9 L	4 gal / 15/5 L	4 gal / 15/5 L	7.4 gal. / 28-L	5 gal. / 19-L	6.6 gal. / 25-L
AC Motor	120V 60 Hz / 1.2 kW	120V 60 Hz / 1.2 kW	120V 60 Hz / 1.2 kW	120V 60 Hz / 1.2 kW	120V 60 Hz / 1.2 kW	120V 60 Hz / 1.2 kW	120V 60 Hz / 1.2 kW
Outrigger Pad Diameter	11.8-in / 30-cm	11.8-in / 30-cm	11.8-in / 30-cm	11.8-in / 30-cm	9-in / 23-cm	11.8-in / 30-cm	15.7-in / 40-cm

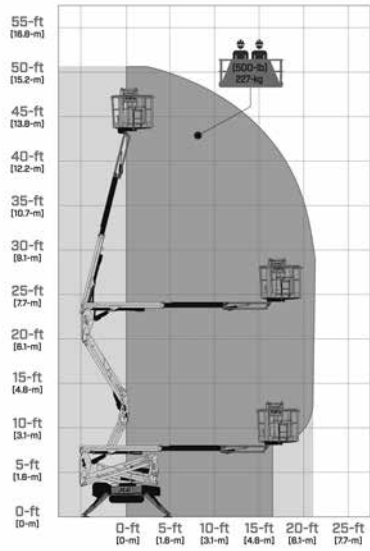
\* Specifications reflect refreshed X600AJ, starting production early 2024. Previous X600AJ models may be available - consult factory for specifications & availability.

\*\*Certain options or country standards increase weight.

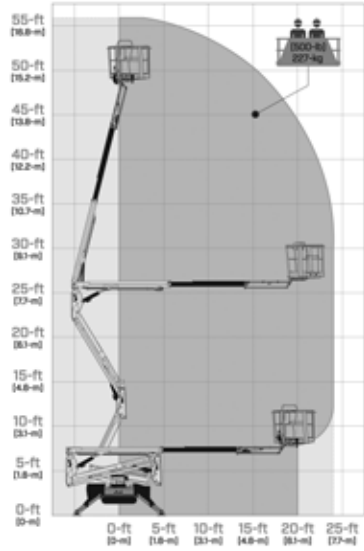
## Bi-Energy:

This option equips the machine with both the Lithium-Ion Battery and Diesel Engine shown above, which allows the operator to choose the best power source to run independently.

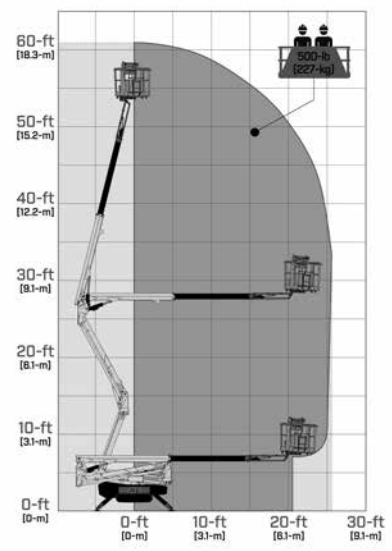
X430AJ



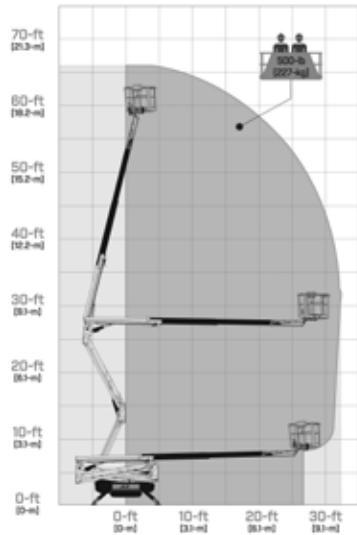
X500AJ



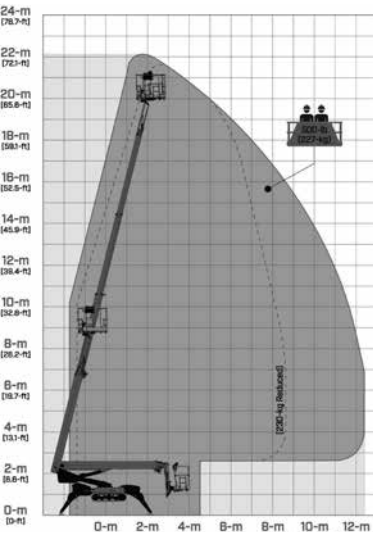
X540AJ



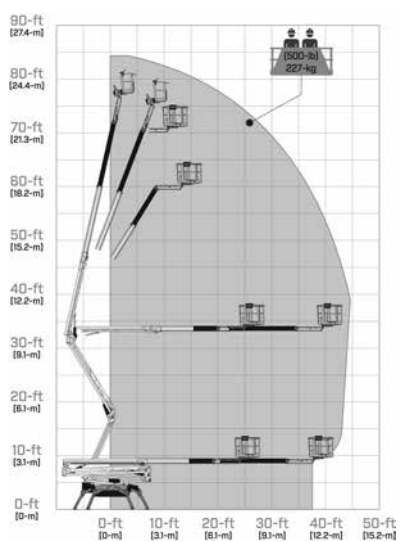
X600AJ



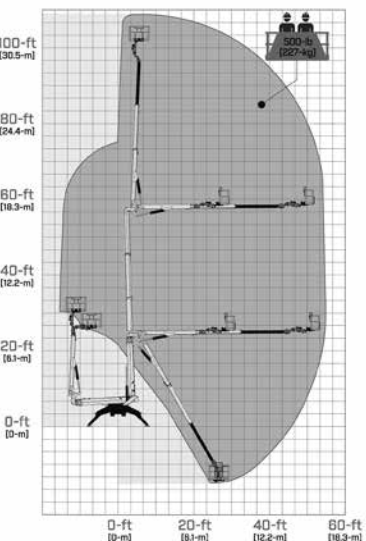
X660SJ



X770AJ



X1000AJ



# E300AJP

## Electric & Hybrid Boom Lifts

### E300AJP

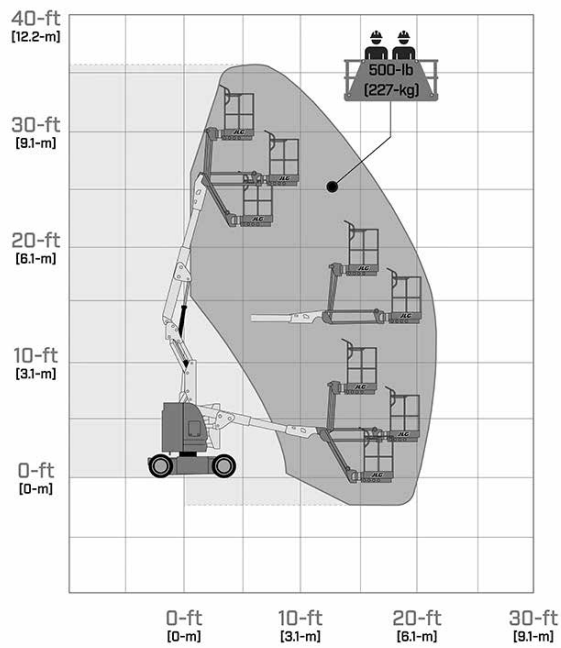
Platform Height	29-ft 5-in / 8.96-m
Horizontal Outreach	20-ft 1-in / 6.12-m
Up and Over Height	13-ft 2-in / 4.01-m
Swing	350 Degrees Non-Continuous
Platform Capacity-Unrestricted	500-lb / 227-kg
Platform Capacity-Restricted	N/A
Platform Rotator	180 Degrees Hydraulic
Jib Length (Range of Articulation)	144 Degrees (+84, -60) Vertical
JibPLUS*	180 Degrees Horizontal
Platform Size	30 x 48-in / 0.76 x 1.22-m
Overall Width	4-ft / 1.22-m
Overall Width—Axles Extended	N/A
Tailswing	Zero
Stowed Height	6-ft 7-in / 2.01-m
Stowed Length	18-ft 10-in / 5.74-m
Stowed Length (Drive)	N/A
Wheelbase	5-ft 5-in / 1.65-m
Ground Clearance	4-in / 10-cm
Weight*	15,400-lb / 6,985-kg
Max. Ground Bearing Pressure**	170 psi / 11.95-kg/cm <sup>2</sup>
Drive Motors	Dual Electric Traction AC
Brakes	Spring Applied Multiple Discs
Drive Speed 2WD/4WD	4.5 mph / 7.2 km/h
Lift/Lower Speed	24/20 seconds
Gradeability 2WD/4WD	25%
Tilt Cut-Out	3 Degrees
Turning Radius (inside) 2WS/4WS	5-ft / 1.52-m
Turning Radius (outside) 2WS/4WS	10-ft 2-in / 3.1-m
Max Wind Speed Rating	28 mph / 12.5 m/s
Axle Oscillation	N/A
Tire Size/Type	25 x 7 x 12-in Non-Marking
Electrical System	48V DC
Hydraulic Motor/Pump	Perm. Magnet Motor/Gear Pump
Hydraulic Reservoir	2.1 gal / 7.95 L
Fuel Tank Capacity	N/A
Diesel Engine	N/A
Dual Fuel Engine	N/A
Batteries	8 x 6V, 305 amp-hr
Battery Charger	85-265VAC 45/60HZ

\*Certain options or country standards increase weight.

\*\*Ground bearing pressure applies to standard tires.

Specifications may change to meet country standards or with addition of optional equipment.

## E300AJP



### SPECIAL FEATURES INCLUDE:

- 4-ft (1.22-m) articulating jib with JibPLUS®
- ATC (Automatic Traction Control) improves performance on uneven surfaces.
- Ultra compact width of only 4-ft (1.22-m).
- Minimum up and down cycle time of only 105 seconds.
- Brushless AC motors.
- SkyGuard SkyLine™
- Load sensing system

# E400AJP NARROW

## Electric & Hybrid Boom Lifts

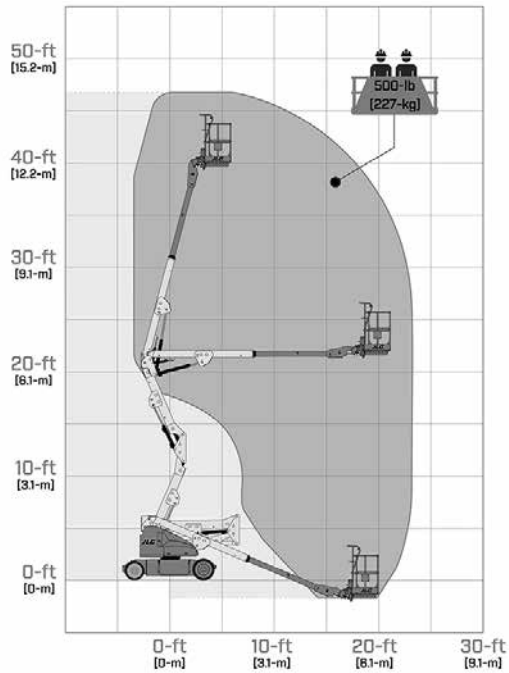
	<b>E400A Narrow</b>	<b>E400AJP Narrow</b>
Platform Height	40-ft / 12.19-m	40-ft / 12.19-m
Horizontal Outreach	21-ft 2-in / 6.45-m	22-ft 5-in / 6.83-m
Up and Over Height	21-ft 6-in / 6.55-m	21-ft 6-in / 6.55-m
Swing	360 Degrees Non-Continuous	360 Degrees Non-Continuous
Platform Capacity-Unrestricted	500-lb / 227-kg	500-lb / 227-kg
Platform Capacity-Restricted	N/A	-
Platform Rotator	180 Degrees Hydraulic	180 Degrees Hydraulic
Jib Length (Range of Articulation)	N/A	144 Degrees (+84, -60) Vertical
JibPLUS*	N/A	180 Degrees Horizontal
Platform Size	30 x 48-in / 0.76 x 1.22-m	30 x 48-in / 0.76 x 1.22-m
Overall Width	4-ft 11-in / 1.5-m	4-ft 11-in / 1.5-m
Overall Width—Axles Extended	N/A	N/A
Tailswing	4-in / 10-cm	4-in / 10-cm
Stowed Height	6-ft 5.75-in / 1.97-m	6-ft 5.75-in / 1.97-m
Stowed Length	18-ft 1-in / 5.51-m	22-ft / 6.71-m
Stowed Length (Drive)	N/A	N/A
Wheelbase	6-ft 7-in / 2.01-m	6-ft 7-in / 2.01-m
Ground Clearance	8.5-in / 22-cm	5-in / 13-cm
Weight*	12,610-lb / 5,720-kg	14,900-lb / 6,759-kg
Max. Ground Bearing Pressure**	95 psi / 6.7-kg/cm <sup>2</sup>	185 psi / 13.0-kg/cm <sup>2</sup>
Drive Motors	Dual Electric Traction AC	Dual Electric Traction AC
Brakes	Spring Applied Multiple Discs	Spring Applied Multiple Discs
Drive Speed 2WD/4WD	4.2 mph / 6.7 km/h	4.2 mph / 6.7 km/h
Lift/Lower Speed	24/23 seconds	24/23 seconds
Gradeability 2WD/4WD	30%	30%
Tilt Cut-Out	3 Degrees	3 Degrees
Turning Radius (Inside) 2WS/4WS	2-ft 10-in / 86-cm	2-ft 10-in / 86-cm
Turning Radius (Outside) 2WS/4WS	10-ft 4-in / 3.15-m	10-ft 4-in / 3.15-m
Max Wind Speed Rating	28 mph / 12.5 m/s	28 mph / 12.5 m/s
Axle Oscillation	N/A	N/A
Tire Size/Type - Front	22 x 6 x 17.5-in Solid Non-Marking	22 x 6 x 17.5-in Solid Non-Marking
Tire Size/Type - Rear	25 x 7 x 12-in Solid Non-Marking	25 x 7 x 12-in Solid Non-Marking
Electrical System	48V DC	48V DC
Hydraulic Motor/Pump	Perm. Magnet/Gear Pump	Perm. Magnet/Gear Pump
Hydraulic Reservoir	4 gal / 15.14 L	4 gal / 15.14 L
Fuel Tank Capacity	N/A	N/A
Diesel Engine	N/A	N/A
Dual Fuel Engine	N/A	N/A
Batteries	8 x 6V, 312 amp-hr	8 x 6V, 312 amp-hr
Battery Charger	85-265VAC 45/60HZ	85-265VAC 45/60HZ

\*Certain options or country standards increase weight.

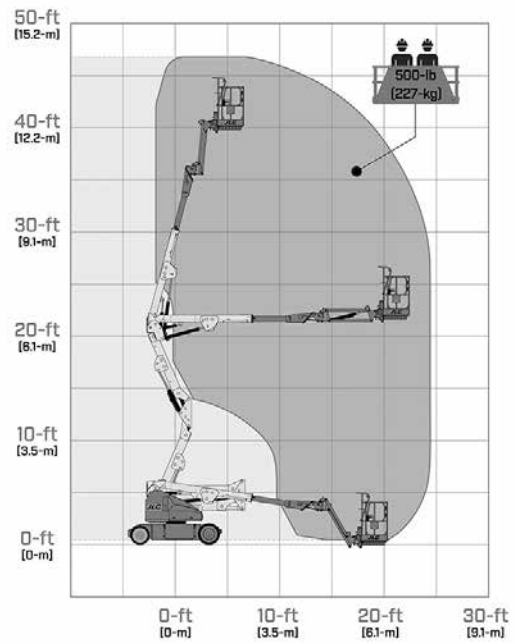
\*\*Ground bearing pressure applies to standard tires.

Specifications may change to meet country standards or with addition of optional equipment.

## E400A NARROW



## E400AJP NARROW



### SPECIAL FEATURES INCLUDE:

- JibPLUS<sup>®</sup> provide access in and around confined work areas.
- 4-ft TI-in (1.5-m) narrow chassis for maneuvering in narrow aisles and confined areas.
- ATC (Automatic Traction Control) improves performance on uneven surfaces.
- Brushless AC motors.
- SkyGuard SkyLine™
- Load sensing system



# E450 SERIES

## Electric Boom Lift

### E450AJ

Platform Height	45-ft / 13.72-m
Horizontal Outreach	23-ft 9-in / 7.24-m
Up and Over Height	25-ft 3-in / 7.7-m
Swing	360 Degrees Non-Continuous
Platform Capacity-Unrestricted	500-lb / 227-kg
Platform Capacity-Restricted	N/A
Platform Rotator	180 Degrees Hydraulic
Jib Length (Range of Articulation)	141 Degrees (+86, -55) Vertical
JibPLUS*	N/A
Platform Size	30 x 60-in / 0.76 x 1.52-m
Overall Width	5-ft 9-in / 1.75-m
Overall Width—Axles Extended	N/A
Tailswing	Zero
Stowed Height	6-ft 7-in / 2.01-m
Stowed Length	21-ft 2-in / 6.45-m
Stowed Length (Drive)	N/A
Wheelbase	6-ft 7-in / 2.01-m
Ground Clearance	8-in / 20-cm
Weight*	14,400-lb / 6,532-kg
Max. Ground Bearing Pressure**	110 psi / 7.6-kg/cm <sup>2</sup>
Drive Motors	Dual Electric Traction AC
Brakes	Spring Applied Multiple Discs
Drive Speed 2WD/4WD	4.5 mph / 7.2 km/h
Lift/Lower Speed	24/23 seconds
Gradeability 2WD/4WD	30%
Tilt Cut-Out	3 Degrees
Turning Radius (Inside) 2WS/4WS	2-ft / 61-cm
Turning Radius (Outside) 2WS/4WS	10-ft 4-in / 3.15-m
Max Wind Speed Rating	28 mph / 12.5 m/s
Axle Oscillation	N/A
Tire Size/Type	240/55 x 17.5 Foam-Filled
Electrical System	48V DC
Hydraulic Motor/Pump	Perm. Magnet Motor/Gear Pump
Hydraulic Reservoir	4 gal 15.14 L
Fuel Tank Capacity	N/A
Diesel Engine	N/A
Dual Fuel Engine	N/A
Batteries	8 x 6V, 375 amp-hr
Battery Charger	85-265VAC 45/60HZ

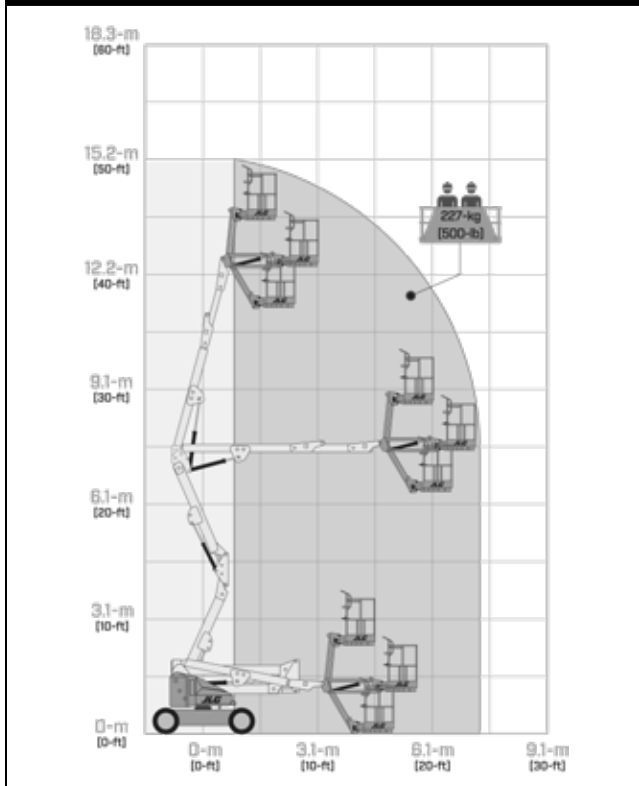
\*Certain options or country standards increase weight.

\*\*Ground bearing pressure applies to standard tires.

Specifications may change to meet country standards or with addition of optional equipment.



## E450AJ



### **SPECIAL FEATURES INCLUDE:**

- ATC (Automatic Traction Control) improves performance on uneven surfaces.
- Jib provides up and over access in confined work areas.
- Brushless AC motors.
- SkyGuard SkyLine™
- Load sensing system

# EC450AJ AND EC520AJ SERIES

## Electric Boom Lift

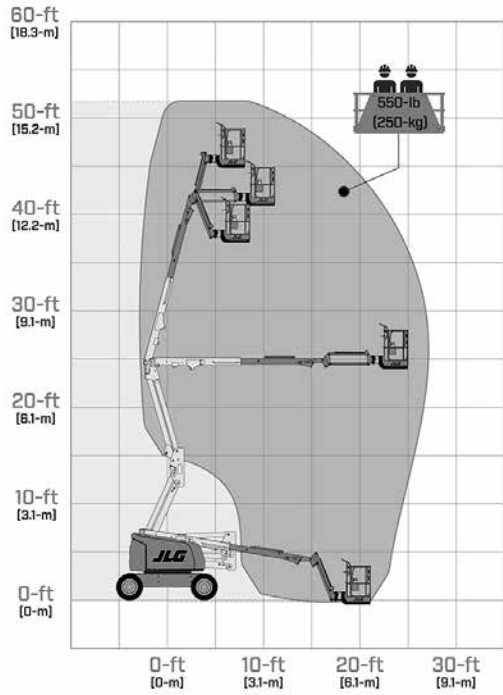
	<b>EC450AJ</b>	<b>EC520AJ</b>
Platform Height	45-ft (13.72-m)	59.05-ft (18-m)
Horizontal Outreach	23-ft 9-in (7.24-m)	52-ft 49-in (16 m)
Up and Over Height	25-ft 3-in (7.7-m)	24-ft (7.30-m)
Swing	360 Degrees Non-Continuous	355 Degrees Non-Continuous
Platform Capacity (unrestricted)	500-lb (227-kg)	5512-lb (250-kg)
Platform Rotator	180 Degrees Hydraulic	180 Degrees Hydraulic
Jib (range of articulation)	141 Degrees (+86, -55) Vertical	145 Degrees (+76 g/ -69 ) Vertical
JibPlus*	N/A	N/A
Platform Size	30 x 60-in (0.76 x 1.52-m)	30 x 60-in (0.76 x 1.83-m)
Overall Width	5-ft 9-in (1.75-m)	5-ft 9-in (1.75-m)
Tailswing	Zero	Zero
Stowed Height	6-ft 7-in (2.01-m)	7.4-ft (2.27-m)
Stowed Length	21-ft 2-in (6.45-m)	25.5-ft (7.77-m)
Wheelbase	6-ft 7-in (2.01-m)	7.7-ft (2.36-m)
Ground Clearance	8-in (20-cm)	1.37-ft (0.42-m)
Weight*	14,400-lb (6,532-kg)	17,603-lb (7,985-kg)
Ground Bearing Pressure**	110 psi (7.6-kg/cm2)	14,55-lb/cm2 (6.6-kg/cm2)
Drive Speed 2WD	4.5 mph (7.2 km/h)	4.5 mph (7.2 km/h)
Gradeability 2WD	30%	30%
Turning Radius (inside)	2-ft (61-cm)	6.76 p-ft (2.06-m)
Turning Radius (outside)	10-ft 4-in (3.15-m)	15,68-ft (4.78-m)
Tire Size/Type	240/55 x 17.5 Foam-Filled	240/55 x 17.5 Foam-Filled
Electrical System	48V DC	48V DC
Batteries	8 x 6V, 370 amp-hr	8 x 6V, 370 amp-hr
Battery Charger	20 amp	20 amp
Drive Motors	Dual Electric Traction AC	Dual Electric Traction AC
Brakes	Spring Applied Multiple Discs	Spring Applied Multiple Discs
Hydraulic Motor/Pump	Perm. Magnet Motor/Gear Pump	Perm. Magnet Motor/Gear Pump
Hydraulic Reservoir	4 gal (15.14 L)	4 gal (15.14 L)

\*Certain options or country standards increase weight.

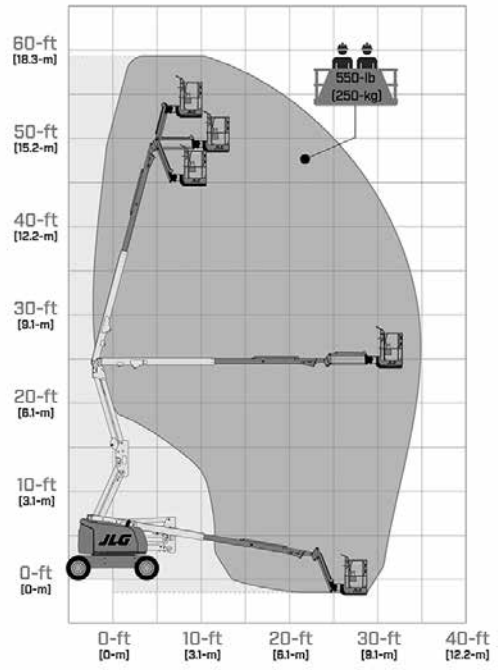
\*\*Ground bearing pressure applies to standard tires.

Specifications may change to meet country standards or with addition of optional equipment.

### EC450AJ



### EC520AJ



# EC600 & H600 SERIES

## Electric & Hybrid Boom Lifts

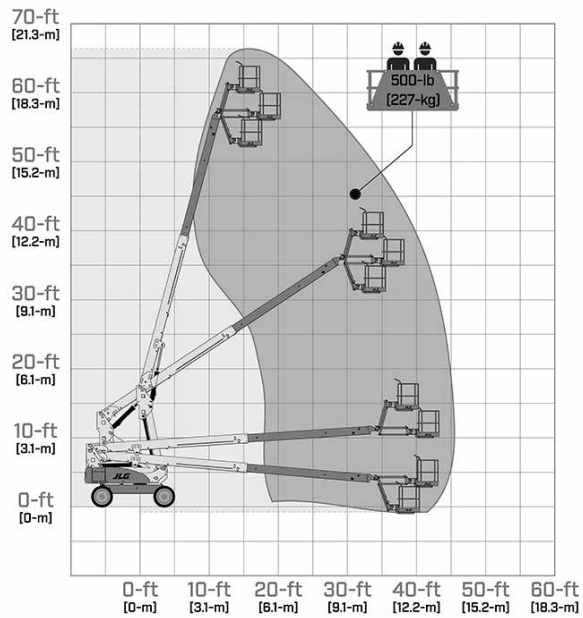
	<b>EC600SJ/H600SJ</b>	<b>EC600SJP/H600SJP</b>
Platform Height	60-ft 3-in / 18.36-m	60-ft 4-in / 18.39-m
Horizontal Outreach	43-ft 3-in / 13.18-m	44-ft 5-in / 13.54-m
Up and Over Height	*Applicable to Articulating ONLY*	*Applicable to Articulating ONLY*
Swing	400 Degrees Non-Continuous	400 Degrees Non-Continuous
Platform Capacity-Unrestricted	500-lb / 227-kg	500-lb / 227-kg
Platform Capacity-Restricted	N/A	N/A
Platform Rotator	180 Degrees Hydraulic	180 Degrees Hydraulic
Jib Length (Range of Articulation)	145 Degrees (+75, -70) Vertical	145 Degrees (+89, -56) Vertical
JibPLUS*	N/A	180 Degrees Horizontal
Platform Size	30 x 72-in / 0.76 x 1.83-m	30 x 72-in / 0.76 x 1.83-m
Overall Width	7-ft 11-in / 2.41-m	7-ft 11-in / 2.41-m
Overall Width—Axles Extended	N/A	N/A
Tailswing	4-ft / 1.22-m	4-ft / 1.22-m
Stowed Height	8-ft 4-in / 2.54-m	8-ft 4-in / 2.54-m
Stowed Length	30-ft 9-in / 9.37-m	33-ft 4-in / 10.16-m
Stowed Length (Drive)	N/A	N/A
Wheelbase	9-ft / 2.74-m	9-ft / 2.74-m
Ground Clearance	10-in / 26-cm	14-in / 36-cm
Weight*	16,710-lb / 7,580-kg	17,210-lb / 7,807-kg
Max. Ground Bearing Pressure**	52 psi / 3.7-kg/cm <sup>2</sup>	51 psi / 3.6-kg/cm <sup>2</sup>
Drive Motors	Dual Electric Traction	Dual Electric Traction
Brakes	Spring Applied Multiple Discs	Spring Applied Multiple Discs
Drive Speed 2WD/4WD	3.0 mph / 4.8 km/h	3.0 mph / 4.8 km/h
Lift/Lower Speed	55/55 seconds	55/55 seconds
Gradeability 2WD/4WD	30%/45%	30%/45%
Tilt Cut-Out	4 Degrees	4 Degrees
Turning Radius (Inside) 2WS/4WS	4-ft / 1.22-m	4-ft / 1.22-m
Turning Radius (Outside) 2WS/4WS	15-ft 2.5-in / 4.64-m	15-ft 2.5-in / 4.64-m
Max Wind Speed Rating	28 mph / 12.5 m/s	28 mph / 12.5 m/s
Axle Oscillation	8-in / 20-cm	8-in / 20-cm
Tire Size/Type	36 x 14-22.5-in Non-Marking Foam-Filled	36 x 14-22.5-in Non-Marking Foam-Filled
Electrical System	48V DC	48V DC
Hydraulic Motor/Pump	Series Wound Motor/Gear Pump	Series Wound Motor/Gear Pump
Hydraulic Reservoir	15 gal / 56.78 L	15 gal / 56.78 L
Fuel Tank Capacity	13 gal / 49.21 L	13 gal / 49.21 L
Diesel Engine	45 Amp Kubota 6.7 hp Diesel Engine	45 Amp Kubota 6.7 hp Diesel Engine
Dual Fuel Engine	N/A	N/A
Batteries	8 x 6V, 415 amp-hr	8 x 6V, 415 amp-hr
Battery Charger	110V 60HZ	110V 60HZ

\*Certain options or country standards increase weight.

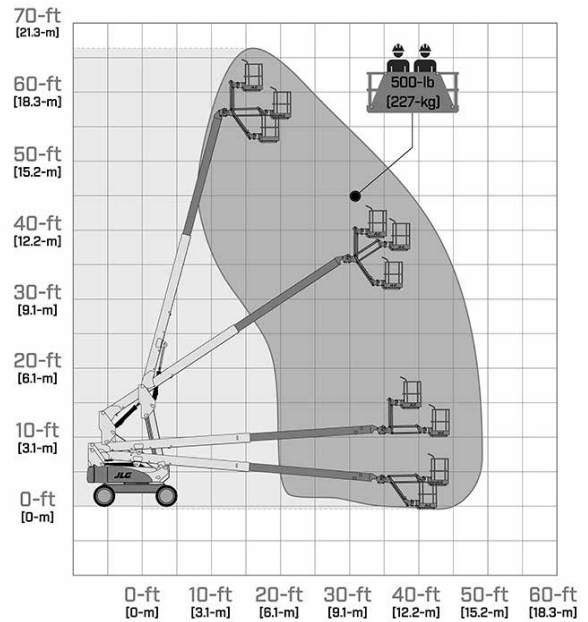
\*\*Ground bearing pressure applies to standard tires.

Specifications may change to meet country standards or with addition of optional equipment.

## EC/H600SJ



## EC/H600SJP



### SPECIAL FEATURES INCLUDE:

- The world's first 60-foot Electric Boom — indoor and outdoor versatility.
- Indoor advantages — Zero emissions, industry-leading noise reduction, non-marking tires and the lowest weight in its class.
- Outdoor advantages — Rugged design with available all-wheel drive, automatic traction control and oscillating axle.
- SkyGuard SkyLine™
- Load sensing system

# H340AJ

## Electric & Hybrid Boom Lifts

### H340AJ

Platform Height	33-ft 10.5-in / 10.33-m
Horizontal Outreach	19-ft 11-in / 6.06-m
Up and Over Height	17-ft / 5.17-m
Swing	355 Degrees Non-Continuous
Platform Capacity-Unrestricted	500-lb / 227-kg
Platform Capacity-Restricted	N/A
Platform Rotator	180 Degrees Hydraulic
Jib Length (Range of Articulation)	4-ft / 1.22-m -139 Degrees (+79, -60)
JibPLUS*	N/A
Platform Size	30 x 60-in / 0.76 x 1.22-m
Overall Width	6-ft 4-in / 1.93-m
Overall Width—Axles Extended	N/A
Tailswing	2-in / 5.08-cm
Stowed Height	6-ft 7-in / 2-m
Stowed Length	18-ft 2-in / 5.52-m, 13-ft 1-in / 3.98-m with Jib Stowed
Stowed Length (Drive)	N/A
Wheelbase	6-ft 2-in / 1.87-m
Ground Clearance	10-in / 26-cm
Weight*	9,860-lb / 4,472-kg
Max. Ground Bearing Pressure**	64 psi / 4.5-kg/cm <sup>2</sup>
Drive Motors	Dual Electric Traction
Brakes	N/A
Drive Speed 2WD/4WD	3.7 mph / 5.95 km/h
Lift/Lower Speed	19/16 seconds
Gradeability 2WD/4WD	45%
Tilt Cut-Out	4 Degrees
Turning Radius (Inside) 2WS/4WS	5-ft / 1.52-m
Turning Radius (Outside) 2WS/4WS	13-ft / 3.96-m
Max Wind Speed Rating	28 mph / 12.5 m/s
Axle Oscillation	4.5-in / 12-cm
Tire Size/Type	265/50 D20 Foam-Filled Lug Tread
Electrical System	48V DC
Hydraulic Motor/Pump	Tandem Gear Pump Set
Hydraulic Reservoir	20.6 gal / 77.9 L
Fuel Tank Capacity	13 gal / 49.2 L
Diesel Engine	Kubota Z482 11.1 hp / 8.3 kW
Dual Fuel Engine	N/A
Batteries	8 x 12V 100 amp-hr AGM
Battery Charger	85-265VAC 45/60HZ

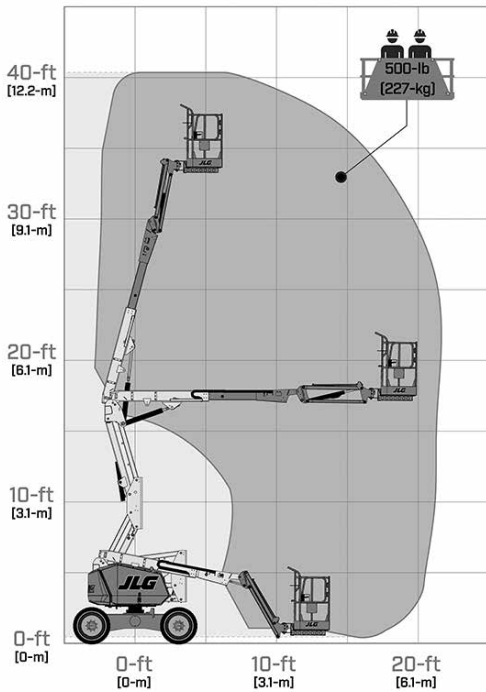
\*Certain options or country standards increase weight.

\*\*Ground bearing pressure applies to standard tires.

Standard with glow plugs.

Specifications may change to meet country standards or with addition of optional equipment.

## H340AJ



### SPECIAL FEATURES INCLUDE:

- Indoor and outdoor use—  
Less noise and lower emissions give access to job sites where traditional diesel machines are not allowed to operate.
- Power and performance—  
Four individually controlled drive motors provide four-wheel drive and exceptional terrainability on par with its diesel counterpart.
- Reduced maintenance—  
Direct AC electric drive reduces the number of hydraulic hoses and fittings as well as the potential for leaks by 40% over hydraulic-powered counterparts.
- SkyGuard SkyLine™
- Load sensing system

# 340AJ & 450 SERIES

## Articulating Boom Lifts

	<b>340AJ</b>	<b>450AJ</b>	<b>450AJ HC3</b>
Platform Height	33-ft 10.5-in / 10.33-m	45-ft / 13.72-m	45-ft / 13.72-m
Horizontal Outreach	19-ft 11-in / 6.06-m	25-ft / 7.62-m	25-ft / 7.62-m
Up and Over Height	17-ft / 5.17-m	24-ft / 7.3-m	24-ft / 7.3-m
Swing	355 Degrees Non-Continuous	355 Degrees Non-Continuous	355 Degrees Non-Continuous
Platform Capacity-Unrestricted	500-lb / 227-kg	550-lb / 250-kg	660-lb / 300-kg
Platform Capacity-Restricted	500-lb / 227-kg	550-lb / 250-kg	750/1,000-lb / 340/454-kg
Platform Rotator	180 Degrees Hydraulic	180 Degrees Hydraulic	180 Degrees Hydraulic
Jib Length (Range of Articulation)	4-ft / 1.22-m / 139 Degrees (+79,-60)	4-ft 1-in / 1.24-m / 145 Degrees (+76,-69)	4-ft 1-in / 1.24-m / 145 Degrees (+76,-69)
JibPLUS*	-	-	-
Platform Size	30 x 60-in / 0.76 x 1.52-m	30 x 72-in / 0.76 x 1.83-m	30 x 72-in / 0.76 x 1.83-m
Overall Width	6-ft 4-in / 1.93-m	7-ft 8.6-in / 2.35-m	7-ft 8.6-in / 2.35-m
Overall Width—Axles Extended	N/A	N/A	N/A
Tailswing	2-in / 5.08-cm	Zero	Zero
Stowed Height	6-ft 7-in / 2-m	7-ft 5.3-in / 2.27-m	7-ft 5.3-in / 2.27-m
Stowed Length	18-ft 2-in / 5.52-m / 13-ft 2-in / 4.02-m with Jib Stowed	21-ft 6.9-in / 6.57-m	21-ft 6.9-in / 6.57-m
Stowed Length (Drive)	N/A	N/A	N/A
Wheelbase	6-ft 2-in / 1.87-cm	7-ft 9-in / 2.36-m	7-ft 9-in / 2.36-m
Ground Clearance	10-in / 23.7-cm	16.4-in / 41.7-cm	16.4-in / 41.7-cm
Weight*	10,175-lbs / 4,615-kg	14,150-lb / 6,418-kg	16,550-lb / 7,507-kg
Max. Ground Bearing Pressure**	62 psi / 4.3 kg/cm <sup>2</sup>	65 psi / 4.57-kg/cm <sup>2</sup>	76 psi / 5.34-kg/cm <sup>2</sup>
Drive Speed 2WD/4WD	3.1 mph / 4.98 km/h- 2WD Only	4.25 mph / 6.84 km/h	4.25 mph / 6.84 km/h
Lift/Lower Speed	19/13 seconds	23/23 seconds	23/23 seconds
Gradeability 2WD/4WD	45%	45% / 2WD-30%	45%
Tilt Cut-Out	4 Degrees	5 Degrees	5 Degrees
Turning Radius (Inside) 2WS/4WS	5-ft / 1.52-m	6-ft 9-in / 2.06-m	6-ft 9-in / 2.06-m
Turning Radius (Outside)	13-ft / 3.96-m	15-ft 8-in / 4.78-m	15-ft 8-in / 4.78-m
Max Wind Speed Rating	28 mph / 12.5 m/s	28 mph / 12.5 m/s	28 mph / 12.5 m/s
Axle Oscillation	4.5-in / 12-cm	4-in / 10-cm	4-in / 10-cm
Tire Size/Type	265/50 D20 Foam-Filled Lug Tread	33/1550 x 16.5 Foam-Filled Lug Tread	33 x 12 D610 Foam-Filled
Electrical System	12V DC	12V DC	12V DC
Hydraulic Reservoir	20.6 gal / 77.9 L	36 gal / 136.3 L	17.3 gal / 65.5 L
Fuel Tank Capacity	13 gal / 49.21 L	16 gal / 60.6 L	16 gal / 60.6 L
Diesel Engine	Kubota D1105 24.8 hp / 18.5 kW	Deutz D2.9L4 Tier 4 Final 49 hp / 36.4 kW	Deutz D2.9L4 Tier 4 Final 49 hp / 36.4 kW
Dual Fuel Engine	PSI/GM L4 EFI 28.7 hp / 21.4 kW	Kubota WG2503 60hp / 44kW	Kubota WG2503 60hp / 44kW

\*Certain options or country standards increase weight.

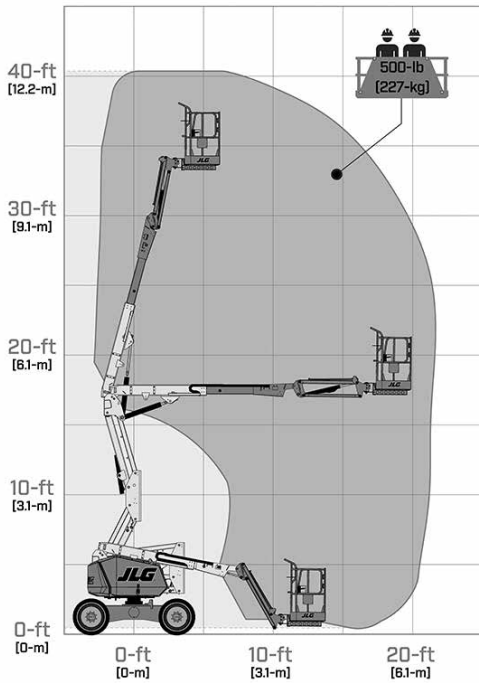
\*\*Ground bearing pressure applies to standard tires.

Standard with glow plugs.

Specifications may change to meet country standards or with addition of optional equipment.



## 340AJ



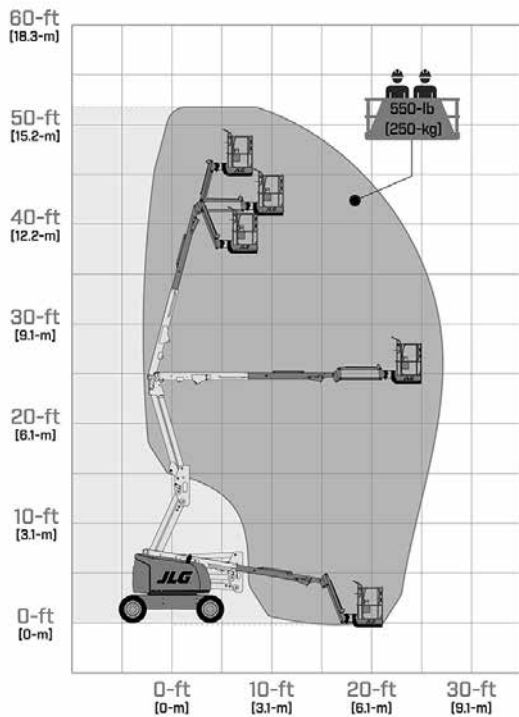
## SPECIAL FEATURES INCLUDE:

- Lighter weight 340AJ provides for more efficient performance over a wide range of applications and reduced transport costs.
- Increased work envelope with optimum up and over clearance and horizontal outreach.
- Improved rough terrain capabilities with standard 4-wheel drive (45-ft models), oscillating axle and 45% gradeability.
- Enhanced electrical and hydraulic systems minimize wiring and hoses, reducing wear and maintenance.
- SkyGuard SkyLine™
- Load sensing system

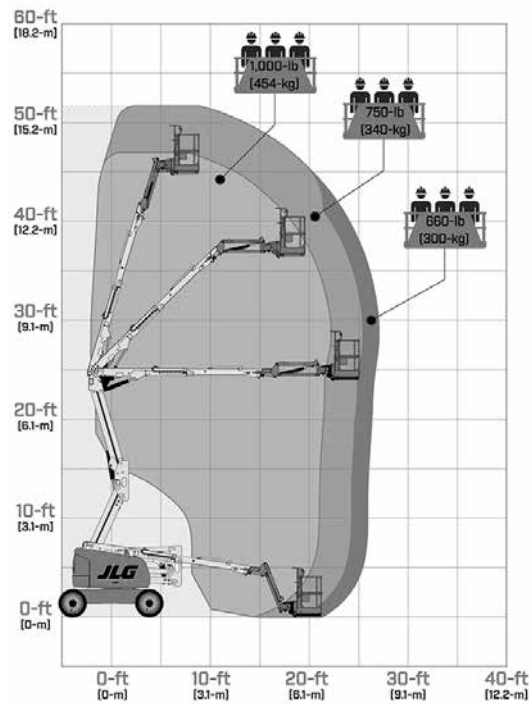
**3 Capacity Zones - Each rated for up to 3 occupants + tools/materials**

**HC3**

## 450AJ



## 450AJ HC3



# 520 Series Articulating Boom Lifts

## 520AJ

Working Height	18 m
Working Outreach	10.65 m
Up and Over Height	7.3 m
Swing	355 Degrees Non-Continuous
Platform Capacity	250 kg
Platform Rotator	0.76 x 1.83 m
Jib (range of articulation)	144 Degrees (+76, -69)
A. Platform Size	0.76 m x 1.83 m
B. Overall Width	2.35 m
C. Tailswing	Zero
D. Stowed Height	2.27 m
E. Stowed Length	7.77 m
F. Wheelbase	2.36 m
G. Ground Clearance	0.42 m
Weight*	7,985 kg
Max. Ground Bearing Pressure**	6.6 kg/cm <sup>2</sup>
Drive Speed	6.8 km/hr
Gradeability	<b>45%</b>
Turning Radius (inside)	2.06 m
Turning Radius (outside)	4.78 m
Axle Oscillation	10 cm
Tire Size/Type	33/1550 x 16.5 Foam Filled tyres
Diesel Engine	Deutz D2.3 L3 Stage IIIA 36.4 kW
Fuel Tank Capacity	60.5 L
Hydraulic Reservoir	136 L
Auxiliary Power	12V-DC

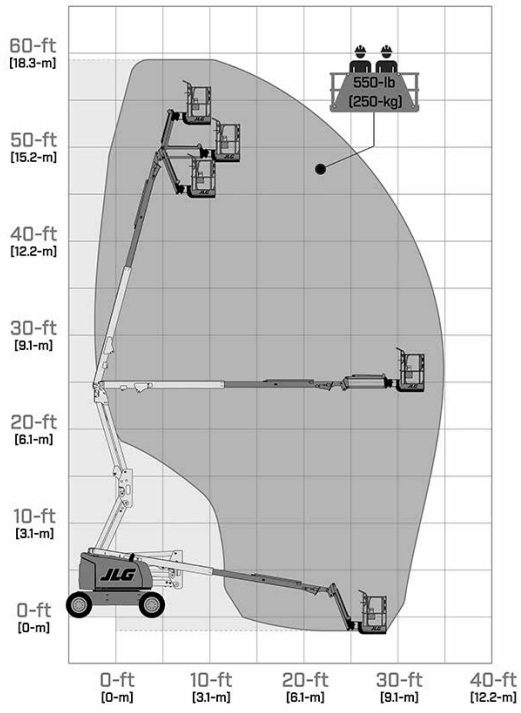
\*Certain options or country standards increase weight.

\*\*Ground bearing pressure applies to standard tires.

† Standard with glow plugs.

Specifications may change to meet country standards or with addition of optional equipment.\*

# 520AJ



# 600 SERIES

## Articulating Boom Lifts

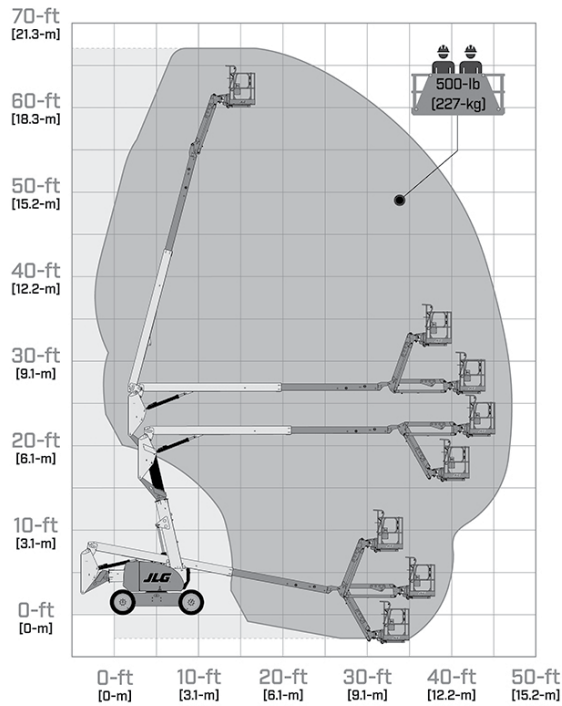
	<b>600AJ</b>	<b>600AJ Narrow</b>	<b>600AJ HC3</b>
Platform Height	60-ft 7-in / 18.47-m	60-ft 7-in / 18.47-m	60-ft / 18.3-m
Horizontal Outreach	39-ft 9-in / 12.1-m	39-ft 9-in / 12.1-m	40-ft 6.9-in / 12.37-m
Up and Over Height	26-ft 7-in / 8.1-m	26-ft 7-in / 8.1-m	26-ft 6.4-in / 8.1-m
Swing	360 Degrees Continuous	360 Degrees Continuous	360 Degrees Continuous
Platform Capacity-Unrestricted	500-lb / 227-kg	500-lb / 227-kg	660-lb / 300-kg
Platform Capacity-Restricted	500-lb / 227-kg	500-lb / 227-kg	750/1000-lb / 340/454-kg
Platform Rotator	180 Degrees Hydraulic	180 Degrees Hydraulic	180 Degrees Hydraulic
Jib Length (Range of Articulation)	130 Degrees (+70,-60)	130 Degrees (+70,-60)	130 Degrees (+70,-60)
JibPLUS*	-	-	-
Platform Size	36 x 96-in / 0.91 x 2.44-m	36 x 96-in / 0.91 x 2.44-m	36 x 96-in / 0.91 x 2.44-m
Overall Width	8-ft 2-in / 2.48-m	7-ft / 2.14-m	8-ft 2.2-in / 2.49-m
Overall Width—Axles Extended	N/A	N/A	N/A
Tailswing	Zero	5-ft 6-in / 1.6-m	Zero
Stowed Height	8-ft 4-in / 2.54-m	8-ft 4-in / 2.54-m	8-ft 5.5-in / 2.58-m
Stowed Length	28-ft 11.5-in / 8.83-m	28-ft 11.5-in / 8.83-m	30-ft / 9.14-m
Stowed Length (Drive)	N/A	N/A	N/A
Wheelbase	8-ft / 2.44-m	8-ft / 2.44-m	8-ft 1.9-in / 2.48-m
Ground Clearance	12-in / 30-cm	12-in / 30-cm	11.8-in / 29-cm
Weight*	22,691-lb / 10,292-kg	24,200-lb / 10,977-kg	26,057-lb / 11,819-kg
Max. Ground Bearing Pressure**	75 psi / 5.5-kg/cm <sup>2</sup>	90 psi / 6.2-kg/cm <sup>2</sup>	90 psi / 6.2-kg/cm <sup>2</sup>
Drive Speed 2WD/4WD	4.25 mph / 6.8 km/h	4.25 mph / 6.8 km/h	4.01 mph / 6.45 km/h-4WD
Lift/Lower Speed	26/26 seconds	26/26 seconds	26/26 seconds
Gradeability 2WD/4WD	30%/45%	30%/45%	30%/45%
Tilt Cut-Out	4 Degrees	3 Degrees	5 Degrees
Turning Radius (inside) 2WS/AWS	10-ft 11-in / 3.33-m / 4-ft 7-in / 1.41-m	5-ft 7-in / 1.7-m-2WS	7-ft 1-in / 2.15-m-2WS
Turning Radius (outside)	17-ft 8-in / 5.38-m / 9-ft 7-in / 2.92-m	11-ft 2-in / 3.4-m-2WS	16-ft 11.3-in / 5.17-m-2WS
Max Wind Speed Rating	28 mph / 12.5 m/s	28 mph / 12.5 m/s	28 mph / 12.5 m/s
Axle Oscillation	8-in / 20-cm	8-in / 20-cm	7.2-in / 18.3-cm
Tire Size/Type	IN355/55D-6.25 Low Profile/Foam-Filled	IN355/55D-6.25 Low Profile/Foam-Filled	IN355/55D-6.25 Low Profile/Foam-Filled
Electrical System	12V DC	12V DC	12V DC
Hydraulic Reservoir	30.6 gal / 115.83 L	30.6 gal / 115.83 L	30.6 gal / 115.83 L
Fuel Tank Capacity	30 gal / 113.56 L	30 gal / 113.56 L	30 gal / 113.56 L
Diesel Engine	Deutz TD 2.9L T4F 48.8 hp / 36.4 kW	Deutz TD 2.9L T4F 48.8 hp / 36.4 kW	Deutz TD 2.9L T4F 48.8 hp / 36.4 kW
Dual Fuel Engine	Ford DF 2.5L 84 hp / 62 kW	Ford DF 2.5L 84 hp / 62 kW	Ford DF 2.5L 84 hp / 62 kW

\*Certain options or country standards increase weight.

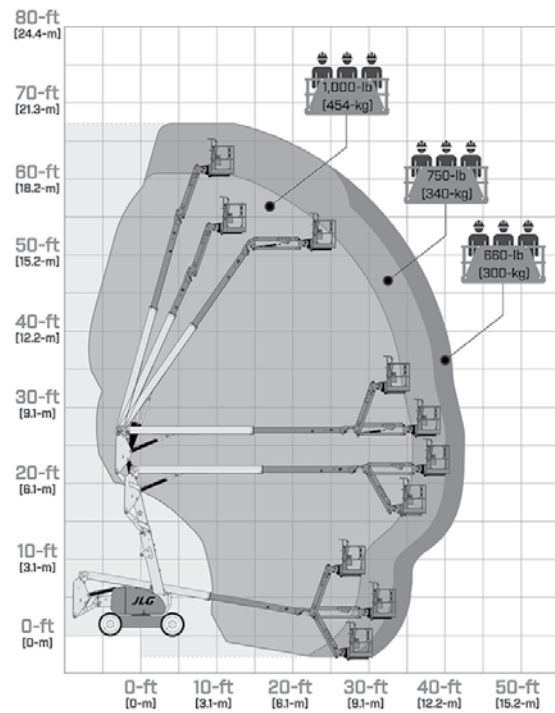
\*\*Ground bearing pressure apply to standard tires.

Specifications may change to meet country standards or with addition of optional equipment.

## 600AJ



## 600AJ HC3



### SPECIAL FEATURES INCLUDE:

- Platform controls with one-hand control of lift and swing.
- Advanced boom design provides optimal reach envelope with zero tailswing.
- Swing-out engine tray for ease of access.
- Oscillating axle and 4-wheel drive for superior traction.
- Revolutionary WorkStation in the Sky® options and accessories.
- SkyGuard SkyLine™
- Load sensing system

# HC3

**3 Capacity Zones - Each rated for up to 3 occupants + tools/materials**



# 800AJ

## Articulating Boom Lifts

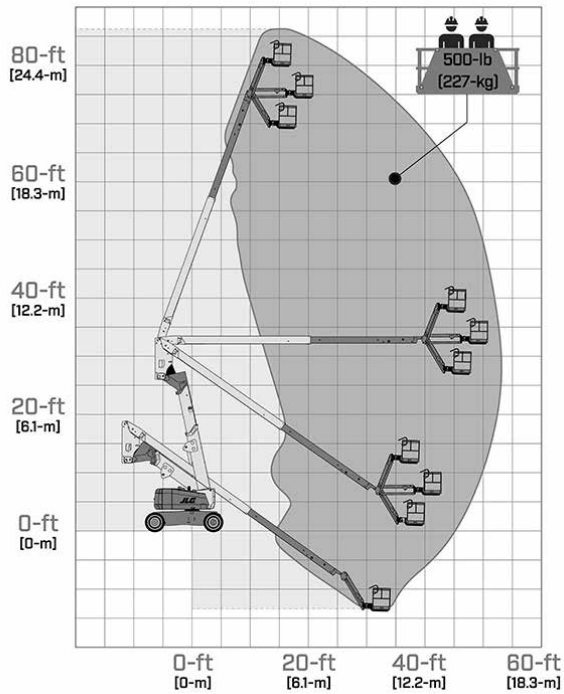
	<b>800AJ</b>	<b>800AJ HC3</b>
Platform Height	80-ft / 24.38-m	80-ft 4.4-in / 24.5-m
Horizontal Outreach	51-ft 10-in / 15.8-m	52-ft 3.8-in / 15.9-m
Up and Over Height	32-ft 1-in / 9.78-m	32-ft 5.1in / 9.9-m
Swing	360 Degrees Continuous	360 Degrees Continuous
Platform Capacity-Unrestricted	500-lb / 227-kg	660-lb / 300-kg
Platform Capacity-Restricted	N/A	750 / 1000-lb / 340 / 454-kg
Platform Rotator	180 Degrees Hydraulic	180 Degrees Hydraulic
Jib Length (Range of Articulation)	6-ft / 1.83-m / 130 Degrees (+70,-60)	6-ft / 1.83-m / 130 Degrees (+70,-60)
JibPLUS*	-	-
Platform Size	36 x 72-in / 0.91 x 1.82-m	36 x 72-in / 0.91 x 1.82-m
Overall Width	8-ft 2-in / 2.48-m	8-ft 1.5-in / 2.48-m
Overall Width—Axles Extended	N/A	N/A
Tailswing	2-ft 6-in / 76-cm	2-ft 5-in / 74-cm
Stowed Height	9-ft 10-in / 3.0-m	9-ft 9.1-in / 2.97-m
Stowed Length	36-ft 6-in / 11.13-m	36-ft 9.9-in / 11.22-m
Stowed Length (Drive)	N/A	N/A
Wheelbase	10-ft / 3.05-m	10-ft / 3.05-m
Ground Clearance	11-in / 28-cm	11-in / 28-cm)
Weight*	34,738-lb / 15,757-kg	37,530-lb / 17,023-kg
Max. Ground Bearing Pressure**	76 psi / 5.3-kg/cm2	76 psi / 5.3-kg/cm2
Drive Speed 2WD/4WD	3.6 mph / 5.8 kmh	3.6 mph / 5.8 kmh
Lift/Lower Speed	45/45 seconds	45/45 seconds
Gradeability 2WD/4WD	30%/45%	30%/45%
Tilt Cut-Out	4 Degrees	4 Degrees
Turning Radius (Inside) 2WS/4WS	12-ft 6-in / 3.8-m / 6-ft / 1.83-m	10-ft 2.9-in / 3.12-m
Turning Radius (Outside)	19-ft 8-in / 6.02-m / 11-ft 7-in / 3.53-m	21-ft 6.2-in / 6.56-m
Max Wind Speed Rating	28 mph / 12.5 m/s	28 mph / 12.5 m/s
Axle Oscillation	8-in / 20-cm	8-in / 20-cm
Tire Size/Type	18-625 Foam-Filled	18-625 Foam-Filled
Electrical System	12V DC	12V DC
Hydraulic Reservoir	40 gal / 151.42 L	40 gal / 151.42 L
Fuel Tank Capacity	39 gal / 147.63 L	39 gal / 147.63 L
Diesel Engine	Deutz TD2.9L4 Tier 4 Final 67 hp / 50 kW	Deutz TD2.9L4 Tier 4 Final 67 hp / 50 kW
Dual Fuel Engine	Ford MSG425-DF 84 hp / 62.6 kW	Ford MSG425-DF 84 hp / 62.6 kW

\*Certain options or country standards increase weight.

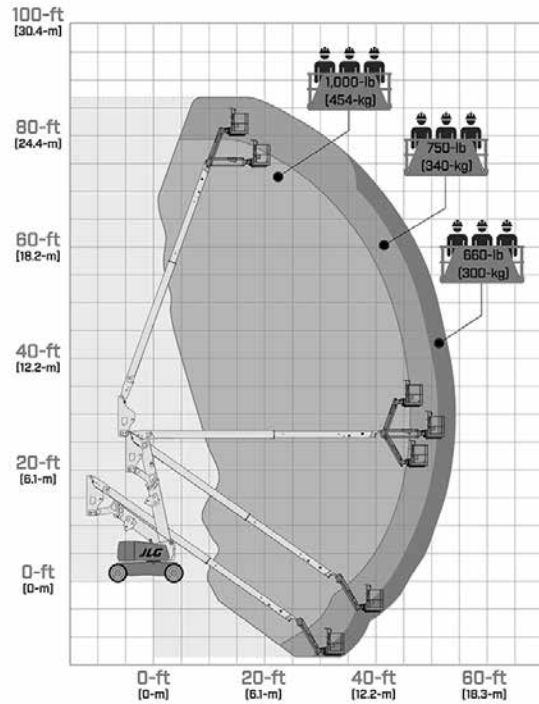
\*\*Ground bearing pressure applies to standard tires.

Specifications may change to meet country standards or with addition of optional equipment.

## 800AJ



## 800AJ HC3



### SPECIAL FEATURES INCLUDE:

- Exclusive QuikStik® boom — 50 seconds from ground to full elevation.
- Optional oscillating axle and 4-wheel drive for superior traction.
- Narrow 8-ft 2-in (2.48-m) chassis for improved access.
- WorkStation in the Sky® options and accessories.
- SkyGuard SkyLine™
- Load sensing system



# HC3

**3 Capacity Zones - Each rated for up to 3 occupants + tools/materials**

# ULTRA SERIES

## Articulating Boom Lifts

	1250AJP	1500AJP
Platform Height	125-ft 8-in / 38.3-m	150-ft / 45.72-m
Horizontal Outreach	63-ft 2-in / 19.25-m	75-ft / 22.86-m
Up and Over Height	60-ft 6-in / 18.44-m	60-ft 4-in / 18.4-m
Swing	360 Degrees Continuous	360 Degrees Continuous
Platform Capacity-Unrestricted	500-lb / 227-kg	600-lb / 272-kg
Platform Capacity-Restricted <sup>1</sup>	1,000-lb / 454-kg	1,000-lb / 454-kg
Platform Rotator	180 Degrees Hydraulic	180 Degrees Hydraulic
Jib Length (Range of Articulation)	8-ft / 2.44-m / 130 Degrees (+75,-55)	8-ft / 2.4-m / 131 Degrees (+75,-55)
JibPLUS <sup>*</sup>	125 Degrees Hydraulic	180 Degrees Hydraulic
Platform Size	36-in x 96-in / 0.91 x 2.44-m	36 x 96-in / .91 x 2.44-m
Overall Width	8-ft 2-in / 2.49-m	8-ft 1.5-in / 2.5-m
Overall Width—Axles Extended	12-ft 6-in / 3.81-m	16-ft 6-in / 5-m
Tailswing	9-ft 3-in / 2.84-m	2-ft 5-in / 0.7-m
Stowed Height	9-ft 11-in / 3.02-m	10-ft 2-in / 3.1-m
Stowed Length	37-ft 7-in / 11.45-m	39-ft 8-in / 12.09-m
Stowed Length (Drive)	47-ft 6-in / 14.48-m	49-ft 8-in / 15.1-m
Wheelbase	12-ft 6-in / 3.81-m	15-ft / 4.6-m extended 17-ft 1.50-in / 5.22-m retracted
Ground Clearance		
— Axle	12-in / 30-cm	15-in / 38-cm
— Chassis	25.5-in / 65-cm	15.75-in / 40-cm
Weight <sup>*</sup>	44,000-lb / 19,958-kg	57,380-lb / 26,027-kg
Max. Ground Bearing Pressure <sup>**</sup>	100 psi / 7.03-kg/cm <sup>2</sup>	122.5 psi / 8.4-kg/cm <sup>2</sup>
Drive Speed 2WD/4WD	3.25 mph / 5.2 km/h	2.8 mph / 4.5 km/h
Lift/Lower Speed	57/59 seconds	70/70 seconds
Gradeability 2WD/4WD	45%	40%
Tilt Cut-Out	5 Degrees	5 Degrees
Turning Radius (Inside) 2WS/4WS	14-ft 5-in / 4.39-m / Axles Retracted 8-ft / 2.44-m / Axles Extended	23-ft 4-in / 7.11-m / Axles Retracted 7-ft 6-in / 2.28-m / Axles Extended
Turning Radius (Outside)	22-ft 6-in / 6.86-m / Axles Retracted/ 19-ft 4-in / 5.89-m / Axles Extended	31-ft 3-in / 9.52-m / Axles Retracted/ 21-ft 8-in / 6.6-m / Axles Extended
Max Wind Speed Rating	28 mph / 12.5 m/s	28 mph / 12.5 m/s
Axle Oscillation	8-in / 20-cm	N/A
Crab Steer Ratio <sup>2</sup>	1:1	1:1
Tire Size/Type	445/50D710 Foam-Filled	445/50D710 Foam-Filled
Electrical System	12V DC	12V DC
Hydraulic Reservoir	53 gal / 200.63 L	93 gal / 352 L
Fuel Tank Capacity	31 gal / 117.35 L	45 gal / 170 L
Diesel Engine	Deutz TCD2.9L4 74.2 hp / 55.4 kW Tier 4 Final	Deutz TCD 3.6L 99.8 hp / 74.45 kW
Dual Fuel Engine	N/A	N/A

<sup>\*</sup>Certain options or country standards increase weight

<sup>\*\*</sup>Ground bearing pressure applies to standard tires.

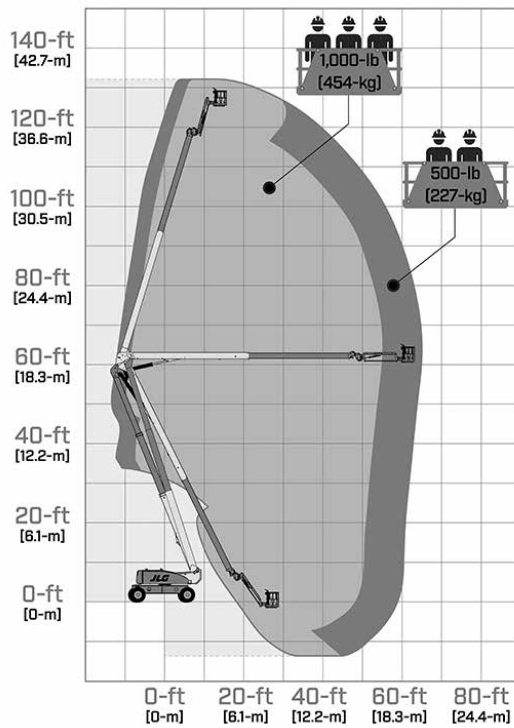
1. Capacity is limited to 500-lb when JibPLUS<sup>®</sup> is swung off-center (600-lb on 1500AJP).

2. Ratio of forward travel to lateral travel.

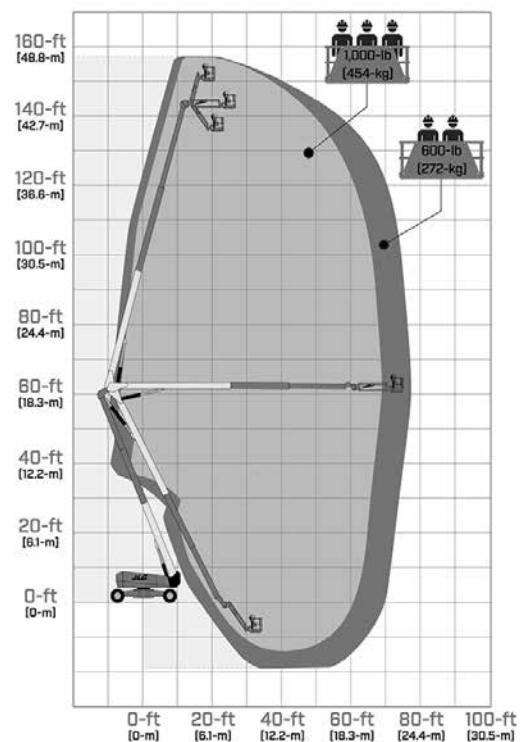
Specifications may change to meet country standards or with addition of optional equipment.



## 1250AJP



## 1500AJP



### SPECIAL FEATURES INCLUDE:

- Huge Work Envelope — up to 2.6 million cubic foot work envelope means you can access otherwise inaccessible areas.
- Best Mobility in Class — Tightest turning radius, best crab-steer ratio, drive-out extendable axles and the only oscillating axle (1250AJP only) in its class means you can take these big boom lifts where no others can go.
- WorkStation in the Sky® options and accessories.
- Exclusive QuikStik® Boom — 115 seconds from full elevation to ground (180 seconds for the 1500AJP). 100,000 psi steel in the boom helps you get more work done with higher platform capacities and built-in power tools.
- SkyGuard SkyLine™
- Load sensing system

# 400 SERIES

## Telescopic Boom Lifts

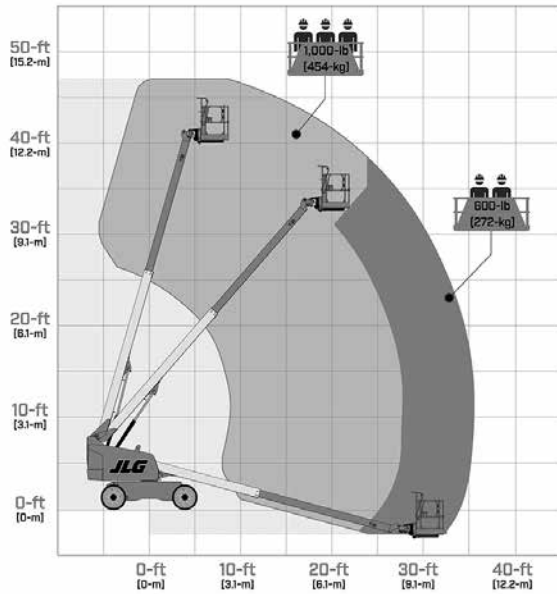
	<b>400S</b>	<b>400S HC3</b>	<b>460SJ</b>	<b>460SJ HC3</b>
Platform Height	40-ft / 12.36-m	40-ft / 12.19-m	46-ft / 14.05-m	46-ft / 14.05-m
Horizontal Outreach	33-ft 3-in / 10-m	33-ft 7-in / 10.23-m	39-ft / 12-m	39-ft / 12-m
Up and Over Height	N/A	N/A	N/A	N/A
Swing	360 Degrees Continuous	360 Degrees Continuous	360 Degrees Continuous	360 Degrees Continuous
Platform Capacity-Unrestricted	600-lb / 272-kg	660-lb / 300-kg	600-lb / 272-kg	660-lb / 300-kg
Platform Capacity-Restricted	1,000-lb / 454-kg	750/1,000-lb / 340/454-kg	600-lb / 272-kg	750/1,000-lb / 340/454-kg
Platform Rotator	180 Degrees Hydraulic	180 Degrees Hydraulic	180 Degrees Hydraulic	N/A
Jib Length (Range of Articulation)	130 Degrees (+70,-60)	N/A	6-ft / 1.83-m	6-ft / 1.83-m
JibPLUS*	N/A	N/A	180 Degrees Horizontal	N/A
Platform Size	36 x 96-in / 0.91 x 2.44-m	36 x 96-in / 0.91 x 2.44-m	36 x 96-in / 0.91 x 2.44-m	36 x 96-in / 0.91 x 2.44-m
Overall Width	7-ft 6.8-in / 2.31-m	7-ft 6.8-in / 2.31-m	7-ft 6.8-in / 2.31-m	7-ft 6.8-in / 2.31-m
Overall Width—Axles Extended	N/A	N/A	N/A	N/A
Tailswing	2-ft 10-in / 86-cm	2-ft 10-in / 86-cm	2-ft 10-in / 86-cm	3-ft 0.5-in / 93-cm
Stowed Height	8-ft 1-in / 2.47-m	8-ft 1-in / 2.47-m	8-ft 1-in / 2.47-m	8-ft 1-in / 2.47-m
Stowed Length	24-ft 11-in / 7.6-m	24-ft 11-in / 7.6-m	29-ft 3-in / 8.91-m	29-ft 8.2-in / 9.10-m
Stowed Length (Drive)	N/A	N/A	N/A	N/A
Wheelbase	7-ft 9.5-in / 2.37-m	7-ft 9.5-in / 2.37-m	7-ft 9.5-in / 2.37-m	7-ft 9.5-in / 2.37-m
Ground Clearance	12-in / 30-cm	12-in / 30-cm	12-in / 30-cm	12-in / 30-cm
Weight*	13,640-lb / 6,187-kg	15,040-lb / 6,822-kg	16,600-lb / 7,530-kg	20,516-lb / 9,306-kg
Max. Ground Bearing Pressure**	58 psi / 4.00-kg/cm <sup>2</sup>	65 psi / 4.57-kg/cm <sup>2</sup>	69 psi / 4.76-kg/cm <sup>2</sup>	971 psi / 6.8-kg/cm <sup>2</sup>
Drive Speed 2WD/4WD	4.25 mph / 6.8 km/h	4.25 mph / 6.8 km/h	4.25 mph / 6.8 km/h	4.25 mph / 6.8 km/h
Lift/Lower Speed	34/34 seconds	33/33 seconds	34/34 seconds	34/34 seconds
Gradeability 2WD/4WD	45%	45%	45%	45%
Tilt Cut-Out	5 Degrees	5 Degrees	5 Degrees	5 Degrees
Slope Leveling Capacity	N/A	N/A	N/A	N/A
Slope Leveling Capacity	N/A	N/A	N/A	N/A
Turning Radius (Inside) 2WS/4WS	6-ft 5-in / 2.0-m	6-ft 9.4-in / 2.07-m	6-ft 6.9-in / 2.0-m	6-ft 8.7-in / 2.05-m
Turning Radius (Outside) 2WS/4WS	15-ft 8-in / 4.8-m	15-ft 8-in / 4.8-m	15-ft 10.5-in / 4.8-m	15-ft 8.6-in / 4.8-m
Max Wind Speed Rating	28 mph / 12.5 m/s	28 mph / 12.5 m/s	28 mph / 12.5 m/s	28 mph / 12.5 m/s
Axle Oscillation	-	4.4-in / 0.11-m	-	-
Tire Size/Type	12 x 16.5 Foam-Filled Lug Tread	12 x 16.5 Foam-Filled	12 x 16.5 Foam-Filled Lug Tread	33 X 12 Foam-Filled
Electrical System	12V DC	12V DC	12V DC	12V DC
Hydraulic Reservoir	36 gal / 136 L	36 gal / 136 L	36 gal / 136 L	36 gal / 136 L
Fuel Tank Capacity	22 gal / 83.3 L	22 gal / 83.3 L	22 gal / 83.3 L	22 gal / 83.3 L
Diesel Engine	Deutz D2.9L4 Tier 4 Final 49 hp / 36.4 kW	Deutz D2.9L4 Tier 4 Final 49 hp / 36.4 kW	Deutz D2.9L4 Tier 4 Final 49 hp / 36.4 kW	Deutz D2.9L4 Tier 4 Final 49 hp / 36.4 kW
Dual Fuel Engine	Kubota DF WG2503 61 hp / 45.5 kW	Kubota DF WG2503 61 hp / 45.5 kW	Kubota DF WG2503 61 hp / 45.5 kW	Kubota DF WG2503 61 hp / 45.5 kW

\*Certain options or country standards increase weight.

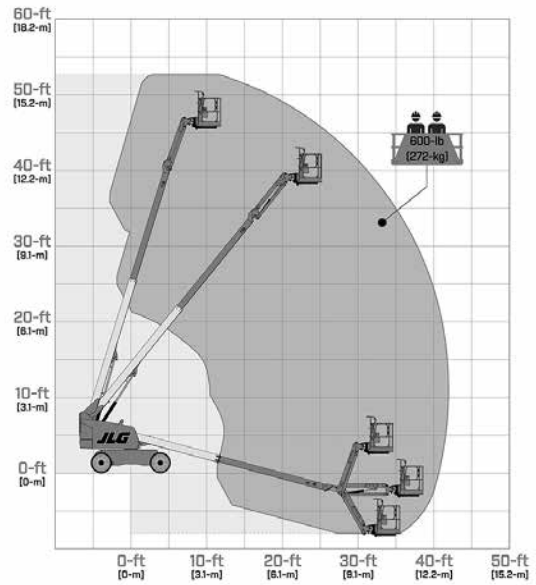
\*\*Ground bearing pressure applies to standard tires.

Specifications may change to meet country standards or with addition of optional equipment.

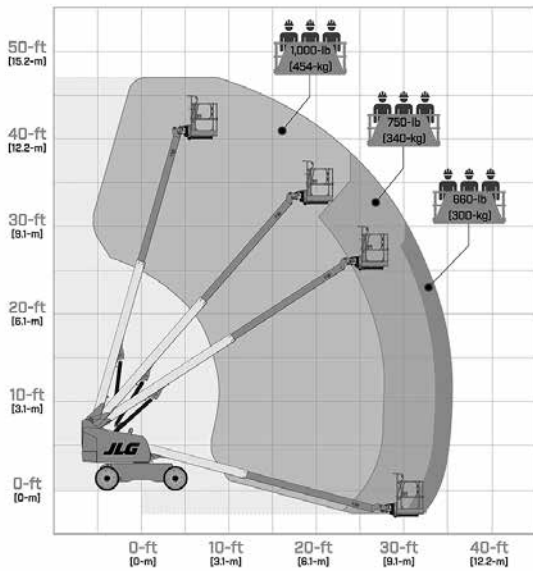
## 400S



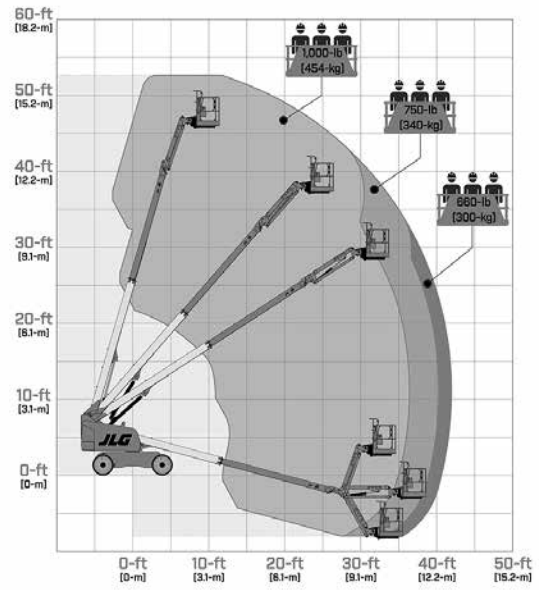
## 460SJ



## 400S HC3



## 460SJ HC3



### SPECIAL FEATURES INCLUDE:

- 45% gradeability (2WD-30%).
- 100% more platform capacity than most competitors.
- Revolutionary WorkStation in the Sky® options and accessories.
- Up to 39-ft (12-m) horizontal reach.
- SkyGuard SkyLine™
- Load sensing system

# HC3

**3 Capacity Zones - Each rated for up to 3 occupants + tools/materials**

# 400 CRAWLER SERIES

## Telescopic Boom Lifts

	<b>400SC</b>	<b>460SJC</b>
Platform Height	39-ft 6.5-in / 12.05-m	45-ft 5.4-in / 13.88-m
Horizontal Outreach	33-ft / 10-m	39-ft / 12-m
Up and Over Height	N/A	N/A
Swing	360 Degrees Continuous	360 Degrees Continuous
Platform Capacity-Unrestricted	600-lb / 272-kg	600-lb / 272-kg
Platform Capacity-Restricted	1,000-lb / 454-kg	600-lb / 272-kg
Platform Rotator	180 Degrees Hydraulic	180 Degrees Hydraulic
Jib Length (Range of Articulation)	N/A	6-ft / 1.83-m
JibPLUS*	N/A	N/A
Platform Size	36 x 96-in / 0.91 x 2.44-m	36 x 96-in / 0.91 x 2.44-m
Overall Width	7-ft 4-in / 2.23-m	7-ft 4-in / 2.23-m
Overall Width—Axles Extended	N/A	N/A
Tailswing	3.14-ft / 0.96-m	3.14-ft / 0.96-m
Stowed Height	7-ft 7.5-in / 2.32-m	7-ft 7.2-in / 2.32-m
Stowed Length	24-ft 10-in / 7.57-m	29-ft 3-in / 8.9-m
Stowed Length (Drive)	N/A	N/A
Wheelbase	7-ft 5-in / 2.25-m	7-ft 5-in / 2.25-m
Ground Clearance	16-in / 41-cm	16-in / 41-cm
Weight*	14,559-lb / 6,603-kg	17,998-lb / 8,164-kg
Max. Ground Bearing Pressure**	5.21 psi / .366-kg/cm <sup>2</sup>	8.35 psi / .587-kg/cm <sup>2</sup>
Drive Speed 2WD/4WD	1.6 mph / 2.57 km/h	1.8 mph / 2.9 km/h
Lift/Lower Speed	33/33 seconds	34/34 seconds
Gradeability 2WD/4WD	51%	51%
Tilt Cut-Out	5 Degrees	5 Degrees
Slope Leveling Capacity	N/A	N/A
Slope Leveling Capacity	N/A	N/A
Turning Radius (inside) 2WS/4WS	Zero	Zero
Turning Radius (outside) 2WS/4WS	Zero	Zero
Max Wind Speed Rating	28 mph / 12.5 m/s	28 mph / 12.5 m/s
Axle Oscillation	-	-
Type of Tracks***	Rubber	Rubber
Track Width	15.7-in / 40-cm	15.7-in / 40-cm
Electrical System	12V DC	12V DC
Hydraulic Reservoir	36 gal / 136.27 L	36 gal / 136.27 L
Fuel Tank Capacity	22 gal / 83.3 L	31 gal / 117 L
Diesel Engine	Deutz D2.9L4 Tier 4 Final 49 hp / 36.4 kW	Deutz D2.9L4 Tier 4 Final 49 hp / 36.4 kW
Dual Fuel Engine	-	-

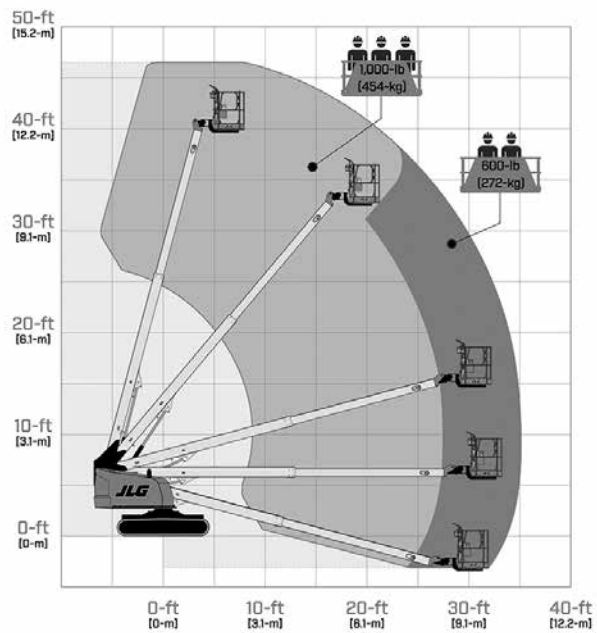
\*Certain options or country standards increase weight.

\*\*Ground bearing pressure applies to standard tracks.

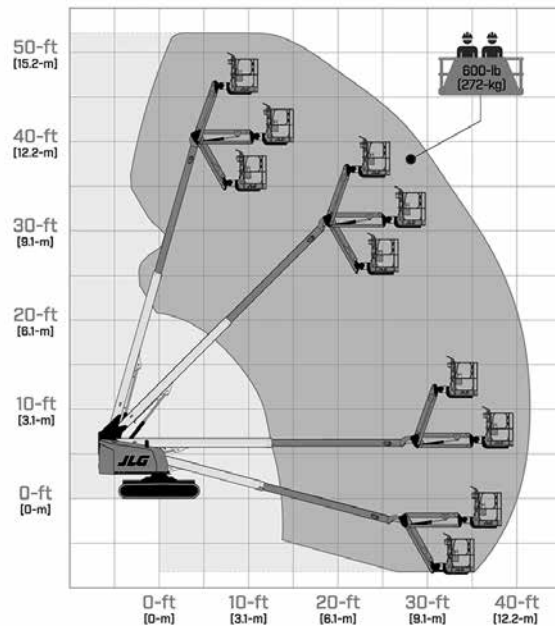
\*\*\*Optional non-marking rubber and steel tracks available.

Specifications may change to meet country standards or with addition of optional equipment.

## 400SC



## 460SJC



### SPECIAL FEATURES INCLUDE:

- Better mobility with a zero turning radius.
- Increased flotation with a choice of tracks.
- Ease of control with a unique single-joystick control.
- 1,000-lb (454-kg) dual capacity (400SC).
- Articulating Jib provides reach versatility.
- SkyGuard SkyLine™
- Load sensing system

# 600 SERIES

## Telescopic Boom Lifts

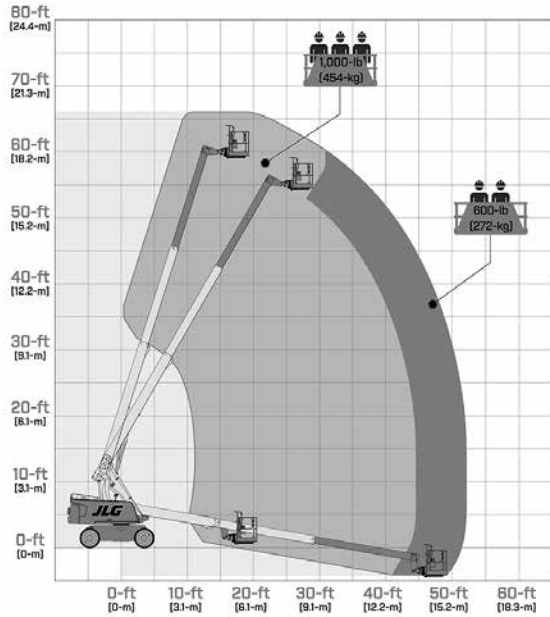
	<b>600S</b>	<b>600S HC3</b>	<b>660SJ</b>	<b>660SJ HC3</b>
Platform Height	59-ft 8-in / 18.18-m	59-ft 8-in / 18.18-m	65-ft 8-in / 20.02-m	65-ft 8-in / 20.02-m
Horizontal Outreach	50-ft 2-in / 15.29-m	50-ft 2-in / 15.29-m	57-ft 1-in / 17.40-m	57-ft 1-in / 17.40-m
Up and Over Height	N/A	N/A	N/A	N/A
Swing	360 Degrees Continuous	360 Degrees Continuous	360 Degrees Continuous	360 Degrees Continuous
Platform Capacity-Unrestricted	600-lb / 272-kg	660-lb / 300-kg	550-lb / 250-kg	660-lb / 300-kg
Platform Capacity-Restricted	1,000-lb / 454-kg	750/1,000-lb / 340/454-kg	750-lb / 340-kg	750/1,000-lb / 340/454-kg
Platform Rotator	160 Degrees Hydraulic	160 Degrees Hydraulic	180 Degrees Hydraulic	180 Degrees Hydraulic
Jib Length (Range of Articulation)	N/A	N/A	6-ft / 1.83-m / 132 Degrees (+71,-61)	6-ft / 1.83-m / 131 Degrees
JibPLUS*	N/A	N/A	N/A	N/A
Platform Size	36 x 96-in / 0.91 x 2.44-m	36 x 96-in / 0.91 x 2.44-m	36 x 96-in / 0.91 x 2.44-m	36 x 96-in / 0.91 x 2.44-m
Overall Width	8-ft 2-in / 2.48-m	8-ft 2-in / 2.48-m	8-ft 2-in / 2.48-m	8-ft 2-in / 2.48-m
Overall Width—Axles Extended	N/A	N/A	N/A	N/A
Tailswing	4-ft / 1.22-m	4-ft / 1.22-m	4-ft / 1.22-m	4-ft / 1.22-m
Stowed Height	8-ft 2.4-in / 2.50-m	8-ft 2.4-in / 2.50-m	8-ft 2.4-in / 2.50-m	8-ft 5.4-in / 2.58-m
Stowed Length	28-ft 7-in / 8.71-m	28-ft 7-in / 8.71-m	35-ft 4.7-in / 10.79-m	33-ft 0.4-in / 10.01-m
Stowed Length (Drive)	N/A	N/A	N/A	N/A
Wheelbase	8-ft 2.7-in / 2.51-m	8-ft 2.7-in / 2.51-m	8-ft 2.7-in / 2.51-m	8-ft 2.7-in / 2.51-m
Ground Clearance	11.3-in / 29-cm	11.3-in / 29-cm	11.3-in / 29-cm	11.3-in / 29-cm
Weight*	21,647-lb / 9,819-kg	22,900-lb / 10,387-kg	25,341-lb / 11,494-kg	29,281-lb / 13,281-kg
Max. Ground Bearing Pressure**	83 psi / 5.84-kg/cm <sup>2</sup>	84 psi / 5.9-kg/cm <sup>2</sup>	86 psi / 6-kg/cm <sup>2</sup>	112 psi / 7.9-kg/cm <sup>2</sup>
Drive Speed 2WD/4WD	3.8 mph / 6.3 km/h	3.8 mph / 6.3 km/h	3.8 mph / 6.3 km/h	3.8 mph / 6.3 km/h
Lift/Lower Speed	55/55 seconds	55/55 seconds	55/55 seconds	55/55 seconds
Gradeability 2WD/4WD	45%	45%	45%	45%
Tilt Cut-Out	5 Degrees	5 Degrees	5 Degrees	5 Degrees
Slope Leveling Capacity	N/A	N/A	N/A	N/A
Slope Leveling Capacity	N/A	N/A	N/A	N/A
Turning Radius (Inside) 2WS/4WS	9-ft 7-in / 2.92-m / 5-ft 3-in / 1.61-m	9-ft 6.5-in / 2.91-m	9-ft 7-in / 2.92-m / 5-ft 3-in / 1.61-m	9-ft 6.3-in / 2.90-m / 5-ft 3.9-in / 1.62-m
Turning Radius (Outside) 2WS/4WS	19-ft 7-in / 5.96-m / 12-ft 8-in / 3.87-m	18-ft 3.9-in / 5.59-m	19-ft 7-in / 5.96-m / 12-ft 8-in / 3.87-m	18-ft 3.9-in / 5.59-m / 9-ft 11-in / 3.02-m
Max Wind Speed Rating	28 mph / 12.5 m/s	28 mph / 12.5 m/s	28 mph / 12.5 m/s	28 mph / 12.5 m/s
Axle Oscillation	8-in / 20-cm	7.4-in / 19-cm	8-in / 20-cm	7.4-in / 19-cm
Tire Size/Type	355/55D625 Foam-Filled Lug Tread	355/55D625 Foam-Filled Lug Tread	355/55D625 Foam-Filled Lug Tread	355/55D625 Foam-Filled Lug Tread
Electrical System	12V DC	12V DC	12V DC	12V DC
Hydraulic Reservoir	34 gal / 129 L	34 gal / 129 L	34 gal / 129 L	34 gal / 129 L
Fuel Tank Capacity	31 gal / 117 L	31 gal / 117 L	31 gal / 117 L	31 gal / 117 L
Diesel Engine	Deutz D2.9L4 48.8 hp / 36.4 kW Tier 4 Final	Deutz D2.9L4 48.8 hp / 36.4 kW Tier 4 Final	Deutz D2.9L4 48.8 hp / 36.4 kW Tier 4 Final	Deutz D2.9L4 48.8 hp / 36.4 kW Tier 4 Final
Dual Fuel Engine	Ford MSG425-DF 84 hp / 62.6 kW	Ford MSG425-DF 84 hp / 62.6 kW	Ford MSG425-DF 84 hp / 62.6 kW	Ford MSG425-DF 84 hp / 62.6 kW

\*Certain options or country standards increase weight.

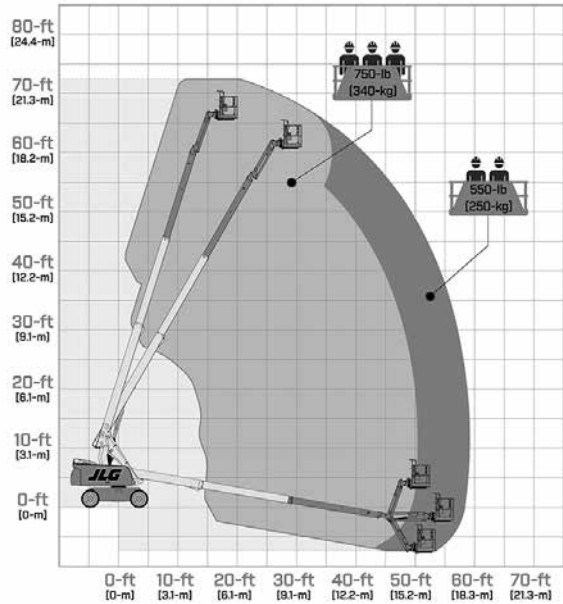
\*\*Ground bearing pressure applies to standard tires.

Specifications may change to meet country standards or with addition of optional equipment.

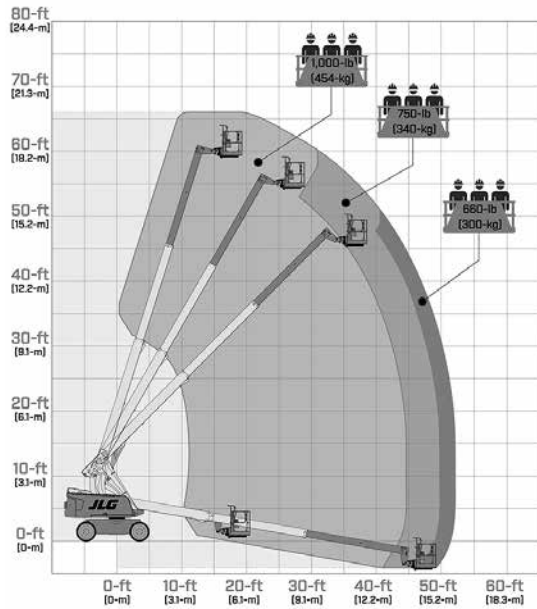
## 600S



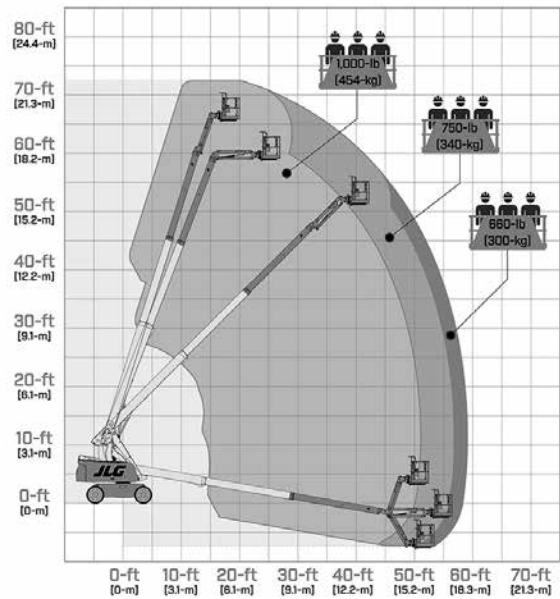
## 660SJ



## 600S HC3



## 660SJ HC3



### SPECIAL FEATURES INCLUDE:

- The best selling series of boom lifts in the world.
- Easy-to-identify platform controls for reduced operator training time.
- New and improved articulating jibs permit greater reach versatility.
- SkyGuard SkyLine™
- Load sensing system

# HC3

**3 Capacity Zones - Each rated for up to 3 occupants + tools/materials**

# 600 CRAWLER SERIES

## Telescopic Boom Lifts

### 660SJC

Platform Height	65-ft 7-in / 19.99-m
Horizontal Outreach	57-ft 0.6-in / 17.39-m
Up and Over Height	N/A
Swing	360 Degrees Continuous
Platform Capacity-Unrestricted	550-lb / 249-kg
Platform Capacity-Restricted	750-lb / 340-kg
Platform Rotator	180 Degrees Hydraulic
Jib Length (Range of Articulation)	132 Degrees (+71,-61)
JibPLUS*	N/A
Platform Size	36 x 96-in / 0.91 x 2.44-m
Overall Width	8-ft 2-in / 2.49-m
Overall Width—Axles Extended	N/A
Tailswing	4-ft / 1.22-m
Stowed Height	8-ft 1.2-in / 2.47-m
Stowed Length	35-ft 4.7-in / 10.79-m
Stowed Length (Drive)	N/A
Wheelbase	8-ft 9.9-in / 2.69-m
Ground Clearance	16.7-in / 40-cm
Weight*	27,620-lb / 12,528-kg
Max. Ground Bearing Pressure**	11.3 psi / 0.8-kg/cm <sup>2</sup>
Drive Speed 2WD/4WD	1.6 mph / 2.6 km/h
Lift/Lower Speed	55/55 seconds
Gradeability 2WD/4WD	55%
Tilt Cut-Out	5 Degrees
Slope Leveling Capacity	N/A
Slope Leveling Capacity	N/A
Turning Radius (Inside) 2WS/4WS	Zero
Turning Radius (Outside) 2WS/4WS	Zero
Max Wind Speed Rating	28 mph / 12.5 m/s
Axle Oscillation	-
Type of Tracks***	Steel
Track Width	20-in / 51-cm
Electrical System	12V DC
Hydraulic Reservoir	34 gal / 129 L
Fuel Tank Capacity	31 gal / 117 L
Diesel Engine	Deutz TD2.9L4 Tier 4 Final 67 hp / 50 kW
Dual Fuel Engine	-

\*Certain options or country standards increase weight.

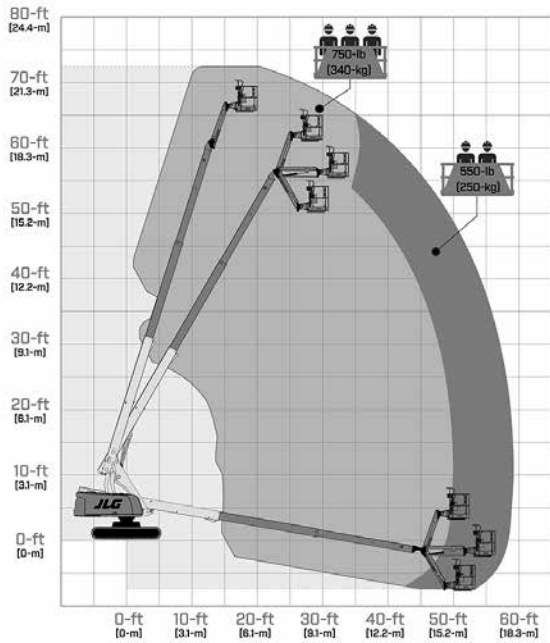
\*\*Ground bearing pressure applies to standard tracks.

\*\*\*Available with detachable rubber pads.

Specifications may change to meet country standards or with addition of optional equipment.



## 660SJC



### SPECIAL FEATURES INCLUDE:

- Better mobility with a zero turning radius.
- Increased flotation with a choice of tracks.
- Ease of control with a unique single-joystick control.
- SkyGuard SkyLine™
- Load sensing system

# 670SJ SELF-LEVELING Telescopic Boom Lift

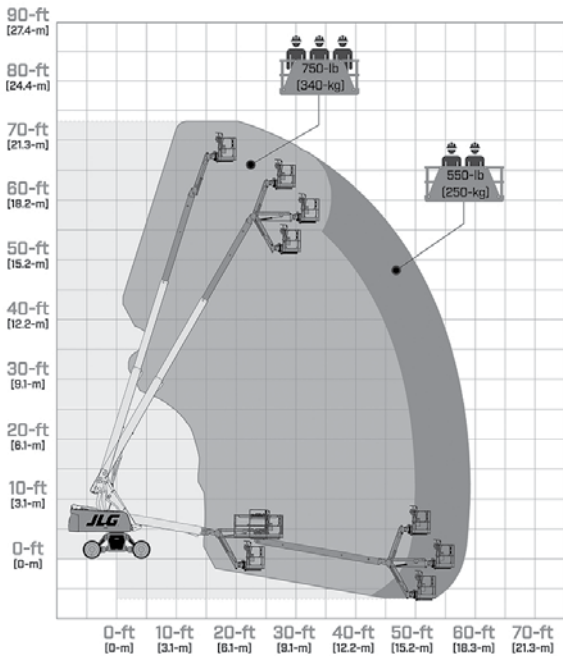
## 670SJ

Platform Height	66-ft 10-in / 20.36-m
Horizontal Outreach	57-ft 1-in / 17.40-m
Up and Over Height	N/A
Swing	360 Degrees Continuous
Platform Capacity-Unrestricted	550-lb / 250-kg
Platform Capacity-Restricted	750-lb / 340-kg
Platform Rotator	180 Degrees Hydraulic
Jib Length (Range of Articulation)	6-ft / 1.83-m / 132 Degrees (+71,-61)
JibPLUS*	N/A
Platform Size	36 x 96-in / 0.91 x 2.44-m
Overall Width	8-ft 2.4-in / 2.50-m
Overall Width—Axles Extended	N/A
Tailswing	4-ft / 1.22-m
Stowed Height	9-ft 1.2-in / 2.74-m
Stowed Length	35-ft 5-in / 10.68-m
Stowed Length (Drive)	N/A
Wheelbase	-
Ground Clearance	1-ft 1-in / 33-cm
Weight*	25,341-lb / 11,494-kg
Max. Ground Bearing Pressure**	85 psi / 5.98-kg/cm <sup>2</sup>
Drive Speed 2WD/4WD	3.8 mph / 6.1 km/hr
Lift/Lower Speed	55/55 seconds
Gradeability 2WD/4WD	45%
Tilt Cut-Out	10 Degrees
Slope Leveling Capacity	10 Degrees Fore/Aft
Slope Leveling Capacity	10 Degrees Side to Side
Turning Radius (Inside) 2WS/4WS	8-ft 4.4-in / 2.55-m
Turning Radius (Outside) 2WS/4WS	18-ft 7.6-in / 5.68-m
Max Wind Speed Rating	28 mph / 12.5 m/s
Axle Oscillation	-
Tire Size/Type	Foam Filled
Electrical System	12V DC
Hydraulic Reservoir	34 gal / 129 L
Fuel Tank Capacity	31 gal / 117 L
Diesel Engine	Deutz T4F 67 hp 50kW
Dual Fuel Engine	-

\* Certain options or country standards increase weight

\*\*Ground bearing pressure applies to standard tires.

## 670SJ



### THE SELF-LEVELING BOOM TRAVERSES SUBSTANTIALLY UNEVEN GROUND AT FULL HEIGHT TO PROVIDE:

- Automatic Self Leveling, to enable safe "drive while at height" productivity with the ability to get closer to the job quicker.
- Maximized machine utilization with unparalleled 10 degree slope capability to avoid repositioning trial and error.
- Unprecedented platform stability that may reduce worker fatigue and increase operator environmental awareness.
- Reduction of costs, risks, and time wasted in cribbing, grading, or renting larger equipment.
- Minimization of objects bouncing around and out of platform for a more efficient, safer jobsite.
- Fully ANSI 92.20 compliant with an industry leading allowable operating slope.



# 800 SERIES

## Telescopic Boom Lifts

	<b>800S</b>	<b>800S HC3</b>	<b>860SJ</b>	<b>860SJ HC3</b>
Platform Height	80-ft / 24.38-m	80-ft / 24.38-m	86-ft / 26.21-m	86-ft / 26.21-m
Horizontal Outreach	71-ft / 21.64-m	71-ft 3-in / 21.78	75-ft / 22.86-m	74-ft 8.9-in / 22.78-m
Up and Over Height	N/A	N/A	N/A	N/A
Swing	360 Degrees Continuous	360 Degrees Continuous	360 Degrees Continuous	360 Degrees Continuous
Platform Capacity-Unrestricted	500-lb / 227-kg	500-lb / 227-kg	500-lb / 227-kg	500-lb / 227-kg
Platform Capacity-Restricted <sup>1</sup>	1,000-lb / 454-kg	750/1000-lb / 340/454-kg	750-lb / 340-kg	750/1000-lb / 340/454-kg
Platform Rotator	180 Degrees Hydraulic	180 Degrees Hydraulic	180 Degrees Hydraulic	180 Degrees Hydraulic
Jib Length (Range of Articulation)	N/A	N/A	6-ft / 1.83-m / 131 Degrees (+70.5,-60.5)	6-ft / 1.83-m / 131 Degrees (+70.5,-60.5)
JibPLUS <sup>*</sup>	N/A	N/A	N/A	N/A
Platform Size	36 x 96-in / 0.91 x 2.44-m	36 x 96-in / 0.91 x 2.44-m	36 x 96-in / 0.91 x 2.44-m	36 x 96-in / 0.91 x 2.44-m
Overall Width	8-ft 2-in / 2.49-m	8-ft 2-in / 2.49-m	8-ft 2-in / 2.49-m	8-ft 2-in / 2.49-m
Overall Width—Axles Extended	N/A	N/A	N/A	N/A
Tailswing	4-ft 8-in / 1.42-m	4-ft 8-in / 1.42-m	4-ft 8-in / 1.42-m	4-ft 8-in / 1.42-m
Stowed Height	9-ft 11-in / 3.02-m	9-ft 8.1-in / 2.95-m	9-ft 8.1-in / 2.95-m	9-ft 8.1-in / 2.95-m
Stowed Length	37-ft 5.9-in / 11.43-m	37-ft 6-in / 11.43-m	40-ft / 12.19-m	40-ft / 12.19-m
Stowed Length (Drive)	N/A	N/A	N/A	N/A
Wheelbase	10-ft / 3.05-m	10-ft / 3.05-m	10-ft / 3.05-m	10-ft / 3.05-m
Ground Clearance	11-in / 28-cm	11-in / 28-cm	11-in / 28-cm	11-in / 28-cm
Weight*	34,150-lb / 15,490-kg	33,030-lb / 14,982-kg	36,840-lb / 16,710-kg	38,040-lb / 17,255-kg
Max. Ground Bearing Pressure**	72 psi / 5.06-kg/cm <sup>2</sup>	72 psi / 5.06-kg/cm <sup>2</sup>	81 psi / 5.69-kg/cm <sup>2</sup>	104.6 psi / 7.4-kg/cm <sup>2</sup>
Drive Speed 2WD/4WD	3.5 mph / 5.6 km/h	4.13 mph / 6.65 km/h	3.5 mph / 5.6 km/h	4.13 mph / 6.65 km/h
Lift/Lower Speed	110/110 seconds	110/110 seconds	110/110 seconds	110/110 seconds
Gradeability 2WD/4WD	25%--45%	25%--45%	25%--45%	25%--45%
Tilt Cut-Out	4 Degrees	4 Degrees	4 Degrees	4 Degrees
Slope Leveling Capacity	N/A	N/A	N/A	N/A
Slope Leveling Capacity	N/A	N/A	N/A	N/A
Turning Radius (Inside) 2WS/AWS	12-ft 6-in / 3.8-m	14-ft 7.7-in / 4.5-m	12-ft 6-in / 3.8-m	14-ft 7.7-in / 4.5-m
Turning Radius (Outside) 2WS/AWS	19-ft 8-in / 6.02-m	21-ft 7-in / 6.6-m	19-ft 8-in / 6.02-m	21-ft 7-in / 6.6-m
Max Wind Speed Rating	28 mph / 12.5 m/s	28 mph / 12.5 m/s	28 mph / 12.5 m/s	28 mph / 12.5 m/s
Axle Oscillation	6.8-in / 17-cm	6.8-in / 17-cm	6.8-in / 17-cm	6.8-in / 17-cm
Tire Size/Type	18-625 Foam-Filled Lug Tread	15-625 Foam-Filled Lug Tread	15-625 Foam-Filled Lug Tread	15-625 Foam-Filled Lug Tread
Electrical System	12V DC	12V DC	12V DC	12V DC
Hydraulic Reservoir	48 gal / 181.7 L	48 gal / 181.7 L	48 gal / 181.7 L	34 gal / 129 L
Fuel Tank Capacity	31 gal / 117.35 L	31 gal / 117.35 L	31 gal / 117.35 L	31 gal / 117.35 L
Diesel Engine	Deutz TD2.9L4 Tier 4 Final 67 hp / 50 kW	Deutz TD2.9L4 Tier 4 Final 67 hp / 50 kW	Deutz TD2.9L4 Tier 4 Final 67 hp / 50 kW	Deutz TD2.9L4 Tier 4 Final 67 hp / 50 kW
Dual Fuel Engine	Ford MSG425-DF 84 hp / 62.6 kW	Ford MSG425-DF 84 hp / 62.6 kW	Ford MSG425-DF 84 hp / 62.6 kW	Ford MSG425-DF 84 hp / 62.6 kW

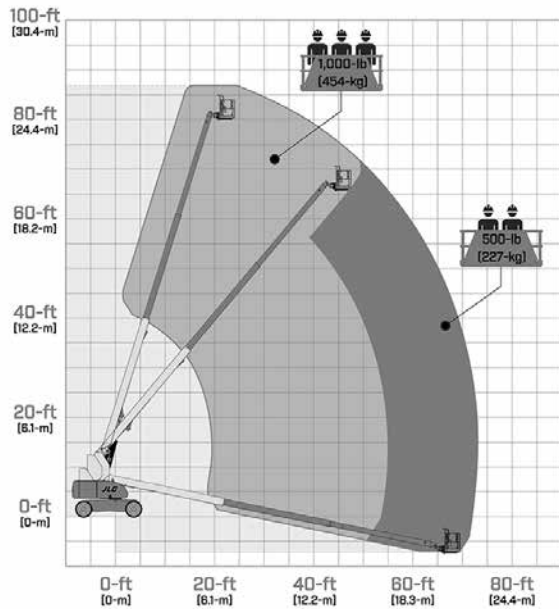
\*Certain options or country standards increase weight.

\*\*Ground bearing pressure applies to standard tires.

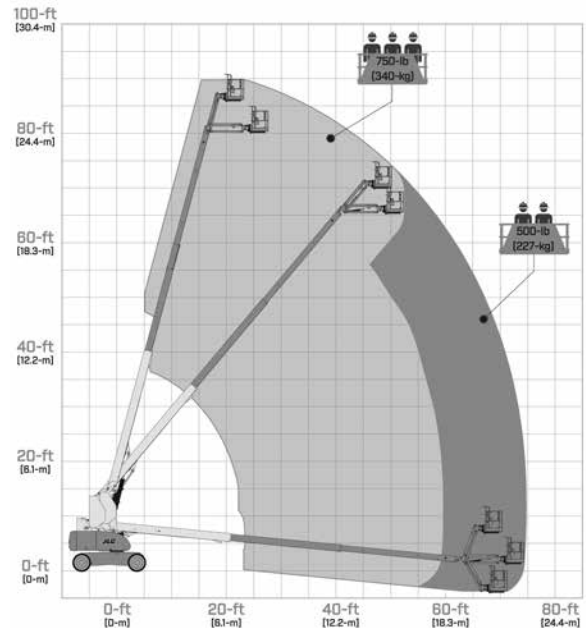
Specifications may change to meet country standards or with addition of optional equipment.

1. 500-lb capacity rated for 2 occupants plus tools/materials

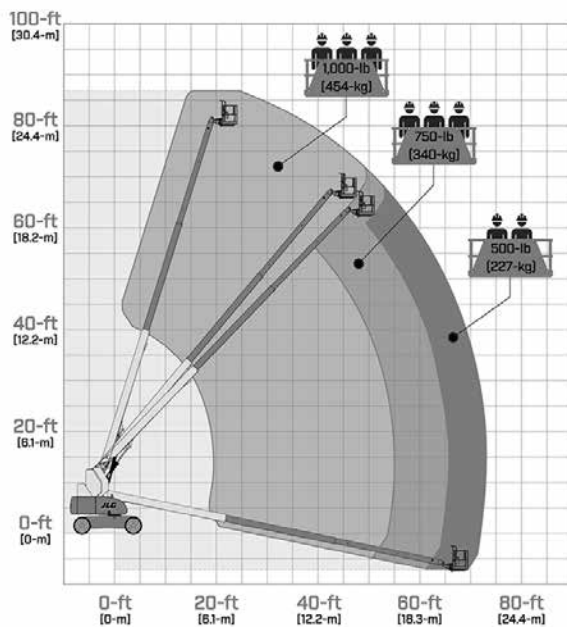
## 800S



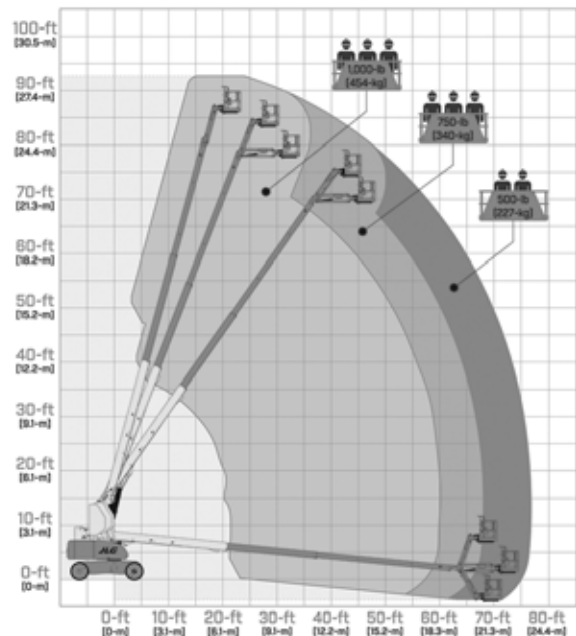
## 860SJ



## 800S HC3



## 860SJ HC3



### SPECIAL FEATURES INCLUDE:

- Improved access—A narrow fixed-width frame eliminates the need for extendable axles and allows for faster set-up.
- Optimum performance—Go from the ground to 80-ft (24.38-m) in less than 67 seconds, up to 40% faster than the competition.
- Lower operating costs—Better fuel efficiency, Control ADE (Advanced Design Electronics) system, and a swing out engine tray.
- Greater mobility—Powers through mud with 4WD, oscillating axles and a low weight.
- SkyGuard SkyLine™
- Load sensing system

**HC3**

3 Capacity Zones - Each rated for up to 3 occupants + tools/materials

# ULTRA SERIES

## Telescopic Boom Lifts

	<b>1200SJP</b>	<b>1350SJP</b>	<b>1500SJ</b>	<b>1850SJ</b>
Platform Height	120-ft / 36.58-m	135-ft 41.15-m	150-ft / 45.7-m	185-ft 7-in / 56.56-m
Horizontal Outreach	75-ft / 22.86-m	80-ft / 24.38-m	80-ft / 24.38-m	80-ft / 24.38-m
Up and Over Height	-	-	-	-
Swing	360 Degrees Continuous	360 Degrees Continuous	360 Degrees Continuous	360 Degrees Continuous
Platform Capacity-Unrestricted	500-lb / 227-kg	500-lb / 227-kg	500-lb / 227-kg	500-lb / 227-kg
Platform Capacity-Restricted	1,000-lb / 454-kg	1,000-lb / 454-kg	1,000-lb / 454-kg	1,000-lb / 454-kg
Platform Rotator	180 Degrees	180 Degrees	180 Degrees	173 Degrees
Jib Length (Range of Articulation)	8-ft / 2.44-m / 130 Degrees (+75,-55)	8-ft / 2.44-m / 130 Degrees (+75,-55)	Retracted 15-ft 2-in / 4.62-m Extended 25-ft / 7.62-m / 120 Degrees (+75,-45)	Retracted 13-ft / 3.96-m Extended 20-ft / 6.1-m / 120 Degrees (+75,-45)
JibPLUS <sup>†</sup>	180 Degrees Horizontal	181 Degrees Horizontal	N/A	N/A
Platform Size	36 x 96-in / 0.91 x 2.44-m	36 x 96-in / 0.91 x 2.44-m	36 x 96-in / 0.91 x 2.44-m	36 x 96-in / 0.91 x 2.44-m
Overall Width	8-ft 2-in / 2.49-m	8-ft 2-in / 2.49-m	8-ft 2-in / 2.49-m	8-ft 2-in / 2.49-m
Overall Width—Axles Extended	12-ft 6-in / 3.81-m	12-ft 6-in / 3.81-m	12-ft 6-in / 3.81-m	16-ft 6-in / 5.03-m
Tailswing	5-ft 6-in / 1.67-m	5-ft 6-in / 1.67-m	5-ft 6-in / 1.67-m	7-ft 7-in / 2.32-m
Stowed Height	10-ft / 3.05-m	10-ft / 3.05-m	10-ft / 3.05-m	10-ft / 3.05-m
Stowed Length	34-ft 11-in / 10.64-m	38-ft 11-in / 11.86-m	43-ft / 13.11-m	47-ft 9.5-in / 14.57-m
Stowed Length (Drive)	N/A	N/A	N/A	N/A
Wheelbase	12-ft 6-in / 3.81-m	12-ft 6-in / 3.81-m	12-ft 6-in / 3.81-m	17-ft 1.5-in / 5.22-m
Ground Clearance				
— Axle	12-in / 30-cm	12-in / 30-cm	12-in / 30-cm	13.5-in / 34-cm
— Chassis	25.5-in / 65-cm	25.5-in / 65-cm	25.5-in / 65-cm	16.25-in / 41-cm
Weight*	41,100-lb / 18,650-kg	44,750-lb / 20,300-kg	48,000-lb / 21,772-kg	59,900-lb / 27,170-kg
Max. Ground Bearing Pressure**	99 psi / 7.0-kg/cm <sup>2</sup>	107 psi / 7.52-kg/cm <sup>2</sup>	113 psi / 7.94-kg/cm <sup>2</sup>	119.6 psi / 8.41-kg/cm <sup>2</sup>
Drive Speed 2WD/4WD	3.25 mph / 5.2 km/h	3.25 mph / 5.2 km/h	3.0 mph / 4.8 km/h	2.8 mph / 4.5 km/h
Lift/Lower Speed	75/85 seconds	75/85 seconds	80/85 seconds	130/145 seconds
Gradeability 2WD/4WD	45%	45%	40%	40%
Tilt Cut-Out	5 Degrees	5 Degrees	4 Degrees	5 Degrees
Slope Leveling Capacity	N/A	N/A	N/A	N/A
Slope Leveling Capacity	N/A	N/A	N/A	N/A
Turning Radius (Inside) 2WS/4WS	8-ft / 2.44-m	8-ft / 2.44-m	8-ft / 2.44-m	7-ft 6.75-in / 2.30-m
Turning Radius (Outside) 2WS/4WS	19-ft 4-in / 5.89-m	19-ft 4-in / 5.89-m	19-ft 4-in / 5.89-m	21-ft 7.75-in / 6.60-m
Max Wind Speed Rating	28 mph / 12.5 m/s	28 mph / 12.5 m/s	28 mph / 12.5 m/s	28 mph / 12.5 m/s
Axle Oscillation	12-in / 30-cm	12-in / 30-cm	12-in / 30-cm	0-in / 0-cm
Crab Steer Ratio <sup>2</sup>	1:1	1:1	1:1	1:1
Tire Size/Type	445/50D710 Foam-Filled	445/50D710 Foam-Filled	445/50D710 Foam-Filled	445/50D710 Foam-Filled
Electrical System	12V DC	12V DC	12V DC	12V DC
Hydraulic Reservoir	55 gal / 208.2 L	55 gal / 208.2 L	55 gal / 208.2 L	75.1 gal / 284.2 L
Fuel Tank Capacity	31 gal / 117.35 L	31 gal / 117.35 L	31 gal / 117.35 L	45 gal / 170 L
Diesel Engine	Deutz TD2.9L4 Tier 4 Final 74.2 hp / 55.4 kW	Deutz TD2.9L4 Tier 4 Final 74.2 hp / 55.4 kW	Deutz TD2.9L4 Tier 4 Final 74.2 hp / 55.4 kW	Deutz TCD3.6L Tier IVF 99.8 hp / 74.4 kW
Dual Fuel Engine	-	-	-	-

\*Certain options or country standards increase weight.

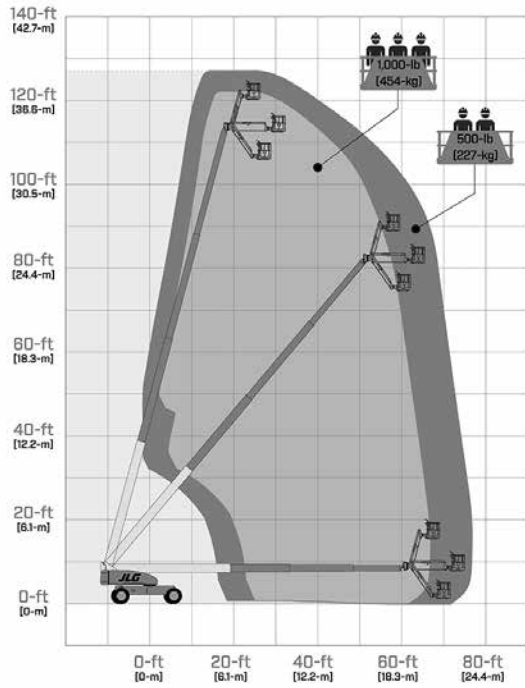
\*\*Ground bearing pressure applies to standard tires.

1. Capacity is limited to 500-lb when JibPLUS<sup>®</sup> is extended horizontally.

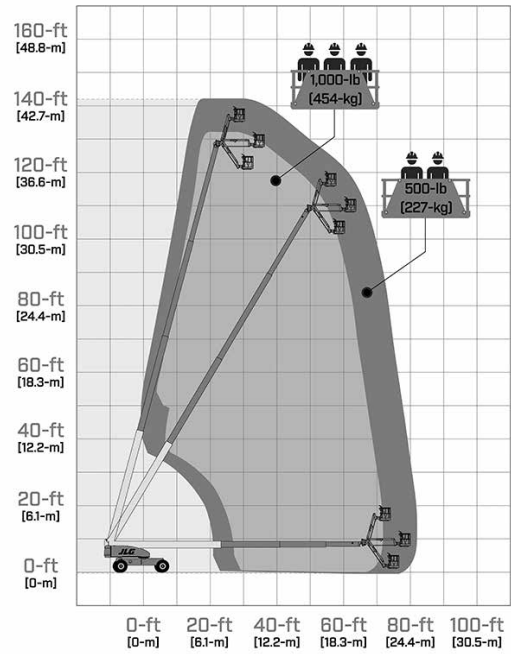
2. Ratio of forward travel to lateral travel.

Specifications may change to meet country standards or with addition of optional equipment.

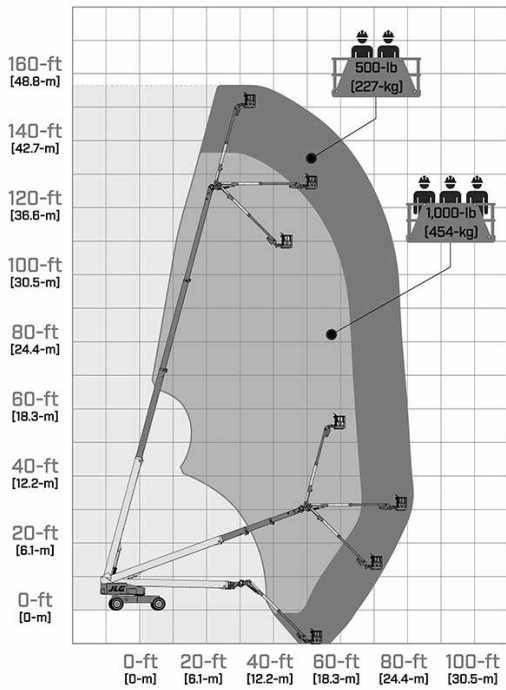
### 1200SJP



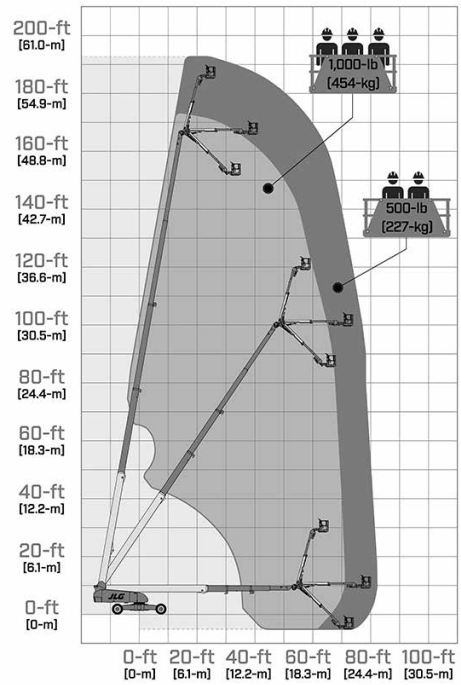
### 1350SJP



### 1500SJ



### 1850SJ



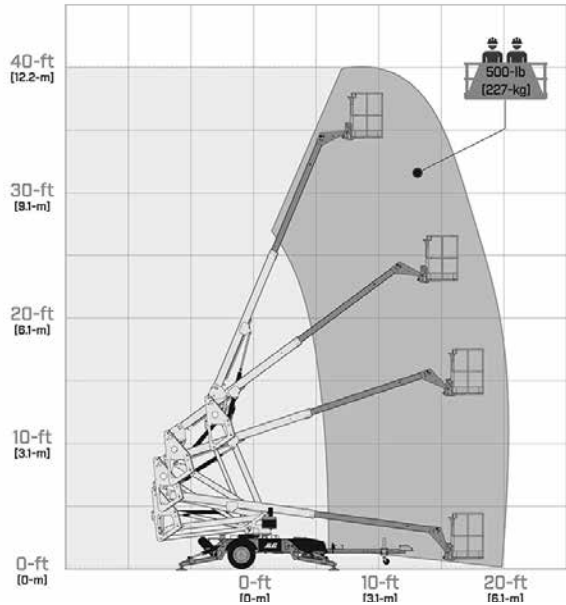
# TOW-PRO® SERIES

## Towable Boom Lifts

	<b>ET350</b>	<b>T350</b>	<b>ET500J</b>	<b>T500J</b>
Platform Height	34-ft 5-in / 10.5-m	34-ft 5-in / 10.5-m	50-ft 5-in / 15.2-m	50-ft 5-in / 15.2-m
Horizontal Outreach				
— Working Outreach	18-ft 9-in / 5.7-m	18-ft 9-in / 5.7-m	31-ft 6-in / 9.6-m	31-ft 6-in / 9.6-m
— Centerline to Platform Edge	20-ft / 6.1-m	20-ft / 6.1-m	31-ft / 9.45-m	31-ft / 9.45-m
Swing	410 Degrees Non-Continuous	410 Degrees Non-Continuous	410 Degrees Non-Continuous	410 Degrees Non-Continuous
Platform Capacity				
— Standard Platform	500-lb / 227-kg	500-lb / 227-kg	500-lb / 227-kg	500-lb / 227-kg
— Optional Platform Rotator	440-lb / 200-kg	440-lb / 200-kg	440-lb / 200-kg	440-lb / 200-kg
Material Hook Capacity	500-lb / 227-kg	500-lb / 227-kg	500-lb / 227-kg	500-lb / 227-kg
Platform Rotator (Optional)	90 Degrees Manual	90 Degrees Manual	90 Degrees Manual	90 Degrees Manual
Jib				
— Length	N/A	N/A	4-ft / 1.22-m	4-ft / 1.22-m
— Vertical Motion	N/A	N/A	130 Degrees (+75, -55)	130 Degrees (+75, -55)
Platform Size	30 x 48-in / 0.76 x 1.22-m	30 x 48-in / 0.76 x 1.22-m	30 x 48-in / 0.76 x 1.22-m	30 x 48-in / 0.76 x 1.22-m
Overall Width	5-ft 2.75-in / 1.6-m	5-ft 2.75-in / 1.6-m	5-ft 7.5-in / 1.7-m	5-ft 7.5-in / 1.7-m
Outrigger Footprint—Length	11-ft 7-in / 3.5-m	11-ft 7-in / 3.5-m	12-ft 4-in / 3.8-m	12-ft 4-in / 3.8-m
Outrigger Footprint—Width	10-ft 5-in / 3.2-m	10-ft 5-in / 3.2-m	12-ft 8-in / 3.9-m	12-ft 8-in / 3.9-m
Stowed Height	6-ft 7-in / 2.0-m	6-ft 7-in / 2.0-m	6-ft 6.75-in / 2-m	6-ft 6.75-in / 2-m
Stowed Length	21-ft 9.5-in / 6.6-m	21-ft 9.5-in / 6.6-m	27-ft 3.75-in / 8.32-m	27-ft 3.75-in / 8.32-m
Leveling Capability	11 Degrees	11 Degrees	11 Degrees	11 Degrees
Weight	3,600-lb / 1,633-kg	3,600-lb / 1,633-kg	5,200-lb / 2,359-kg	5,200-lb / 2,359-kg
Max. Ground Bearing Pressure	23 psi / 1.62-kg/cm2	23 psi / 1.62-kg/cm2	31 psi / 2.18-kg/cm2	31 psi / 2.18-kg/cm2
Max Wind Speed Rating	28 mph / 12.5 m/s	28 mph / 12.5 m/s	28 mph / 12.5 m/s	28 mph / 12.5 m/s
Towing Speed Rating	65 mph / 105 Km/h	65 mph / 105 Km/h	65 mph / 105 Km/h	65 mph / 105 Km/h
Max Gradability	20%	20%	20%	20%
Tongue Weight	250-lb / 114-kg	250-lb / 114-kg	450-lb / 204-kg	450-lb / 204-kg
Brakes	Hydraulic Surge	Hydraulic Surge	Hydraulic Surge	Hydraulic Surge
Parking Brakes	Standard	Standard	Standard	Standard
Tire Size/Type	ST215/75 R14 Pneumatic	ST215/75 R14 Pneumatic	ST225/75 R15 Pneumatic	ST225/75 R15 Pneumatic
DC Power	24V DC	24V DC	24V DC	24V DC
Batteries	4 x 6V, 220 amp-hr	N/A	4 x 6V, 220 amp-hr	N/A
Gasoline Engine	N/A	Honda GX 270—8.4 hp	N/A	Honda GX 270—8.4 hp
Fuel Tank Capacity	N/A	1.6 gal / 6.1 L	N/A	1.6 gal / 6.1 L
Hydraulic Reservoir	4.0 gal / 15.14 L	4.0 gal / 15.14 L	6.0 gal / 22.71 L	6.0 gal / 22.71 L



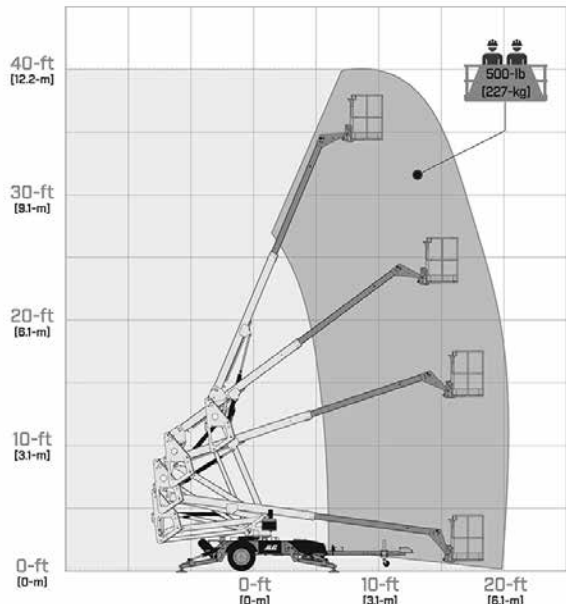
### ET350



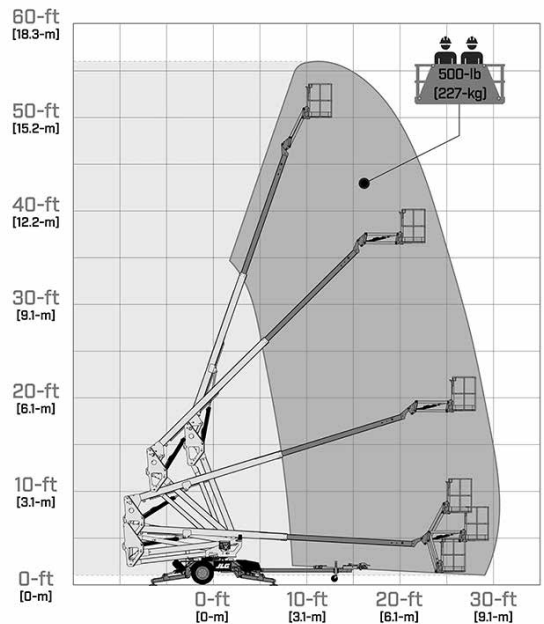
### ET500J



### T350



### T500J



# Featured Platform Accessories



## SKYPOWER® PACKAGE

JLG delivers more power where you need it with the SkyPower® Package. Machines with the SkyPower® Package include a self-contained 7500W generator with a power cable. A side-entry platform provides improved entry and allows for quick installation of the SkyGlazier® panel tray. These features combine to provide the power for hand tools and many add-on JLG accessory packages including SkyWelder® and the SkyGlazier® packages. Fits select boom and scissor models.



## SKYGLAZIER® PACKAGE

The first and only factory-approved glass and panel tray. Utilizes industry-leading JLG capacity to get materials to the work site. Improves productivity and reduces operator fatigue, while protecting panels from damage. Fits select boom models.



## SKYWELDER® PACKAGE

A 280 amp Miller® CST™ 280 is tucked into the SkyPower® boom platform. Conserves space and provides stick and TIG capability. Helps eliminate potentially dangerous leads hanging over the rails and the unnecessary cost of a stand-alone welder and power supply. Flux core wire feed capability available — see Miller® Electric Mfg. Co. recommendations. Other convenient features are also available. Fits select boom, RT and LRT scissor models.



## PIPE RACK – BOOMS

Pipe racks provide a means for factory-approved storage of pipe or conduit inside the platform to help prevent rail damage and optimize platform utility. Pipe racks reduce clutter and optimize available platform capacity. Fits select boom models.

# Featured Platform Accessories



## SOFT TOUCH SYSTEM

A padding kit is mounted to the platform guardrails and to a frame suspended below the platform. Proximity sensors deactivate platform functions when the padded framework contacts an adjacent structure. An override button permits "undoing." Fits select boom and scissor models.



## PANEL CARRIER

Optimize usable platform space by storing drywall or other panels outside of the platform. (100-lb capacity on 32-in wide ES models; 200-lb capacity on 46-in wide ES models). Fits select scissor models.



## LARGE MATERIAL RACK

The large material rack is designed to help operators position items such as pipes, HVAC, dry-wall and other construction materials into place. This is available on the LRT models and has a max capacity of rack is 860-lb. Machine capacity varies depending on model, two operators are allowed to work when using the material rack. Fits select scissor models.



## PIPE/CONDUIT RACKS – SCISSORS

Free up platform space and reduce trip hazards by storing pipe or conduit outside of the platform in the optimal lifting position for the installer. Fits select scissor models. Note: 100-lb capacity on 32-in wide ES models; 200-lb, capacity on 46-in wide ES models; 570-lb capacity on 330LRT and 430LRT.

# Connected Technologies



## AUGMENTED REALITY APP

JLG's Augmented Reality (AR) App uses next-generation visualization to enable faster and more accurate project planning and onsite equipment management. With a suite of tools such as machine and accessory visualization, virtual controls viewer and annual inspection assistant, the AR App offers a holistic solution to make your workday run smoother.

Visit the [App Store](#)® or [Google Play](#)® store to download the **JLG® Augmented Reality App**.



## MOBILE CONTROL APP

JLG's Mobile Control App allows users to operate and monitor machine diagnostics from a smart device. Four tools are included in the Mobile Control App: Remote Scissor Drive, Advanced Battery Monitoring System, Bluetooth Analyzer and Bluetooth Analyzer Reader.

\*Available Standard on AE1932 only.

Visit the [App Store](#) or [Google Play](#) store to download the **JLG® Mobile Control App**.



## CLEARSKY SMART FLEET™

ClearSky Smart Fleet is the industry's first two-way fleet management and communications platform that turns connectivity into interactivity. Standard connectivity includes telematics plus 25 additional interactivity features through a breakthrough mobile application, all-new portal, and an available API data feed. Features like Find My Machine, auto-generated Site Networks, Bluetooth Analyzer and Analyzer Reader, turn yesterday's one-way connectivity into two-way fleet interactivity. With the suite of ClearSky Smart Fleet features you'll have everything you need to set new benchmarks of productivity, uptime, and profitability.

By integrating ClearSky Smart Fleet™ into JLG's Online Express service, you can manage your fleet, troubleshoot, order parts — everything you need to keep your fleet in top shape — with a single login.



The JLG™ apps can be downloaded from the [App Store](#)® or [Google Play](#)® store. App Store and iPhone are registered trademarks of Apple Inc. Google Play is a registered trademark of Google LLC. App availability is based upon where iOS and Google Play are available. Language availability is based on what is available via the App Store and Google Play. Compatible with most iPhone/Android phones and newer iPads (5th generation and Pros).



VISIT ONLINE EXPRESS

JLG® Online Express – your one-stop-shop for all your parts needs. The right accessories for the job at hand. The maintenance staples you count on. Tens of thousands of replacement parts, many of which ship the same day. Parts to service competitive machines. All with an easy-to-use interface and streamlined checkout process.

And Online Express is much more than just a parts warehouse. It's fully loaded with tools to help you find the right parts for the right machine – quickly and with confidence. From our interactive manuals to troubleshooting tools, we're enabling you to get what you need, when you need it.

Online Express is the easy choice to keep your fleet on the job and running at peak performance.

## PARTS OFFERING



### JLG® GENUINE

When replacement parts are needed, look no further than JLG® Genuine Parts. This line of aftermarket parts is thoroughly tested by our engineers to ensure that the parts meet original specs and quality. JLG Genuine parts can also help maximize the resale value of your equipment.



### MAXQUIP™

Is your fleet comprised of more than just JLG machines? Our MaxQuip™ line of aftermarket parts is designed to support full fleet management. With parts available for OEMs like Genie®, JCB® and Skyjack®, the MaxQuip line offers unparalleled convenience — no matter what your equipment mix might look like.



### JLG® REMAN

If you've got older equipment, our line of remanufactured parts, JLG® Reman, is ideal for your aftermarket parts needs. Reman parts meet the original factory specifications, offer significant cost savings over new, and come with a one-year warranty. We even offer remanufactured parts for other OEMs through our MaxQuip® Reman line.

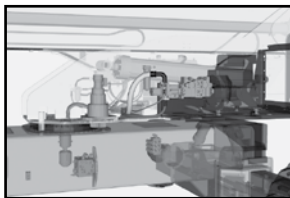
## NEW TOOLS AND FEATURES



### KNOWLEDGE BASE

With the new Knowledge Base feature, you can find solutions to common machine problems and more:

- Easily search by fault codes and symptoms
- Access information on your mobile device
- Rate articles on helpfulness



### 3-D SCHEMATICS

These innovated 3-D Schematics help you diagnose hydraulic issues and then quickly find and order parts online. The 3-D Schematics are:

- For booms, scissors, and telehandlers
- Fully interactive with rotation controls
- Color-coded and easy to use

# Safety Enhancement Accessories



SHOP NOW



## SKYSENSE® ENHANCED DETECTION SYSTEM

Provide your operators with an added level of awareness as they elevate and/or drive boom or scissor lifts equipped with SkySense®. Using strategically placed object detection sensors, SkySense not only alerts operators of objects in their path, but also halts machine motion when obstructions are present.



## BOLT-ON FALL ARREST SYSTEM

Help your operators move freely and more safely while working outside of the platform with Bolt-On Fall Arrest. This system uses a cable that allows operators to keep their safety harness tethered when exiting the platform. When productivity and safety meet, it's a win-win for everyone!



## TELEHANDLER BACK-UP CAMERA

Equip your telehandler operators with a back-up camera to provide an additional view directly behind the machine and increase awareness of people and/or objects in their path. The telehandler back-up camera also magnifies sounds for an added layer of object detection awareness.

# Tires & Tracks



## SOLID BOSS®

Improve your operators' ride and comfort with Solid Boss® Tires from JLG. These tires are non-marking, heavy duty, and resistant to "chunking" which make them ideal for telehandlers on all types of jobsites. Long-lasting tires reduce downtime and allow you to keep the project moving forward.



## MAXTRAX™

Superior design, increased durability and precision fit make MaxTrax rubber tracks ideal for your jobsite. Designed with compact loader and mini excavator fleets in mind, MaxTrax offers great pricing, convenient ordering and undeniable quality.



## QUAD TRACKS

When you need to decide between a tracked or wheeled boom lift, Quad Tracks is the solution for you! Offering the benefit of both continuous tracks and wheels, Quad Tracks give 600S and 660SJ operators excellent floatation, minimal rutting and improved traction.



SHOP NOW

## Maintenance Supplies



### DIESEL EXHAUST FLUID

Most Tier IV Final Engines 75hp and above require Diesel Exhaust Fluid (DEF), which is a product that is used to meet emission regulations for diesel vehicles. Need a little or a lot? JLG offers DEF in bulk as well as package sizes from 2.5 gallons to 330 gallon totes. We also offer a full line of lubrication equipment for DEF and other fluid storage. Sign up for Bulk DEF ordering at Online Express by typing DEF in the search box.



### FILTER KITS

Filter replacement is one of the most critical maintenance practices to keep fleets running smoothly. Convenient filter kits, which include everything from air and hydraulic filters to oil and fuel filters are available to simplify filter replacement on your equipment. Stock up and keep your fleet running smoothly!



### CHEMICALS & SUPPLIES

JLG offers a full service chemical program that offers quality products at a competitive price. Our offering of greases, lubes, protectants and cleaners are ideal for your service trucks, retail showrooms and shop floors. Proper vehicle maintenance translates to increased reliability and more uptime for your fleet.



### DECAL KITS

JLG® offers convenient, production-quality decal kits for booms, scissors, telehandlers and more. Our kits make ordering the correct decals for your machines simple and are ideal for reconditioning equipment. Find decals for your machine, platform or the control box all in one place.



# Training

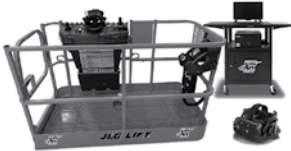


LEARN MORE



## JLG TRAINING OPTIONS

Train your staff, maintain ANSI compliance or offer onsite training for your customer with training options from JLG. Whether it's your staff that needs operator or service training or you want to offer operator or supervisor training to your customer, JLG has courses for all of your needs. Between our qualified, nationwide JLG Training Network and our industry-leading training team, we offer flexible course options for online and/or in-person training.



## TRAIN THE TRAINER

Become a part of the industry-leading professional JLG Trainer Network and get all the tools you need to train new machine operators. We'll provide the world-class training and all the materials you need to help you create a lucrative and productive training business or support the training needs within your company.



Grow your fleet and create a new source of revenue for you and your customers. Our funding partnerships, subsidized retail programs, and competitive interest rates help you drive more profit and manage your rental inventory efficiently.



SCAN ME

## RENTAL FLEET FINANCING HIGHLIGHTS:

- Up to 100% financing for all models, new, reconditioned or used JLG Equipment
- Competitive financing at competitive rates
- Quick and easy credit approvals
- Flexible structures customized to meet your business needs, including upfront skips, balloons, seasonal payments and more

## RETAIL FINANCING HIGHLIGHTS FOR YOUR CUSTOMER:

- Any make or model, new or used will qualify
- Financing starts at as little as \$3k, with no maximum
- Rapid response time (2-hour credit decision)
- Industry-leading approval percentage