

600SJP SERIES

ELECTRIC/HYBRID BOOM LIFTS

JLG
reachingout™

Performance

Platform Height EC/H600SJP	18.36 m
Horizontal Outreach EC/H600SJP	13.11 m
Swing (Non-Continuous)	400°
Platform Capacity	230 kg
Platform Rotator (Hydraulic)	180°
Weight EC/H600SJP	7,705 kg
Jib - Range of Rotation EC/H600SJP	180°
Jib - Range of Articulation EC/H600SJP	145° (+89°/-56°)
Drive Speed EC/H600SJP	4.8 km/h
Gradeability	
2WD	30%
4WD	45%
Inside Turning Radius EC/H600SJP	1.23 m
Outside Turning Radius EC/H600SJP	4.65 m

Standard Specifications

Power Source

Electrical System	48V DC
Batteries	8 x 6V, 415 AH
Drive Motors	Dual Electric Traction - Brushless AC
Generator Set (H Models)	
Diesel Engine Kubota 45 amp	4.99 kW
Fuel Tank Capacity	49.21 L

Hydraulic System

Capacity	56.78 L
Motor/pump	Series Wound Motor/Gear Pump

Tyres

EC/H600SJP	36 x 14-22.5 Non-Marking Foam Filled
------------	--------------------------------------

Standard Features

- 1.83 m Vertical and Lateral Articulating Jib
- Brushless AC Motors
- Operator Tool Tray
- Inward Self-closing Self-locking Swing Gate
- Platform Console Machine Status Light Panel*
- Tilt Light and Alarm
- Hourmeter
- Battery Condition Indicator
- Lifting/Tie Down Lugs
- 400° Non-Continuous Rotation
- Removable Battery Box
- Oscillating Axle
- Manual Descent
- Automatic Traction Control (ATC)
- SCR Automatic Battery Charger
- All Motion Alarm
- Flashing Amber Beacon
- SkyGuard® Enhanced Control Panel Protection
- Cylinder Bellows



Accessories & Options

- Mesh to Mid Rail
- 1/2 in. Air Line to Platform
- Squawker/White Noise Motion Alarm
- Platform Worklights
- AC Outlet to Platform, Including ELCB

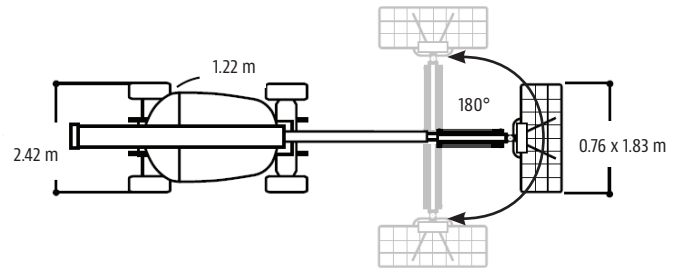
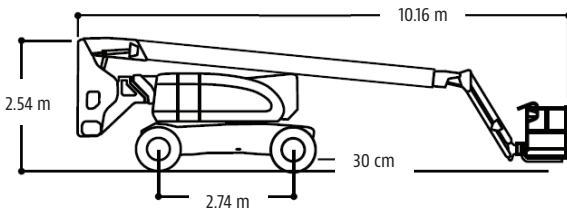
600SJP SERIES

ELECTRIC/HYBRID BOOM LIFTS

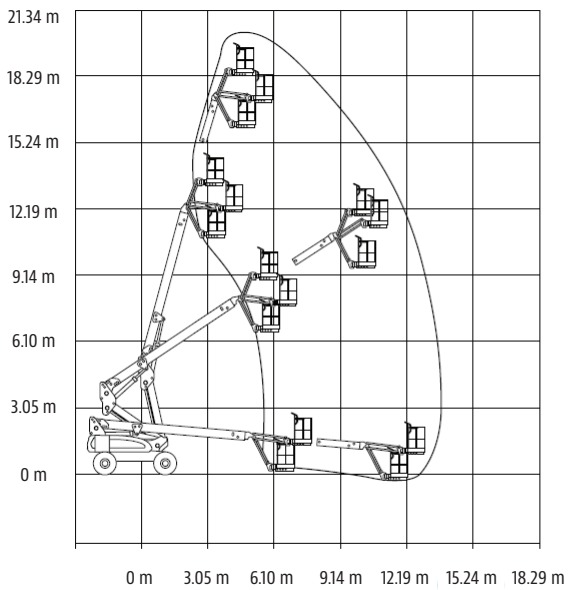


Dimensions

All dimensions are approximate.



Reach Diagrams



The JLG "1 & 5" Warranty

JLG Industries, Inc. backs its products with its exclusive "1 & 5" Warranty. We provide coverage on all products for one (1) full year and cover all specified major structural components for five (5) years. Due to continuous product improvements, we reserve the right to make specification and/ or equipment changes without prior notification. This machine meets or exceeds AS/NZS 1418.10 2011 as originally manufactured for intended applications.

Part No.: 3131116_AU
R0120_A92.20



JLG Industries (Australia)

358 Park Road
Regents Park, NSW 2143
Telephone 02 8718 6300
Fax 02 8718 6377
www.jlg.com.au

An Oshkosh Corporation Company