



KEY SPECS

Capacity
3,500-lb

Lift Height
13-ft 1-in

Travel Speed
9.3 mph / 15 km/h

Charge Time
11-12 hours (110V) / 2-3 hours (220V)
*Approximate battery charge time from 20% to 80%

KEY FEATURES

- Zero Emissions: Ideal for working in emission-free spaces, such as urban, residential, and municipal environments, along with indoor applications.
- Low Noise: Enabling work in noise sensitive environments and allows for extended working hours and overnight shifts.
- Lower Operating Cost: Reduced energy cost and less service time thanks to the maintenance-free battery and optimized service access.
- Standard Attachments and Accessories: 41-in carriage with bolt-on backrest, 48-in pallet forks, and mechanical universal skid steer coupler.

ACCESSORIES & OPTIONS

- Boom Prop
- Enclosed Cab
- Front Brick Guard
- High Aux Flow (10.5 gpm / 3045 psi)
- Hydraulic Universal Skid Steer Coupler
- Road Lights
- Wiper Package
- Work Lights

ATTACHMENTS

Pallet Forks	1.4-in x 3.9-in x 40-in	35-mm x 100-mm x 1.0-m
General Purpose Bucket	63-in	1.6-m

STANDARD FEATURES

- 2WD & 4WD Modes
- 41-in Carriage with Bolt-On Backrest
- 48-in Pallet Forks
- Auxiliary Hydraulics
- Backup Alarm
- Hourmeter
- Integrated Electronic Display
- LED Motion / Amber Beacon (CS550) with Clearsky Smart Fleet™ Hardware
- Longitudinal Stability Indication System (LSI)
- Rear Pivot Steering
- Seatbelt Engagement & Operator Assurance
- Tow Hitch
- Universal Skid Steer Coupler (Mechanical)

STANDARD SPECIFICATIONS

Performance

Rated Capacity	3,500-lb / 1,600-kg
Maximum Lift Height	13-ft 1-in / 4-m
Load at Max Height	1,800-lb / 815-kg
Maximum Forward Reach	5-ft 8-in / 1.74-m
Load at Max Reach	1,415-lb / 640-kg
Lift Speed (Boom Retracted) Up	11 sec
Lift Speed (Boom Retracted) Down	8 sec
Boom Speed Extended	7.0 sec
Boom Speed Retracted	4.6 sec
Top Travel Speed (4-Speed)	9.3 mph / 15 km/h
Drawbar Pull (Loaded)	3,966 lb-ft / 17.64 kN
Outside Turning Radius	134-in / 3.4-m
Operating Weight	7,340-lb / 3,330-kg

Power Source

Battery	48V Lithium-Ion Batteries - 6 x 3.1 kWh with integrated battery heaters
Charger	Dual On-Board Battery Chargers - 2 x 3 kW
Charging Connector	IEC60309, 230V, 32A
Charging Adapter (110V)	1.5-ft IEC60309 to NEMA 5-15P
Charging Adapter (220V)	1.5-ft IEC60309 to NEMA 6-50P
Drive	Electric Drive Motor (8.6 kW) Electric Implement Motor (15 kW)
Battery Capacity	18.6 kWh
Maximum Torque	99 lb-ft / 134 Nm

Transmission

Electric 2-Speed Transmission

Axles

High bias limited slip differential on front axle.
Planetary on front and rear axles.

Brakes

Service brakes are inboard wet disc brake on front axle.
Parking brakes are wet disc spring-applied hydraulic release.

Tires

Standard	10.0/75-15.3 Pneumatic Ag Tread Tires
Optional	10.0/75-15.3 Foam-Filled Ag Tread Tires 10-16.5 Turf Tires

Cab

- Adjustable Suspension Seat
- Certified ROPS/FOPS structure
- Horn
- Integrated Arm Rest
- Single Joystick Proportional Controls
- Rear View Mirrors

Steering 4-Wheel

Operator selectable 4-wheel circle, 4-wheel crab, 2-wheel front.

Hydraulic System-Implement

Capacity	8.72 gal / 33 L
Max. Auxiliary Flow to the Boom Head	7.6 gpm / 2610 psi

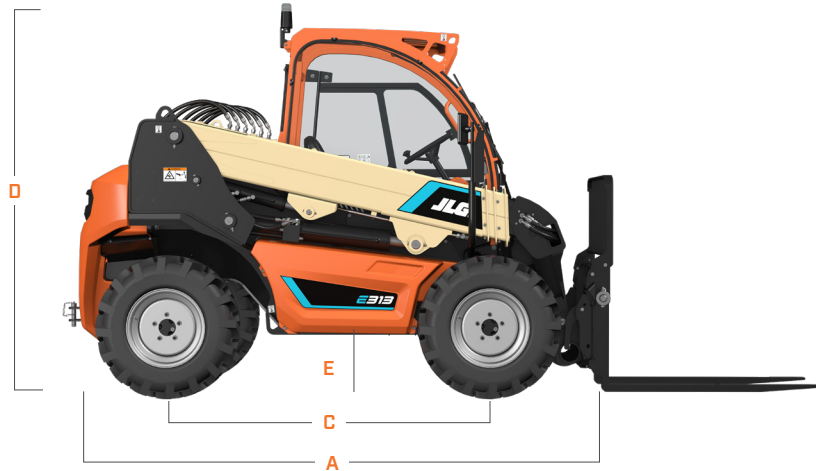
- Triple-section gear pump
- Auxiliary hydraulics used for all attachments equipped with cylinders or other hydraulic components.

DIMENSIONS

All dimensions are approximate

Dimensions

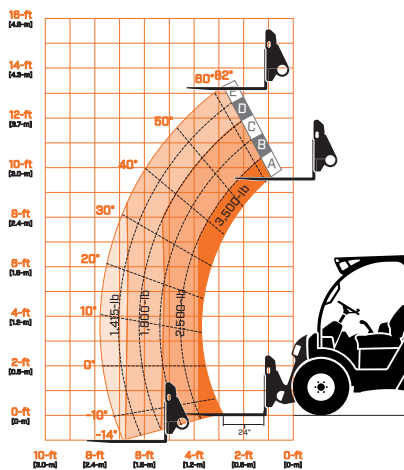
All dimensions are approximate.



- A. Machine Length 10-ft 1-in / 3.08-m
- B. Machine Width 4-ft 10-in / 1.48-m
- C. Wheelbase 5-ft 9-in / 1.75-m

- D. Machine Height 6-ft 8-in / 2.03-m
- E. Ground Clearance 10.9-in / 277-mm

LOAD CHART



We provide coverage for one (1) full year on the entire machine, two (2) full years or 2,000 hours on the drivetrain and cover all specified major structural components for five (5) years. Due to continuous product improvements, we reserve the right to make specification and/or equipment changes without prior notification.



JLG INDUSTRIES, INC.
Toll-free US 877-JLG-LIFT
JLG.com

An Oshkosh Corporation Company