

# G5-18A

## TELEHANDLER



### Performance

Rated Capacity	5,500 lb	2,495 kg
Maximum Lift Height	18 ft 4 in.	5.6 m
Load at Max Height	4,400 lb	1,996 kg
Maximum Forward Reach	10 ft 11 in.	3.3 m
Load at Max Reach	1,850 lb	839 kg
Lift Speed (boom retracted)		
Up	6.8 sec	
Down	4.6 sec	
Boom Speed		
Extended	6.7 sec	
Retracted	3.8 sec	
Top Travel Speed (4-Speed)	15 mph	25 kph
Drawbar Pull (loaded)	8,700 lb	3,946 kg
Outside Turning Radius	127 in.	3.2 m
Operating Weight	11,000 lb	4,990 kg

### Standard Specifications

#### Engine

Make and Model	Deutz TD 2.9 L4	
No. of Cylinders	4	
Displacement	177 cu in.	2.9 L
Gross Power Basic	74 hp	55 kW
Maximum Torque @ 1800 rpm	192 lb-ft	260 Nm
Fuel Tank Capacity	24 gal	91 L

#### Transmission

Hydrostatic

#### Axles

High bias limited slip differential on front axle.

Planetary on front and rear axles.

#### Brakes

Service brakes are inboard wet disc brake on front axle.

Parking brakes are wet disc spring-applied hydraulic release.

#### Tires

Standard	12 x 16.5 Pneumatic
Optional	12 x 16.5 Foam-Filled
	14 x 17.5 Foam-Filled
	14 x 17.5 Pneumatic
	33 x 12 Solid

#### Cab

Certified ROPS/FOPS structure

Adjustable suspension seat

Horn

#### Steering 4-Wheel

Operator selectable 4-wheel circle, 4-wheel crab, 2-wheel front.

### Instruments

Hourmeter	Parking brake indicator
Steering mode	Travel speed
Engine coolant temperature	Engine speed
Fuel gauge	Vehicle and engine system indicators, including fault codes
Alternator gauge	

### Hydraulic System-Implement

Capacity	24 gal	91 L
----------	--------	------

- Single-section gear pump.
- Auxiliary hydraulics used for all attachments equipped with cylinders or other hydraulic components.

### Accessories & Options

- Enclosed Cab
- Battery Disconnect Switch
- Road Light Package
- Work Light Package
- Seatbelt Engagement & Operator Presence
- Reverse Sensing
- Air Shut Off Valve
- Fixed Drawbar Type Hitch
- Fenders
- Reversing Camera System
- Brick Guards
- Air Conditioning
- Block Heater
- Tilt Steering
- Boom Prop
- Universal Skid Steer Coupler (hydraulic)
- Universal Skid Steer Coupler (mechanical)
- Reversing fan
- Pre-cleaner

### Attachments

Standard Carriage	50 in.	1.3 m
Side-Tilt Carriage	48 in.	1.2 m
Side-Shift Carriage	48 in.	1.2 m
Dual Fork Positioning Carriage	48 in.	1.2 m
Pallet Forks	2 in. x 4 in. x 48 in.	51 mm x 102 mm x 1.2 m
Lumber Forks	1.5 in. x 6 in. x 60 in.	38 mm x 152 mm x 1.5 m
Cubing Forks	2 in. x 2 in. x 48 in.	51 mm x 51 mm x 1.2 m
General Purpose Bucket	73 in., 1.0 cu yd	1.85 m, 0.76 m <sup>3</sup>
Light Material Bucket	72 in., 1.7 cu yd	1.8 m, 1.29 m <sup>3</sup>
Grapple Bucket	72 in., 1.0 cu yd	1.8 m, 0.76 m <sup>3</sup>
Lifting Hook		
Fork Mounted Work Platform	8 ft. 1,000 lbs. Max Capacity	

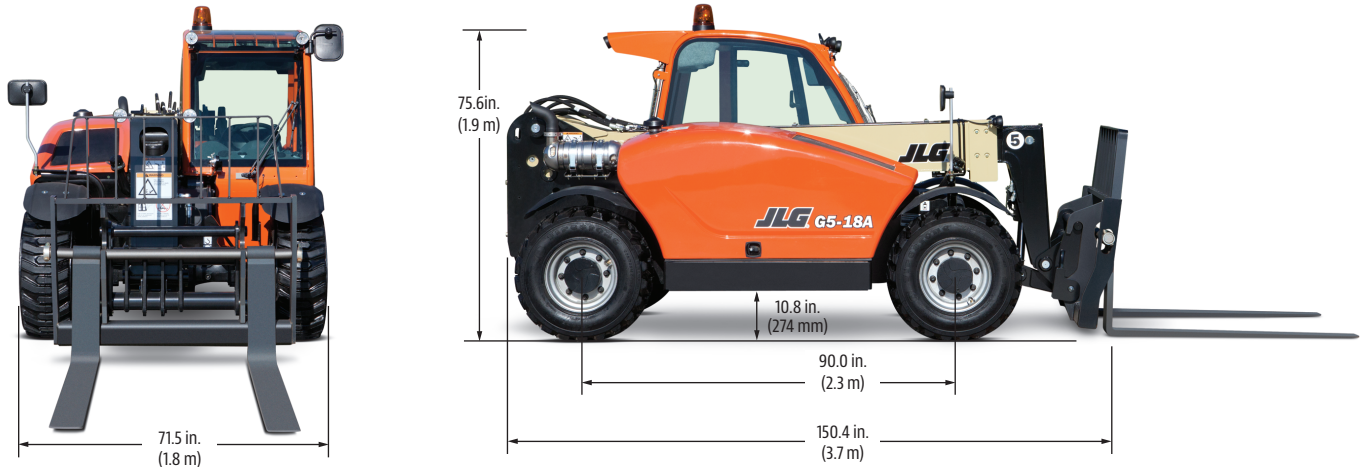
# G5-18A

TELEHANDLER

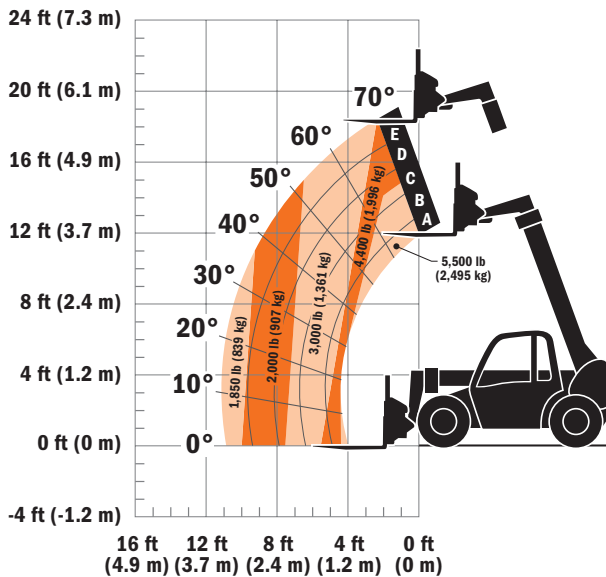
**JLG**  
reachingout™

## Dimensions

All dimensions are approximate.



## Load Chart



## The JLG "1, 2 & 5" Warranty

We provide coverage for one (1) full year on the entire machine, two (2) full years or 2,000 hours on the drivetrain and cover all specified major structural components for five (5) years. Due to continuous product improvements, we reserve the right to make specification and/or equipment changes without prior notification.

Form No.: SS-G5-18A  
Part No.: 3132221  
R021805  
Printed in USA

**JLG**

**JLG Industries, Inc.**  
1 JLG Drive  
McConnellsburg, PA 17233-9533  
Telephone 717-485-5161  
Toll-free in US 877-JLG-LIFT  
Fax 717-485-6417  
[www.jlg.com](http://www.jlg.com)

**An Oshkosh Corporation Company**