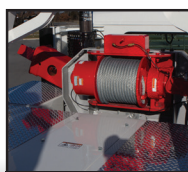




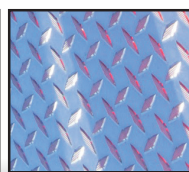
HYDRAULIC PIVOTING
RECOVERY BOOM



SELF-STOWING FLIP
DOWN CLAW/SPADE



25K/35K LB.
PLANETARY WINCH



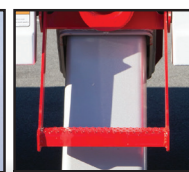
TOP OF BOX
DIAMOND DECKING



GRAB HANDLES FOR
SECURE ACCESS



STANDARD WIRELESS
REMOTE CONTROLS



SLIDE OUT STEP
FOR ACCESS

THE INDUSTRY'S BEST **ALL-AROUND RECOVERY TOOL**

Tackle the toughest jobs with the Jerr-Dan Side Recovery System. The recovery boom pivots to allow recovery from either side, and it can pull from multiple angles - side or rear.

BECAUSE THE
WORK **DEMANDS** IT.

Visit our website at Jerrdan.com
to find your nearest distributor.

FEATURES

SIDE RECOVERY SYSTEM

Capable of pulling at multiple angles – forward, sideways and rearward

STANDARD HYDRAULIC STABILIZER LEGS

Enables superior stability when performing tough side pulls

TOOLBOX (An option when SRS is ordered through Parts)

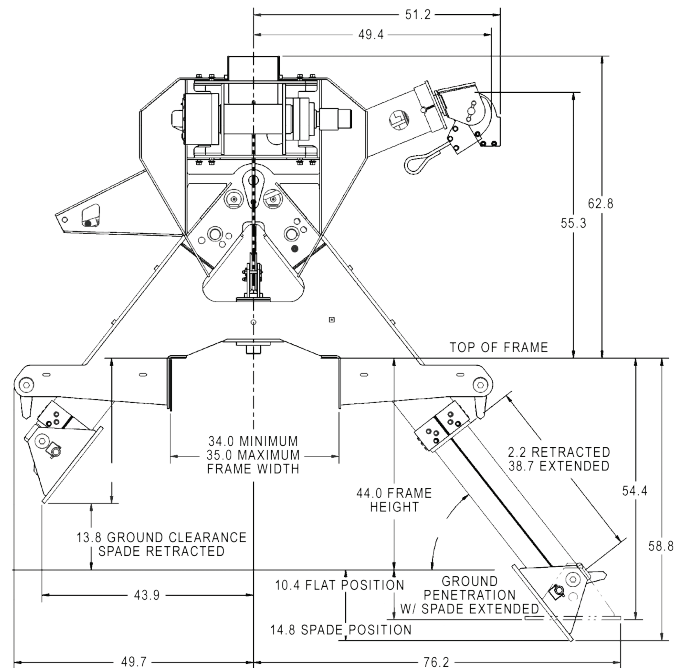
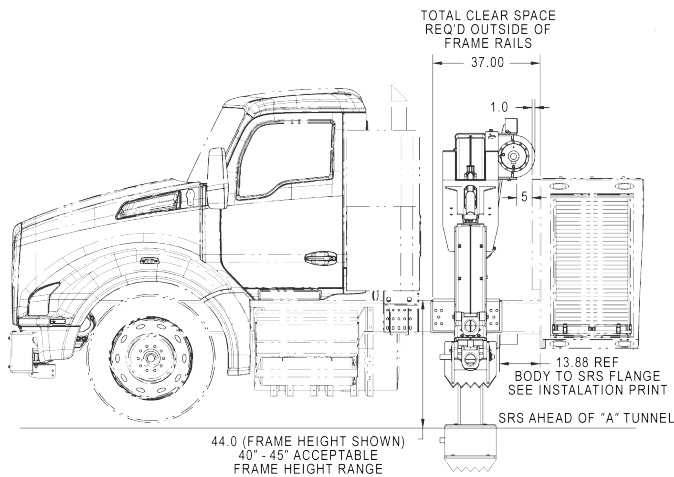
Provides additional storage, plus better fit and finish

SELF-STOWING FLIP DOWN CLAW/SPADE FOOT

Truly self-stowing claw and spade

HYDRAULIC PIVOTING RECOVERY BOOM

Enables safe, easy and efficient recovery from either side of the vehicle



STANDARD EQUIPMENT

Structure:

- Quick switch hydraulic pivoting recovery boom (no assembly required)

Winch:

- 35,000 lb. high speed planetary gear winch
- 5/8" dia x 250' or 200' length (6 x 36 IWRC RRL EIPS) galvanized winch cable with swivel hook
- Winch level wind system (patent pending)
- Adjustable air controlled winch cable tensioner
- Driver and passenger side air winch free spool release with dis-engagement indicator lights
- Removable recovery hook and galvanized shackle

Stabilizers:

- Independent hydraulic stabilizer legs
- Self-stowing flip down claw/spade

Hydraulics:

- Custom hydraulic manifold for in-line straight-forward hose routing
- Mechanical or hydraulic locking features on all functions for improved safety

Controls:

- Driver and passenger side plug-in provision for wired remote control
- Wireless non-proportional remote control system for all functions
- Manual override controls

Paint:

- Jerr-Dan black Anchor-Points
- D-rings on stabilizer outer and inner sections (2x)

Body:

- 37" width tool compartments
- Integrated pull out access step
- Interior grab handles

OPTIONAL EQUIPMENT

Miscellaneous:

- Wired non-proportional remote control system for all functions with drive and passenger side plug locations

Paint:

- Custom paint colors available

Toolbox

SPECIFICATIONS

Structural Capacity	35,000 lbs.
Winch Line Pull (first layer)	35,000 lbs. (W35S) 25,000 lbs. (W25S)
Wire Rope	5/8" dia x 250 ft. (W35S) 25,000 lbs. (W25S)
Weight	4,500 lbs.

RECOMMENDED CHASSIS REQUIREMENTS

Minimum Frame RBM (per rail)	
SRS-W35S	4,200,000 in-lbs.
SRS-W25S	3,200,000 in-lbs.
Minimum Front GAWR	
25-Ton, 30-Ton & 35-Ton Wreckers	18,000 lbs.
50-Ton & 60-Ton Wreckers	18,000 lbs.
Frame Height Range	40" - 45"
Frame Width Range	34" - 35"
Additional Cab to Axle	37"